



Evaluation & Appraisal and Update of Alachua County Comprehensive Plan: 2011-2030

Work Plan

Presentation to Health Care Advisory Board Meeting

Ken McMurry, AICP, Planner, Growth Management Department
Kathleen W. Pagan, AICP, Senior Planner, Growth Management Department

November 15, 2017

COMMUNITY HEALTH ELEMENT

Optional Element
adopted by
County Commission
2011



**Policy Overview for
identification and discussion of issues associated with
the Alachua County Comprehensive Plan
Evaluation & Appraisal and Update**



Participation in Update of County Comprehensive Plan

Work Plan for Evaluation & Appraisal & Update of
Alachua County Comprehensive Plan: 2011-2030

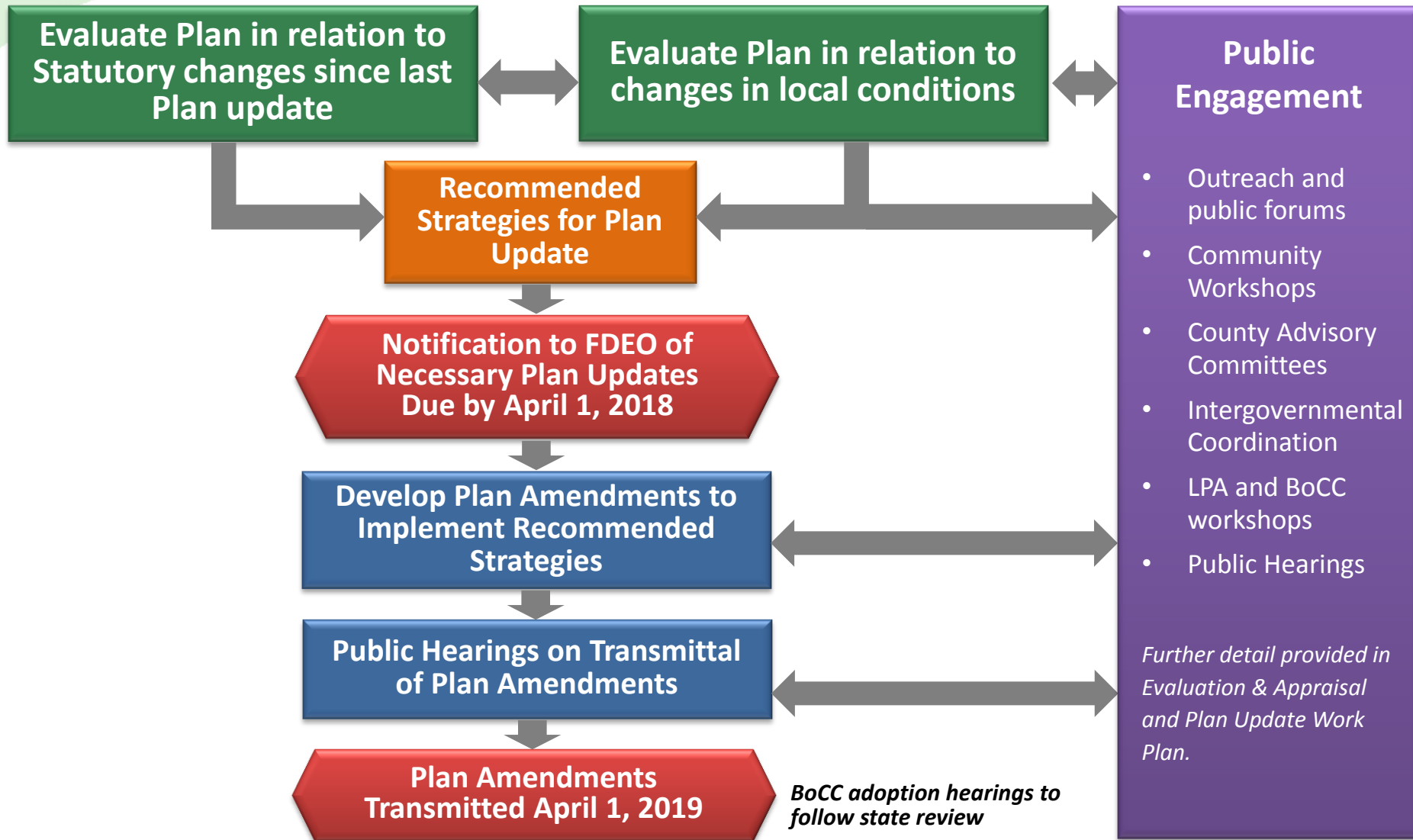
<https://growth-management.alachuacounty.us/formsdocs/Work-Plan-Comp-Plan-Update.pdf>

For info and to sign up for meeting notices see
Alachua County Growth Management website:

<https://growth-management.alachuacounty.us/planning/CompPlanUpdate>



Evaluation & Appraisal and Plan Update Process





Evaluation & Appraisal and Plan Update Timeline

04/17 | 06/17 | 08/17 | 10/17 | 12/17 | 02/18 | 04/18 | 06/18 | 08/18 | 10/18 | 12/18 | 02/19 | 04/19

Statutory Changes

Local Issues and Needs

Develop Data and Analysis

Develop Strategies for Plan Update

Notification
Letter to
State
April 1, 2018

Develop Draft
Plan Amendments

Public Hearings on
Plan Amendment
Transmittal

Plan
Amendments
Transmitted by
April 1, 2019

*BoCC adoption hearing
to follow state review*

Public Participation

Outreach

Public Engagement

Meetings & Workshops with
Advisory Committees, LPA, BoCC

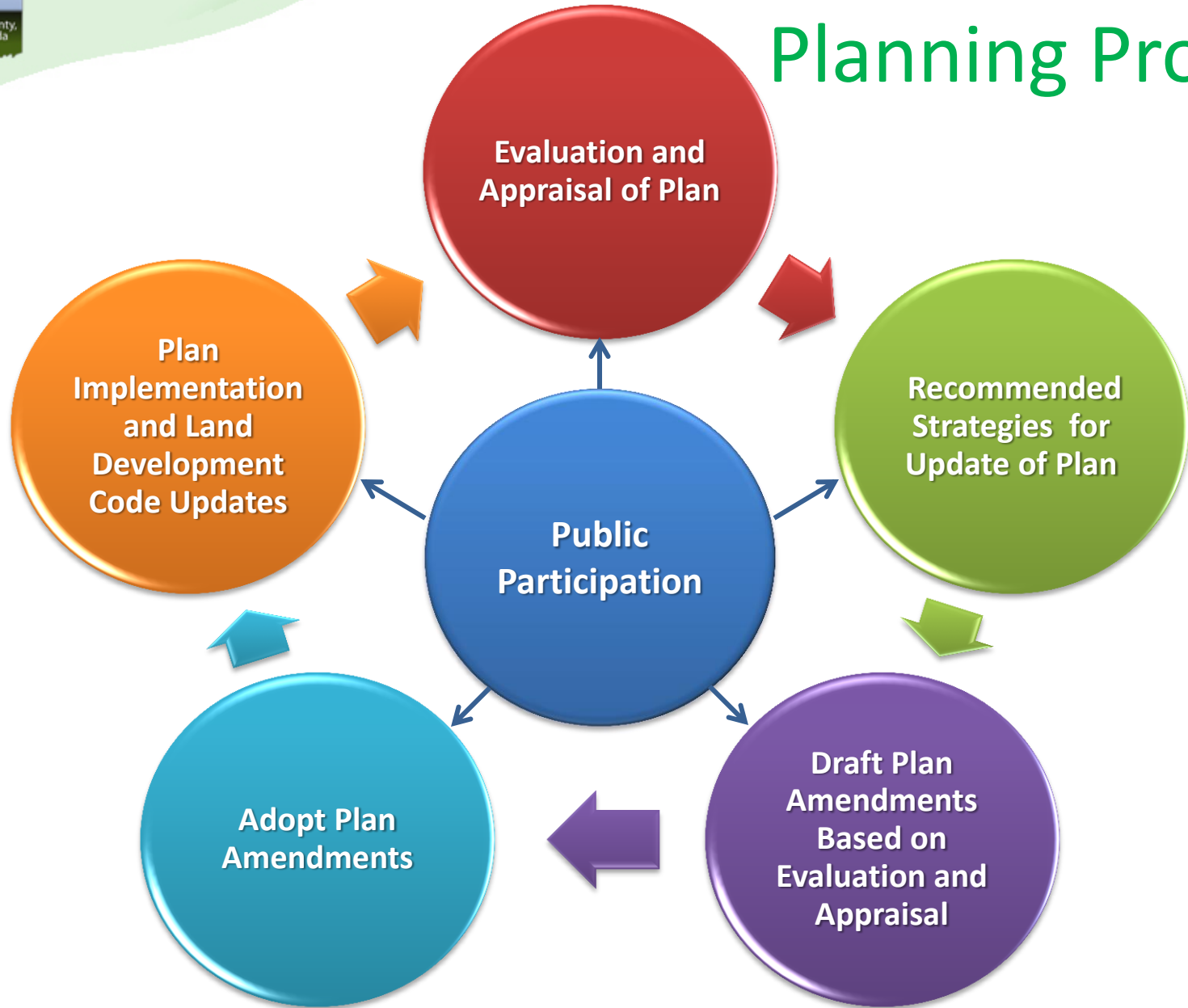


Role of the Comprehensive Plan

- Expression of the community's long-range vision
- Policy framework adopted by the Alachua County Commission for guiding local decision-making
- County's Plan addresses a broad range of topics
 - Built Environment
 - Natural Resource Protection
 - Public Facilities and Services
 - Intergovernmental Coordination
 - Energy
 - Economic Development
 - Capital Planning
 - Housing
 - Historic Resources
 - Community Health
- Data and Analysis-Based
- Development decisions must be consistent with Plan



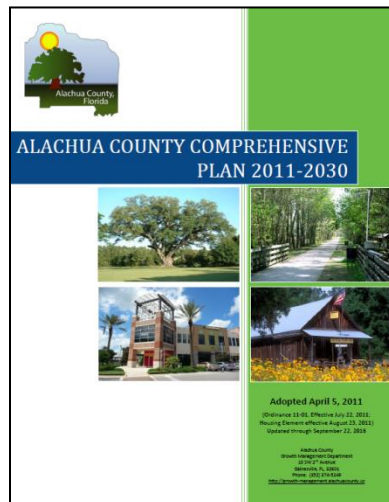
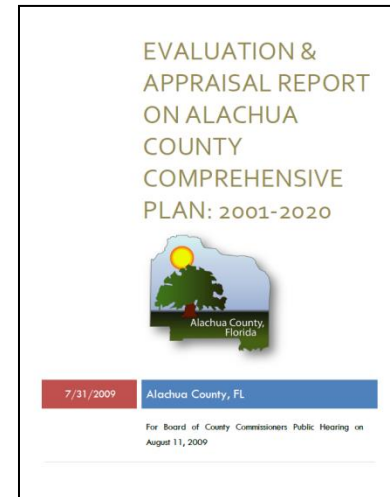
Comprehensive Planning Process





Alachua County Comprehensive Plan: 2011-2030

Last Evaluation and Appraisal
of Plan in 2008-2009



Last Plan update based on
Evaluation and Appraisal was
adopted by County Commission
in 2011

Interdepartmental Participation

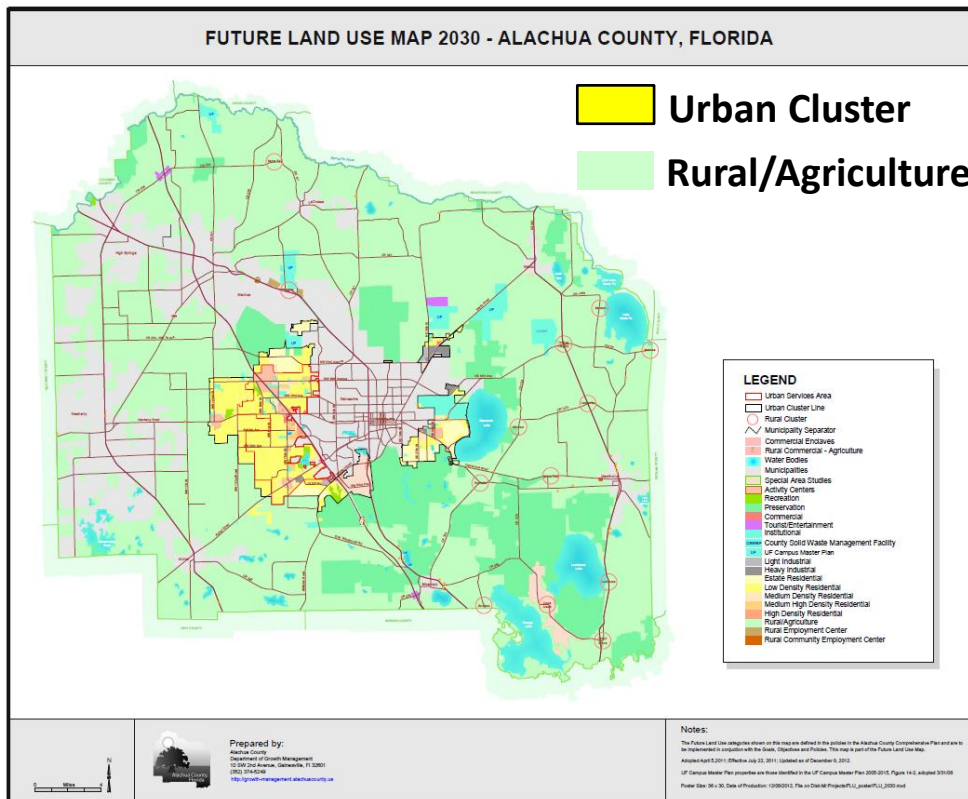




Alachua County Comprehensive Plan 15 Elements

- Future Land Use
- Transportation Mobility
- Housing
- Potable Water & Sanitary Sewer
- Solid Waste
- Stormwater Management
- Conservation & Open Space
- Recreation
- Intergovernmental Coordination
- Capital Improvements
- Economic
- Historic Preservation
- Public School Facilities
- Community Health
- Energy

Alachua County Comprehensive Plan FUTURE LAND USE MAP



- Focus urban development in Urban Cluster for efficient provision of facilities and services
- Strengthen separation of rural and urban uses
- Minimize conversion of land from rural to urban



COMMUNITY HEALTH ELEMENT

Optional Element
adopted by
County Commission
2011



ALACHUA COUNTY COMPREHENSIVE PLAN 2011-2030





Alachua County Comprehensive Plan

Community Health Element Goal

PRESERVE THE HEALTH OF ALACHUA COUNTY RESIDENTS BY FACILITATING HEALTH CARE DELIVERY, IMPROVING THE LIVABILITY OF THE COMMUNITY, AND PROVIDING ALL ALACHUA COUNTY RESIDENTS OPPORTUNITIES FOR ACTIVE LIVING.



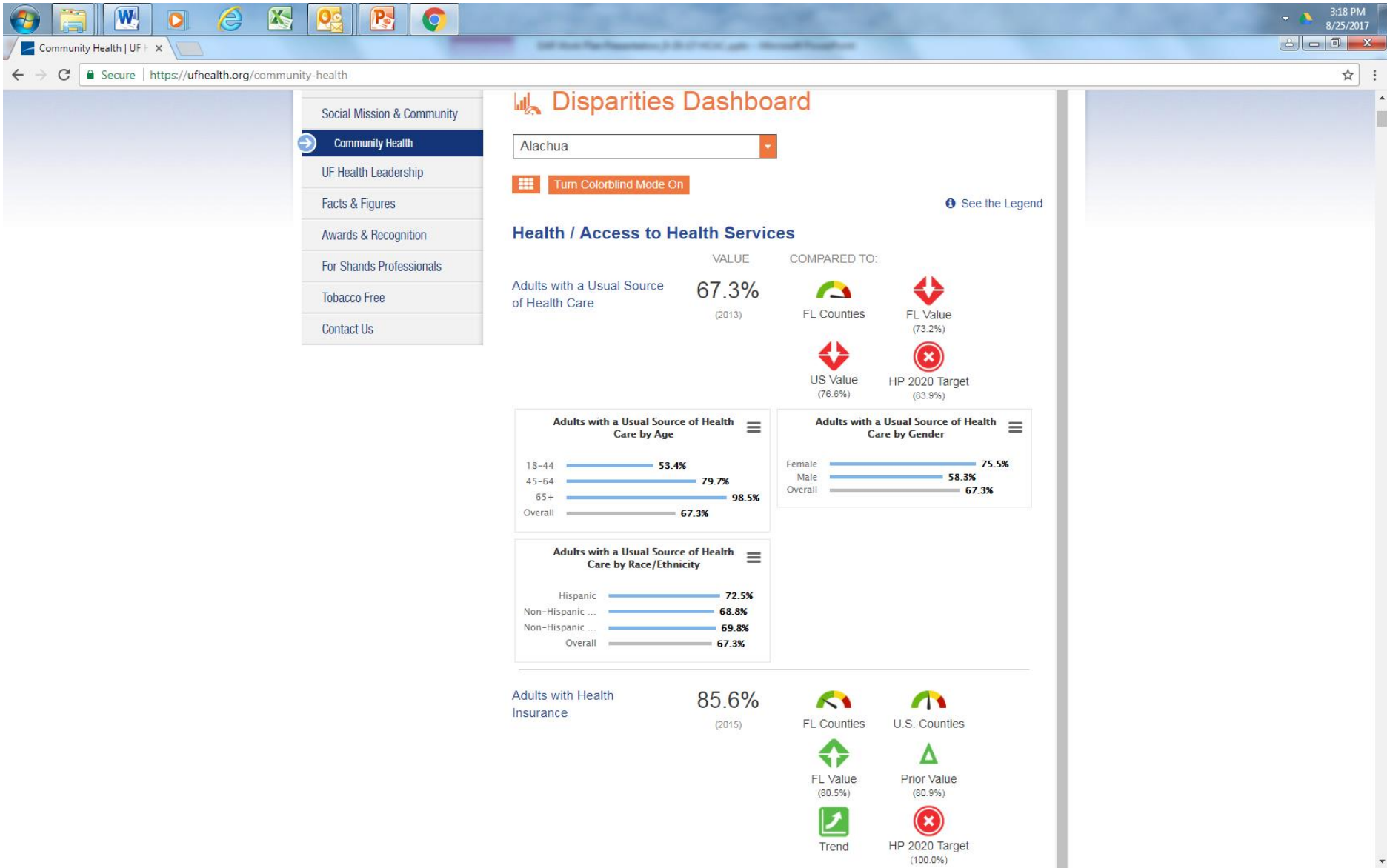


Alachua County Comprehensive Plan Community Health Element

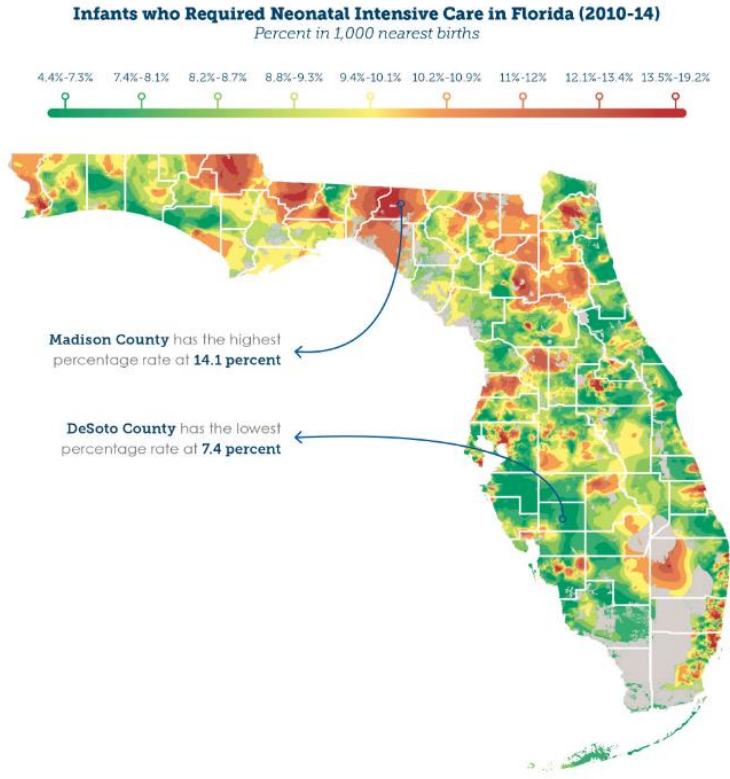
Objectives & policies linked with other elements

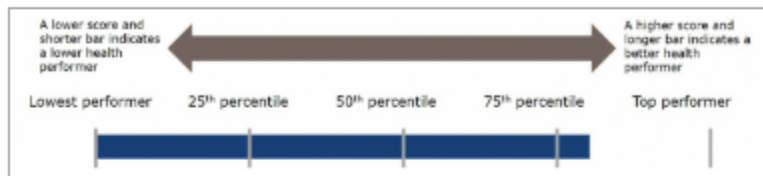
- Foster a healthy community
- Public/Private Partnerships
 - local government
 - University of Florida, Santa Fe
 - Alachua County School Board
- Prevent Chronic Illness; obesity prevention
- Improve opportunities for active living
- Monitoring, indicators of Community Health

Process to identify best available data to measure health in our communities



New county-by-county maps constructed by an ICHP research team reveal hotspots for preterm births in Florida, the leading contributor of death in infants. According to ICHP researcher Chris Delcher, PhD, 9.9 percent of children in Florida are born before 37 weeks, putting them at increased risk for developmental delays, disability and death. The counties with the highest percentages of preterm births from 2011 to 2014 included two counties in the Apalachicola area, Franklin and Jefferson, at approximately 14 percent. Check out the map of the entire state below for a more in-depth view.





Florida

Commute Mode Share – Auto Raw Value = 89.5 Score = 40



Commute Mode Share – Transit Raw Value = 2.2 Score = 48



Commute Transit Score
48

Commute Mode Share – Bicycle Raw Value = 0.7 Score = 64



Commute Mode Share – Walk Raw Value = 1.6 Score = 10



Complete Streets Policies Raw Value = Policy in place Score = 100



Complete Streets Policies Value
100

DUI/DWI Fatalities per 100,000 Residents Raw Value = 3.6 Score = 46



Person Miles of Travel by Private Vehicle Raw Value = 25,743 Score = 79



Person Miles of Travel by Walking Raw Value = 193 Score = 46



Physical Activity from Transportation Raw Value = 8.91 Score = 52



Proximity to Major Roadways Raw Value = 0.08% Score = 48



Road Traffic Fatalities per 100,000 Residents – Auto Raw Value = 10.3 Score = 48



Road Traffic Fatalities per 100,000 Residents – Bicycle Raw Value = 0.6 Score = 0



Road Traffic Fatalities per 100,000 Residents – Pedestrian Raw Value = 2.6 Score = 1



Road Traffic Fatalities Exposure Rate – Auto Raw Value = 11.5 Score = 90



Road Traffic Fatalities Exposure Rate – Bicycle Raw Value = 93.1 Score = 10



Road Traffic Fatalities Exposure Rate – Pedestrian Raw Value = 163.2 Score = 2



Seat Belt Use Raw Value = 0.87 Score = 59



Transit Trips per Capita Raw Value = 14.4 Score = 61



Use of Federal Funds for Bicycle and Pedestrian Efforts Raw Value = 3.50% Score = 95



Vehicle Miles Traveled per Capita Raw Value = 10,053 Score = 47



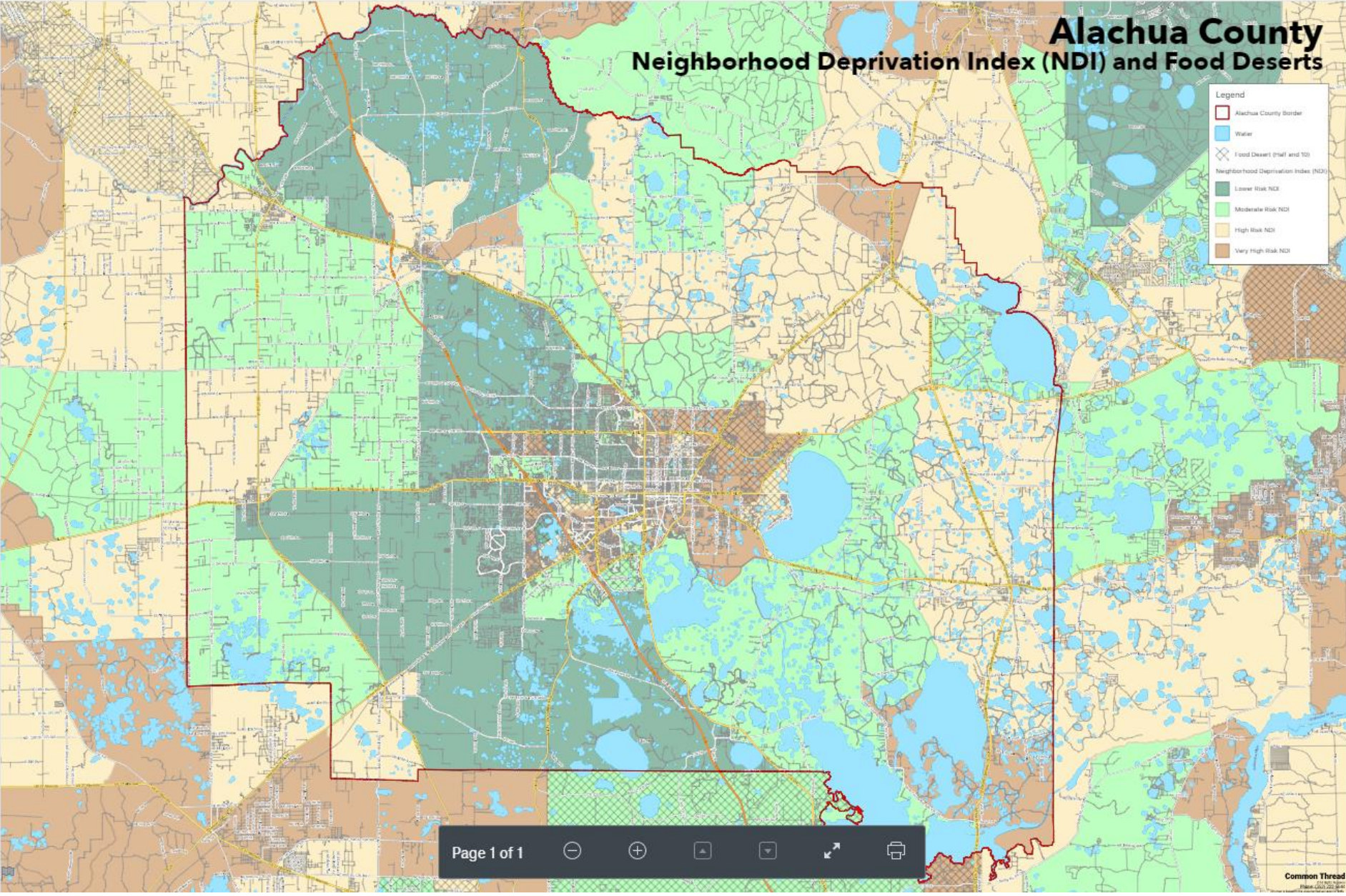
<https://www.transportation.gov/transportation-health-tool/indicators>

Develop Data and Analysis

Alachua County Neighborhood Deprivation Index (NDI) and Food Deserts

Legend

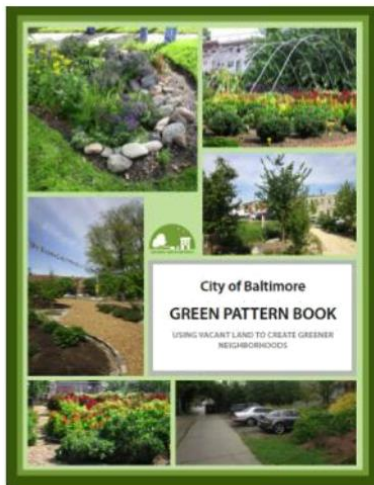
- Alachua County border
- Water
- Food Desert (HFI and TDI)
- Neighborhood Deprivation Index (NDI)
 - Lower Risk NDI
 - Moderate Risk NDI
 - High Risk NDI
 - Very High Risk NDI



Source: Spring 2017- Bruce Waite Ph.D., Common Thread, "The Food Oasis Project"

City- Greening Initiatives

Utilize the UHI data to focused on re-using vacant land to green neighborhoods, reduce stormwater runoff, grow food, and create community spaces that mitigate the negative impacts of vacant properties



Source: EPA Webinar, Understanding Your (City's) Heat Island

Identify new research on health issues

The screenshot shows a web browser window with the URL www.pewtrusts.org/en/research-and-analysis/reports/2017/08/10-policies-to-prevent-and-respond-to-childhood-lead-exposure?btn&utm_campaign=2016-09-07+HIP+-+Lead+Report&utm_medium=email&utm_source=Pew. The page header features the logo for THE PEW CHARITABLE TRUSTS, a search bar, and a menu icon. The main content area displays the report title "10 Policies to Prevent and Respond to Childhood Lead Exposure" in green, with a subtitle "An assessment of the risks communities face and key federal, state, and local solutions". A "DOWNLOADS" button with a download icon is visible. Below the title, the date "August 30, 2017" and "Health Impact Project" are listed. A "SHARE" section includes icons for Twitter, Facebook, Google+, LinkedIn, Email, and Print. A large image of a young child looking at a book is shown, with a "Shutterstock" watermark. To the right, a "Related Expert" section features a profile for Bethany Rogerson, Manager at The Pew Charitable Trusts. Below that, a "Related Resource" section lists "Lead Prevention Briefs: Ten Policies to Prevent and Respond to Childhood Lead Exposure" with a link icon. At the bottom right, there is an illustration of a neighborhood with various buildings like a hardware store, variety store, and school, with people walking and a car driving.

The Pew Charitable Trusts / Research & Analysis / 10 Policies to Prevent and Respond to Childhood Lead Exposure

REPORT

10 Policies to Prevent and Respond to Childhood Lead Exposure

DOWNLOADS

An assessment of the risks communities face and key federal, state, and local solutions

August 30, 2017 | Health Impact Project

SHARE



© Shutterstock

Related Expert

 Bethany Rogerson
Manager
The Pew Charitable Trusts

Related Resource

Lead Prevention Briefs: Ten Policies to Prevent and Respond to Childhood Lead Exposure [↗](#)





Evaluation and Appraisal State Requirements

- Each local government is required to evaluate its comprehensive plan at least every 7 years
- Florida’s “Community Planning Act” amendments adopted in 2011 simplified the Evaluation and Appraisal process and requirements (s. 163.3191, F.S.)
 - Local governments shall evaluate plans to determine if amendments are necessary to reflect **changes in state statutes** since the last update, and notify the state land planning agency.
 - Local governments are “encouraged to comprehensively evaluate and, as necessary, update comprehensive plans to reflect **changes in local conditions**” as part of the process.



Evaluation and Appraisal Schedule for Alachua County

- Alachua County must submit a letter notifying the Florida Department of Economic Opportunity (DEO) whether amendments to the Comprehensive Plan are necessary to reflect changes in state requirements no later than **April 1, 2018.**
- The County must transmit needed amendments for review by state agencies within 1 year of submittal of its notification letter (not later than April 1, 2019)



Public Engagement

- **Outreach**
 - Website
 - Email List
 - Public Comment Email Address
 - Press Releases
 - Channel 12 Content
 - County Social Media
 - Community Update Newsletter
 - Brochures
 - General & Community Newspapers
 - Community Surveys
- **Direct Engagement with Public**
 - Community Workshops
 - Stakeholder Groups
- **Local Government Meetings and Public Hearings**
 - Advisory Committees, including Alachua County Planning Commission/Local Planning Agency
 - Board of County Commissioners



Next Steps

- **Update Data and Analysis**
 - UF Health Data/ DOH websites
 - CHIP/ Health Needs Assessment
 - Other?
- **Changes in Florida Statutes**
- **Identify Local Issues to Consider**

Community Discussions

- Other County Advisory Committees
- Local Health Organizations- WellFlorida, Tobacco Free, Others?

For information contact Growth Management 352-374-5249

Kathleen Pagan, Senior Planner, kpagan@alachuacounty.us

Ken Zeichner, Principal Planner, ksz@alachuacounty.us

Ken McMurry, Planner, kmcmurry@alachuacounty.us

In Conclusion

What issues does the Committee recommend be addressed as part of the Evaluation and Appraisal of the Comprehensive Plan?