



Evaluation & Appraisal and Update of Alachua County Comprehensive Plan: 2011-2030

Work Plan

Presentation to Land Conservation Board Meeting

Ken Zeichner, AICP, Principal Planner, Growth Management Department
September 28, 2017



CONSERVATION AND OPEN SPACE ELEMENT



**Policy Overview for
identification and discussion of issues associated with
the Alachua County Comprehensive Plan
Evaluation & Appraisal and Update**

Land Conservation Board: September 28, 2017



Participation in Update of County Comprehensive Plan

Work Plan for Evaluation & Appraisal & Update of
Alachua County Comprehensive Plan: 2011-2030

<https://growth-management.alachuacounty.us/formsdocs/Work-Plan-Comp-Plan-Update.pdf>

For info and to sign up for meeting notices see
Alachua County Growth Management website:

<https://growth-management.alachuacounty.us/planning/CompPlanUpdate>



Presentation Outline

- Comprehensive Plan
- Work Plan for Evaluation & Appraisal and Comprehensive Plan Update



Role of the Comprehensive Plan

- Expression of the community's long-range vision
- Policy framework adopted by the Alachua County Commission for guiding local decision-making
- County's Plan addresses a broad range of topics
 - Built Environment
 - Natural Resource Protection
 - Public Facilities and Services
 - Intergovernmental Coordination
 - Energy
 - Economic Development
 - Capital Planning
 - Housing
 - Historic Resources
 - Community Health
- Data and Analysis-Based
- Development decisions must be consistent with Plan



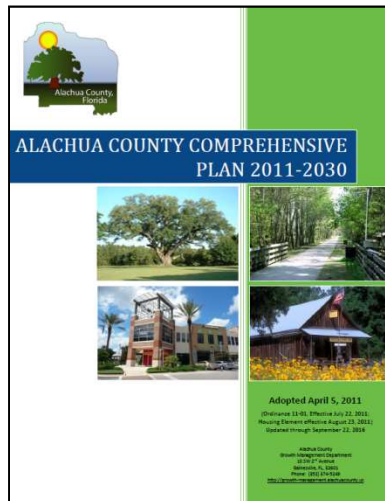
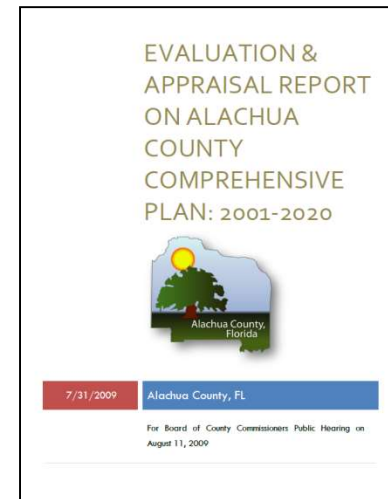
Comprehensive Planning Process





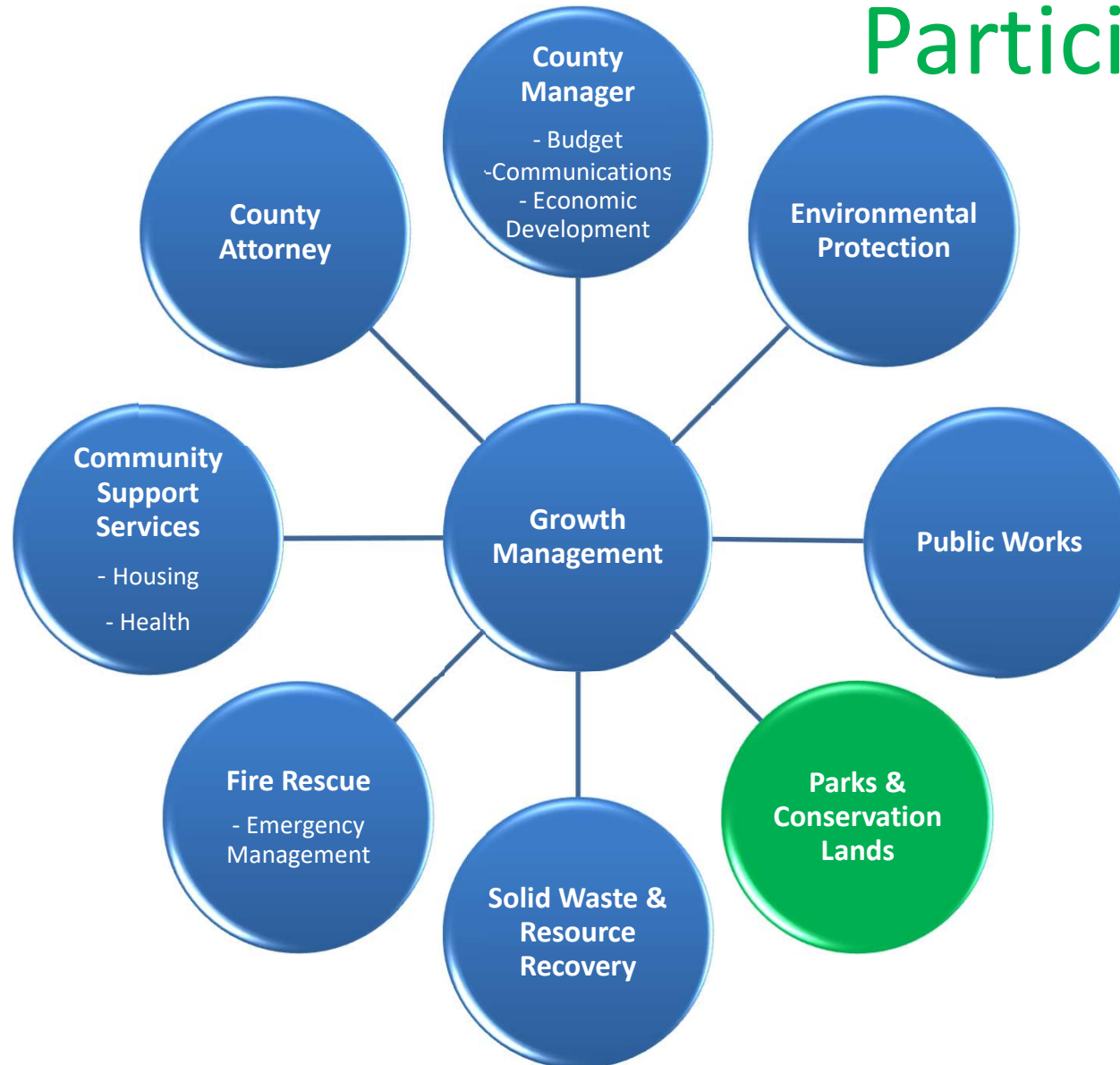
Alachua County Comprehensive Plan: 2011-2030

Last Evaluation and Appraisal
of Plan in 2008-2009



Last Plan update based on
Evaluation and Appraisal was
adopted by County Commission
in 2011

Interdepartmental Participation





Alachua County Comprehensive Plan 15 Elements

Future Land Use

Transportation Mobility

Housing

Potable Water & Sanitary Sewer

Solid Waste

Stormwater Management

Conservation & Open Space

Recreation

Intergovernmental Coordination

Capital Improvements

Economic

Historic Preservation

Public School Facilities

Community Health

Energy



[Alachua County Comprehensive Plan
2011-2030
Conservation and Open Space
Element](#)

CONSERVATION AND OPEN SPACE ELEMENT



ALACHUA COUNTY COMPREHENSIVE PLAN 2011-2030





CONSERVATION AND OPEN SPACE ELEMENT SECTION 6.0

Land Conservation Program

OBJECTIVE 6.1 - PROGRAM OVERVIEW

Establish and maintain a land conservation program for the purchase, preservation, and management of natural areas and open space to complement the regulatory approaches identified in other sections of the Conservation and Open Space Element.





CONSERVATION AND OPEN SPACE ELEMENT SECTION 6.0

Land Conservation Program

OBJECTIVES AND POLICIES

- Land conservation master plan (Objective 6.1)
- Alachua County Forever program (Objective 6.2)
- Linked open space network (Objective 6.3)
Prioritize ecologically functional linkages between core areas on the Critical Ecological Corridors Map (Policy 6.3.2)
- Other acquisition programs and tools (Objectives 6.4 & 6.5)
- Land management and stewardship (Objective 6.6)

**CONSERVATION AND OPEN SPACE ELEMENT
SECTION 6.0 (Policy 6.3.2)
Land Conservation Program**

**Critical Ecological
Corridors Map**

Legend

-  Critical Ecological Corridor
-  Preservation
-  Strategic Ecosystems
-  Municipalities
-  Water Bodies

Data Notes:

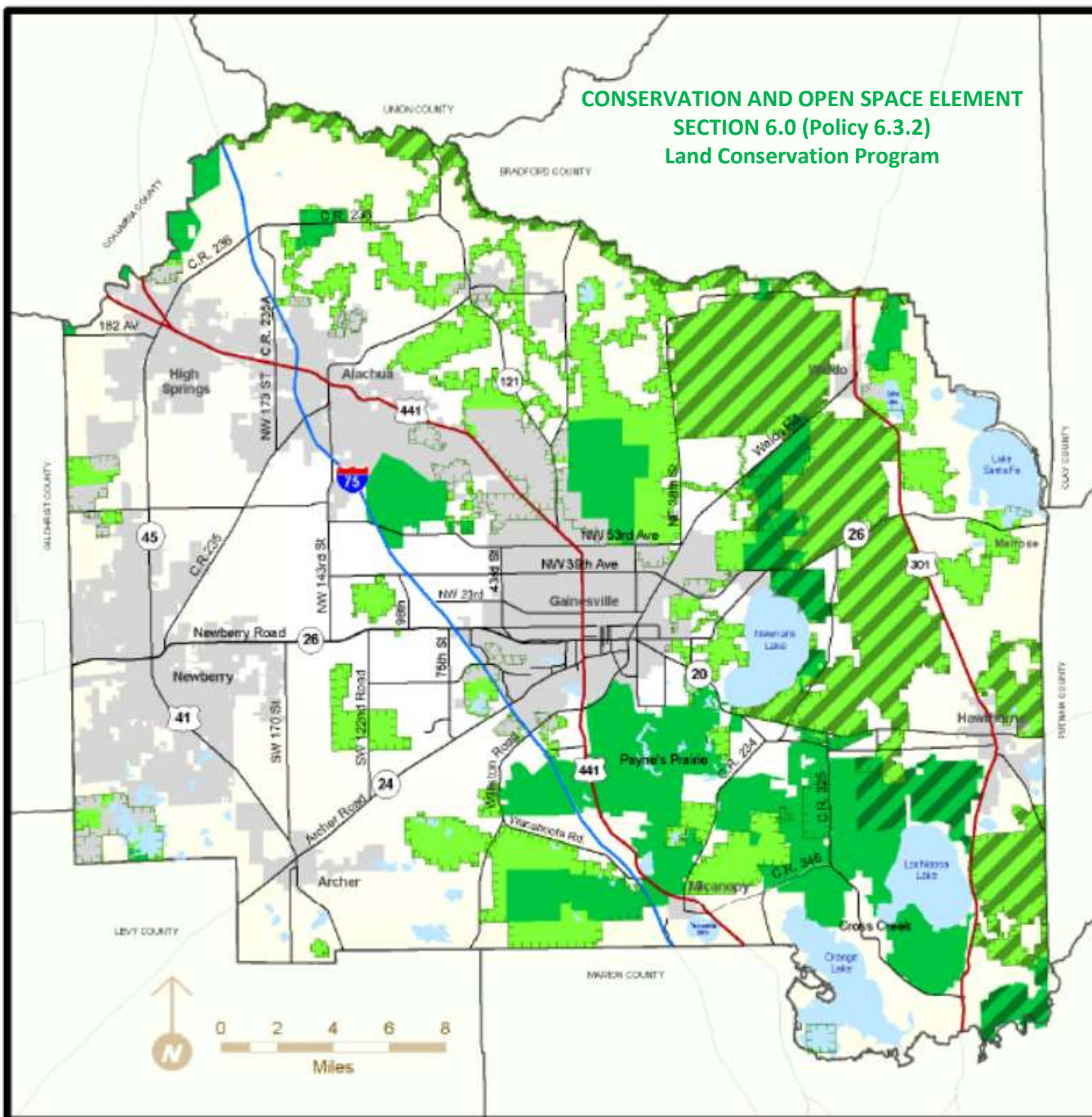
Preservation areas are from the adopted Future Land Use Map, and also includes properties recently acquired by Alachua County Forever within the Critical Ecological Corridor. Strategic Ecosystem areas are from the Strategic Ecosystems Map adopted as part of the Conservation and Open Space Element.

Adopted April 5, 2011

Prepared by:

Alachua County
Department of Growth Management
10 SW 2nd Avenue, Gainesville, FL 32601
(352) 374-5249

<http://growth-management.alachuacounty.us/>



STRATEGIC ECOSYSTEMS, Alachua County, Florida

Legend

-  Strategic Ecosystems
-  Municipalities
-  Preservation-Future Land Use
-  Water Bodies

Source:

KBN/Golder Associates. 1996. "Ecological Inventory of Alachua County, Florida." Report prepared for the Alachua County Department of Growth Management by KBN/Golder Associates.

Meta-data:

Referenced Report.

Notes:

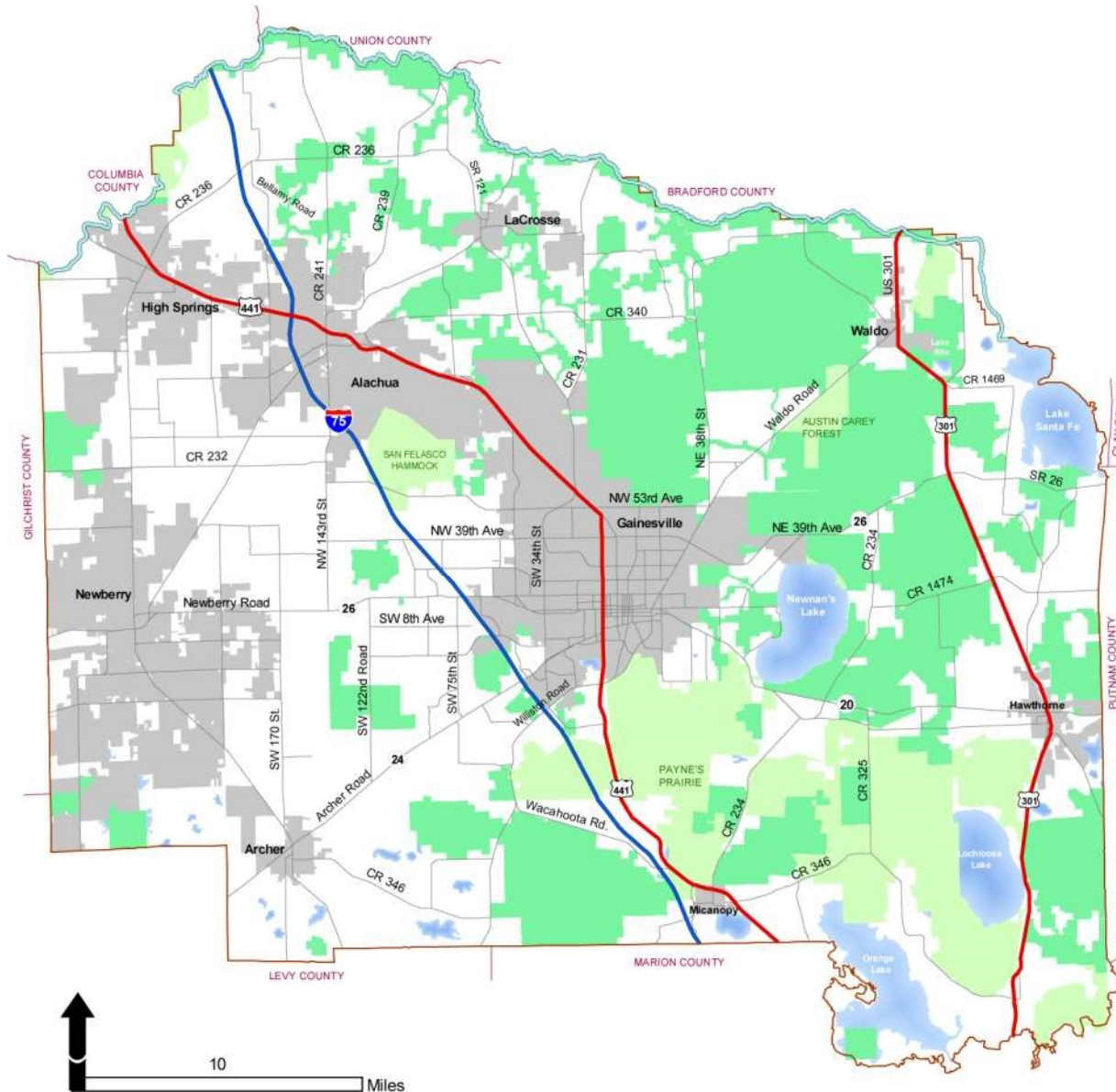
This map is part of the Future Land Use Map (FLUM) Series. The FLUM Series includes maps such as the County Wide Map, the Urban Cluster and Surrounding Area Map, the Wetlands and Floodplains Map, the Murphree Well Field Management Zones Map, the USDA Soil Map (incorporated by reference), Strategic Ecosystems map, activity center maps, and special study area maps.
Date of Production: 2-11-2008

Prepared by:

Alachua County Government
Department of Growth Management
10 SW 2nd Avenue
Gainesville, Fl 32601
(352) 374-5249



<http://growth-management.alachua.fl.us/>

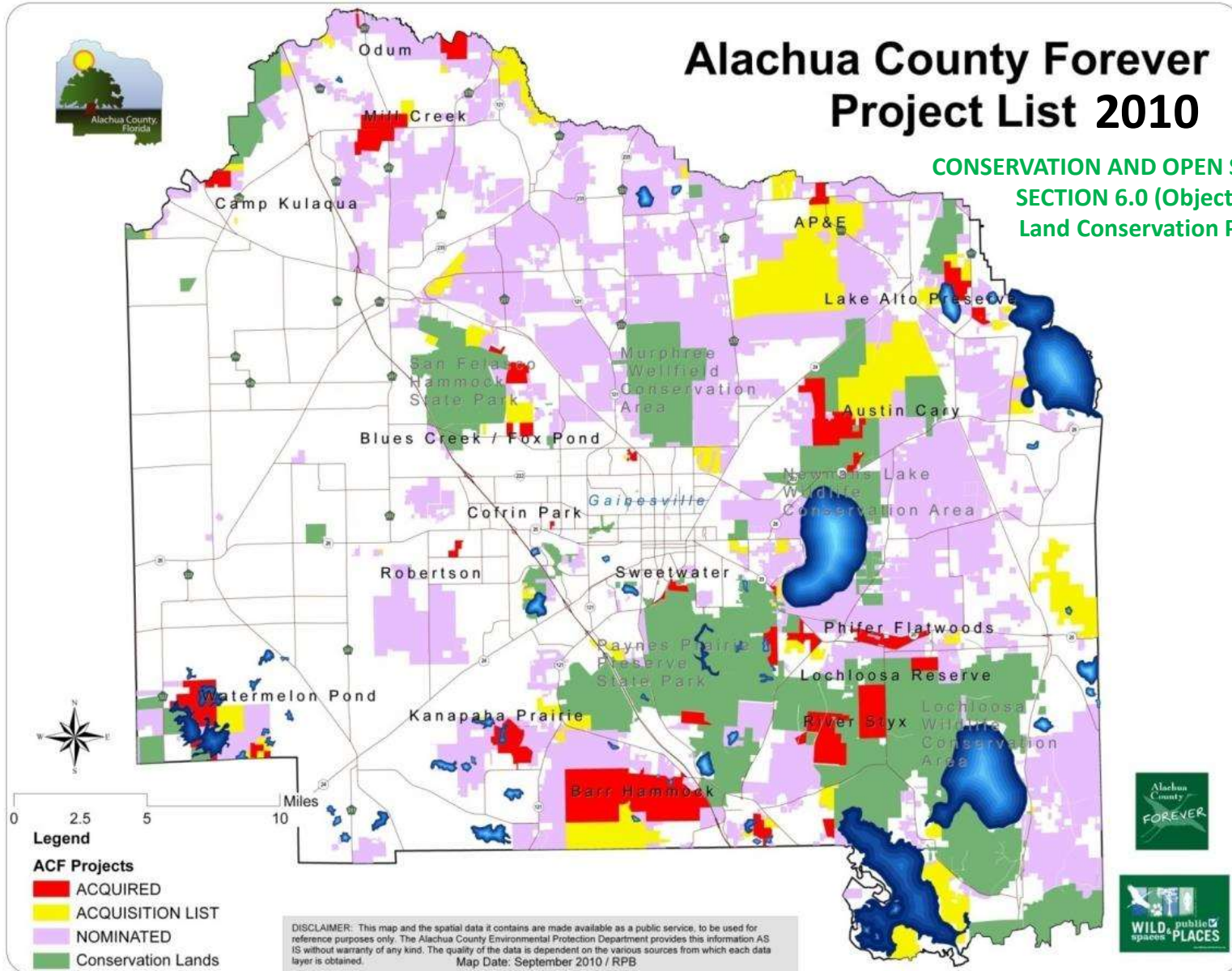




CONSERVATION AND OPEN SPACE ELEMENT SECTION 6.0 **Strategic Ecosystems**

- Mapped on large-scale; ground-truthed by fieldwork for development activities
- Development activities trigger mandatory set-aside of best habitat areas
- Permanent protection
- Critical habitat for plants and animals
- Critical Ecological Corridors overlaps

Parks & Land Conservation





Evaluation and Appraisal State Requirements

- Each local government is required to evaluate its comprehensive plan at least every 7 years
- Florida’s “Community Planning Act” amendments adopted in 2011 simplified the Evaluation and Appraisal process and requirements (s. 163.3191, F.S.)
 - Local governments shall evaluate plans to determine if amendments are necessary to reflect **changes in state statutes** since the last update, and notify the state land planning agency.
 - Local governments are “encouraged to comprehensively evaluate and, as necessary, update comprehensive plans to reflect **changes in local conditions**” as part of the process.

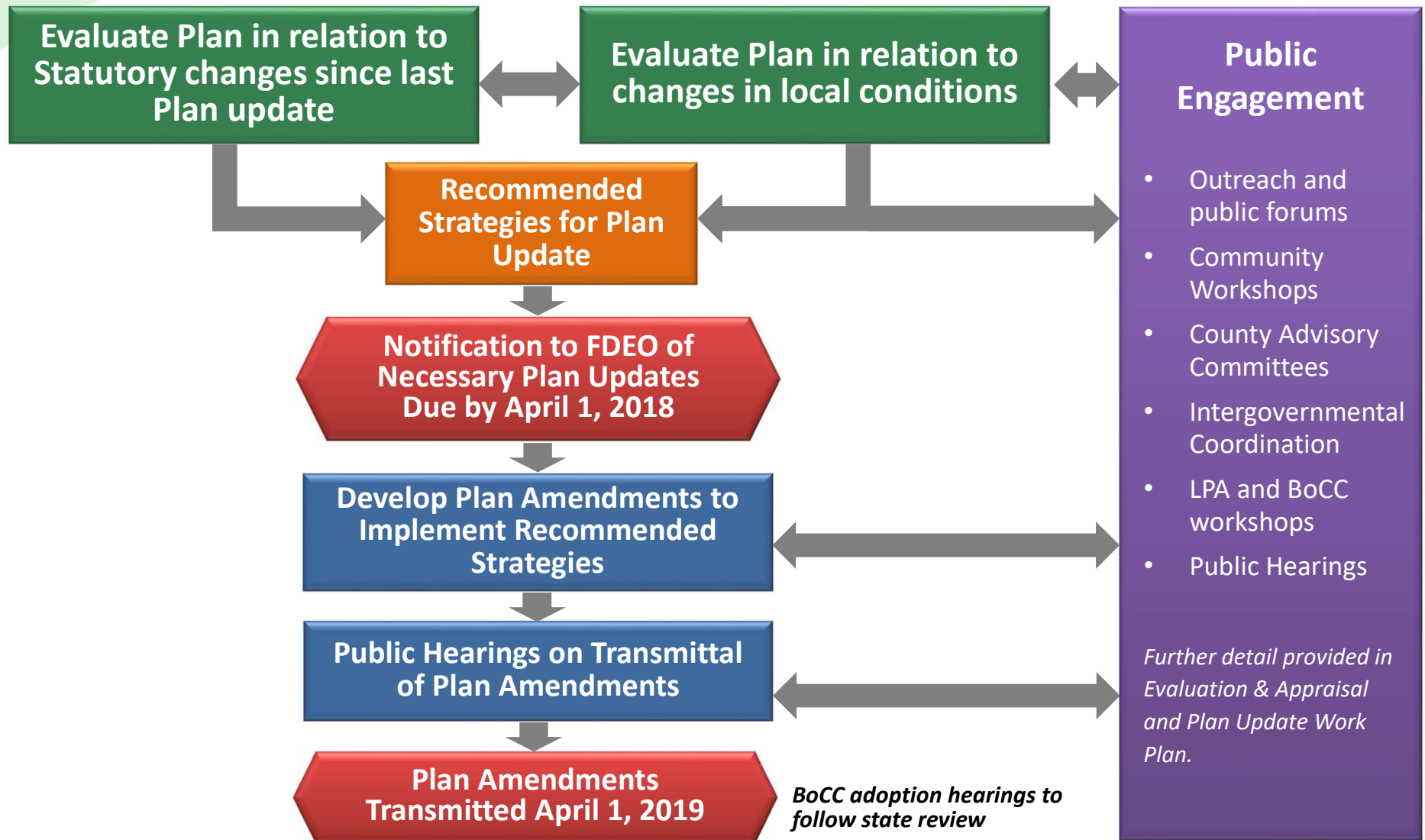


Evaluation and Appraisal Schedule for Alachua County

- Alachua County must submit a letter notifying the Florida Department of Economic Opportunity (DEO) whether amendments to the Comprehensive Plan are necessary to reflect changes in state requirements no later than **April 1, 2018.**
- The County must transmit needed amendments for review by state agencies within 1 year of submittal of its notification letter (not later than April 1, 2019)



Evaluation & Appraisal and Plan Update Process





Public Engagement

- **Outreach**
 - Website
 - Email List
 - Public Comment Email Address
 - Press Releases
 - Channel 12 Content
 - County Social Media
 - Community Update Newsletter
 - Brochures
 - General & Community Newspapers
 - Community Surveys
- **Direct Engagement with Public**
 - Community Workshops
 - Stakeholder Groups
- **Local Government Meetings and Public Hearings**
 - Advisory Committees, including Alachua County Planning Commission/Local Planning Agency
 - Board of County Commissioners



Evaluation & Appraisal and Plan Update Timeline

04/17 | 06/17 | 08/17 | 10/17 | 12/17 | 02/18 | 04/18 | 06/18 | 08/18 | 10/18 | 12/18 | 02/19 | 04/19

Statutory Changes

Local Issues and Needs

Develop Data and Analysis

Develop Strategies for Plan Update

Notification Letter to State
April 1, 2018

Develop Draft Plan Amendments

Public Hearings on Plan Amendment Transmittal

Plan Amendments Transmitted by April 1, 2019

BoCC adoption hearing to follow state review

Public Participation

Outreach

Public Engagement

Meetings & Workshops with Advisory Committees, LPA, BoCC



Next Steps

Update Data and Analysis

- Environmental data
 - Environmental indicators?
 - Preservation and open space lands
 - Other?
- **Changes in Florida Statutes**
 - **Identify Local Issues to Consider**



Community Discussions

- Advisory Committees, including Land Conservation Board, Environmental Protection Advisory Committee
- Local Stakeholders - Alachua Conservation Trust, Sierra Club, Others?

For information contact Growth Management 352-374-5249

Ken Zeichner, Principal Planner, ksz@alachuacounty.us



In Conclusion

What issues does the Committee recommend be addressed as part of the Evaluation and Appraisal of the Comprehensive Plan?