



Evaluation & Appraisal and Update of Alachua County Comprehensive Plan: 2011-2030

Work Plan

*Presentation to Metropolitan Transportation Planning Organization
Advisory Boards*

Jeff Hays, AICP, Transportation Planning Manager
Ken Zeichner, AICP, Principal Planner
Growth Management Department

October 11, 2017



TRANSPORTATION MOBILITY ELEMENT



**Policy Overview for
identification and discussion of issues associated with
the Alachua County Comprehensive Plan
Evaluation & Appraisal and Update**

MTPO Advisory Committees: October 11, 2017



Participation in Update of County Comprehensive Plan

Work Plan for Evaluation & Appraisal & Update of
Alachua County Comprehensive Plan: 2011-2030

<https://growth-management.alachuacounty.us/formsdocs/Work-Plan-Comp-Plan-Update.pdf>

For info and to sign up for meeting notices see
Alachua County Growth Management website:

<https://growth-management.alachuacounty.us/planning/CompPlanUpdate>



Role of the Comprehensive Plan

- Expression of the community's long-range vision
- Policy framework adopted by the Alachua County Commission for guiding local decision-making
- County's Plan addresses a broad range of topics
 - Built Environment
 - Natural Resource Protection
 - Public Facilities and Services
 - Intergovernmental Coordination
 - Energy
 - Economic Development
 - Capital Planning
 - Housing
 - Historic Resources
 - Community Health
- Data and Analysis-Based
- Development decisions must be consistent with Plan



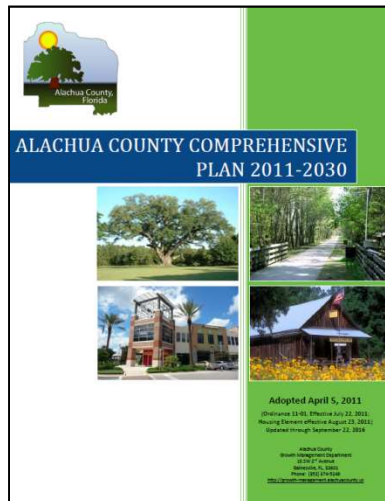
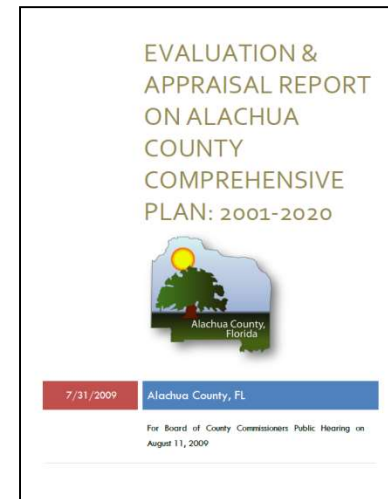
Comprehensive Planning Process





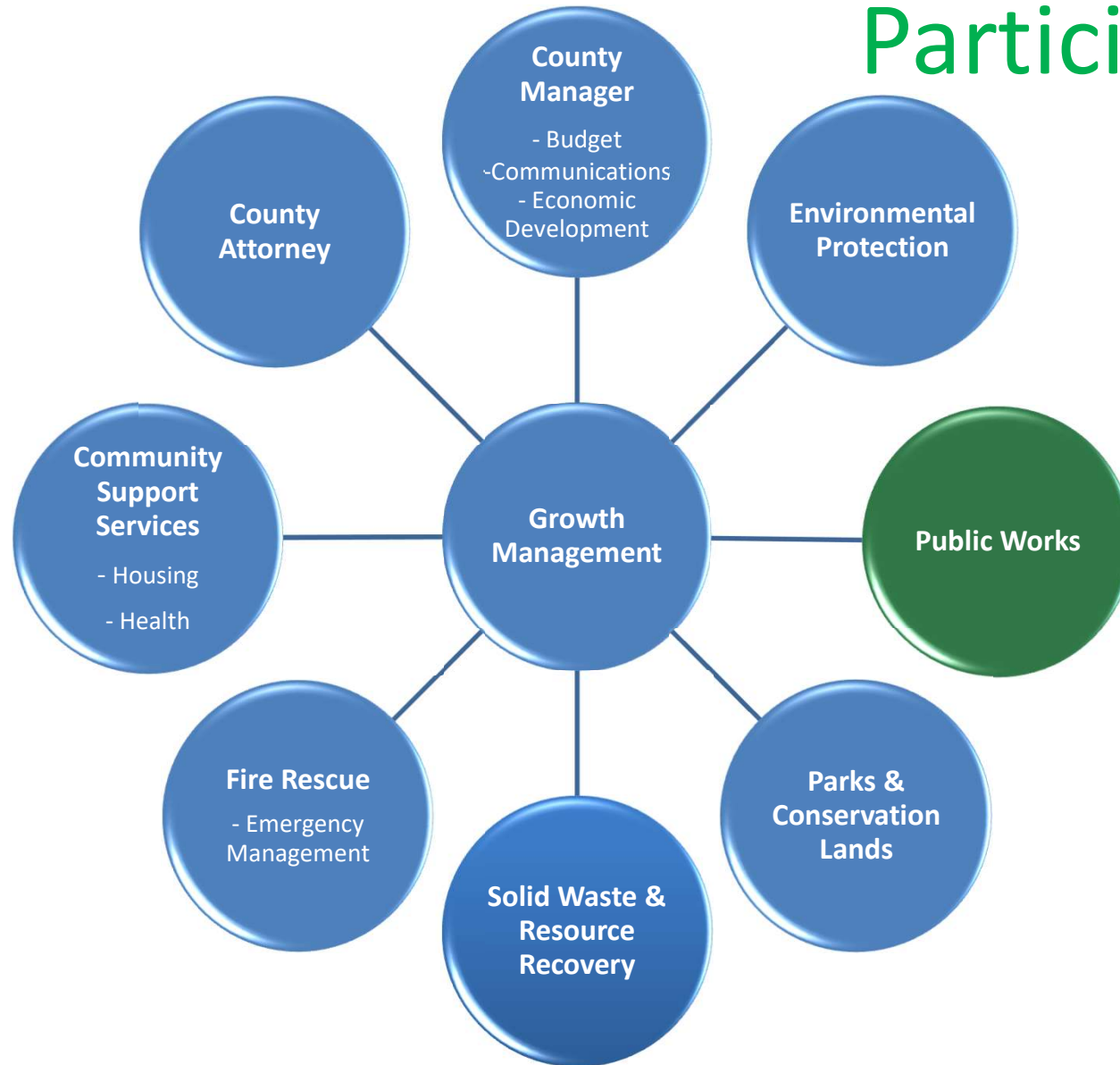
Alachua County Comprehensive Plan: 2011-2030

Last Evaluation and Appraisal
of Plan in 2008-2009



Last Plan update based on
Evaluation and Appraisal was
adopted by County Commission
in 2011

Interdepartmental Participation





Alachua County Comprehensive Plan 15 Elements

Future Land Use

Transportation Mobility

Housing

Potable Water & Sanitary Sewer

Solid Waste

Stormwater Management

Conservation & Open Space

Recreation

Intergovernmental Coordination

Capital Improvements

Economic

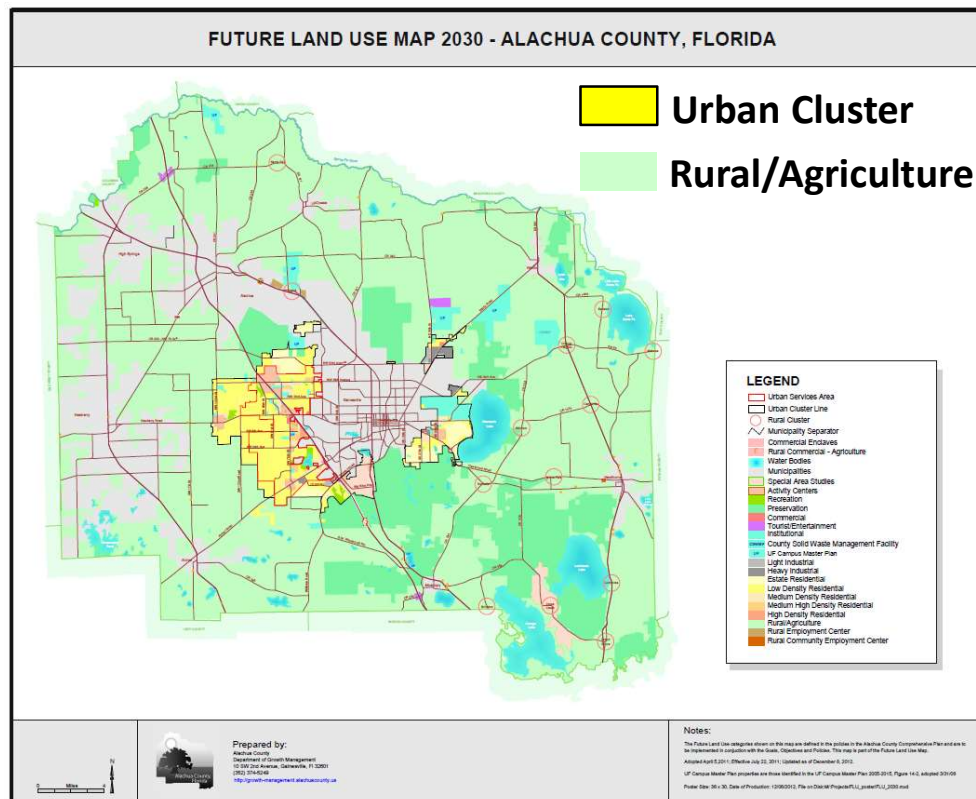
Historic Preservation

Public School Facilities

Community Health

Energy

Alachua County Comprehensive Plan FUTURE LAND USE MAP



- Focus urban development in Urban Cluster for efficient provision of facilities and services
- Strengthen separation of rural and urban uses
- Minimize conversion of land from rural to urban



TRANSPORTATION MOBILITY ELEMENT

[Alachua County Comprehensive Plan
2011-2030
Transportation Mobility Element](#)



ALACHUA COUNTY COMPREHENSIVE PLAN 2011-2030





TRANSPORTATION MOBILITY ELEMENT

GOAL - PROGRAM OVERVIEW

GOAL ESTABLISH A MULTI-MODAL TRANSPORTATION SYSTEM THAT PROVIDES MOBILITY FOR PEDESTRIANS, BICYCLISTS, TRANSIT USERS, MOTORIZED-VEHICLE USERS, USERS OF RAIL AND AVIATION FACILITIES, AND IS SENSITIVE TO THE CULTURAL AND ENVIRONMENTAL AMENITIES OF ALACHUA COUNTY.

LAND USE



- Transit Oriented Development
- Traditional Neighborhood Development
- Streamlined Approvals

TRANSPORTATION



- Multi-Modal
- Roadway Connections
- Express and Premium Transit
- Bicycle & Pedestrian

FUNDING

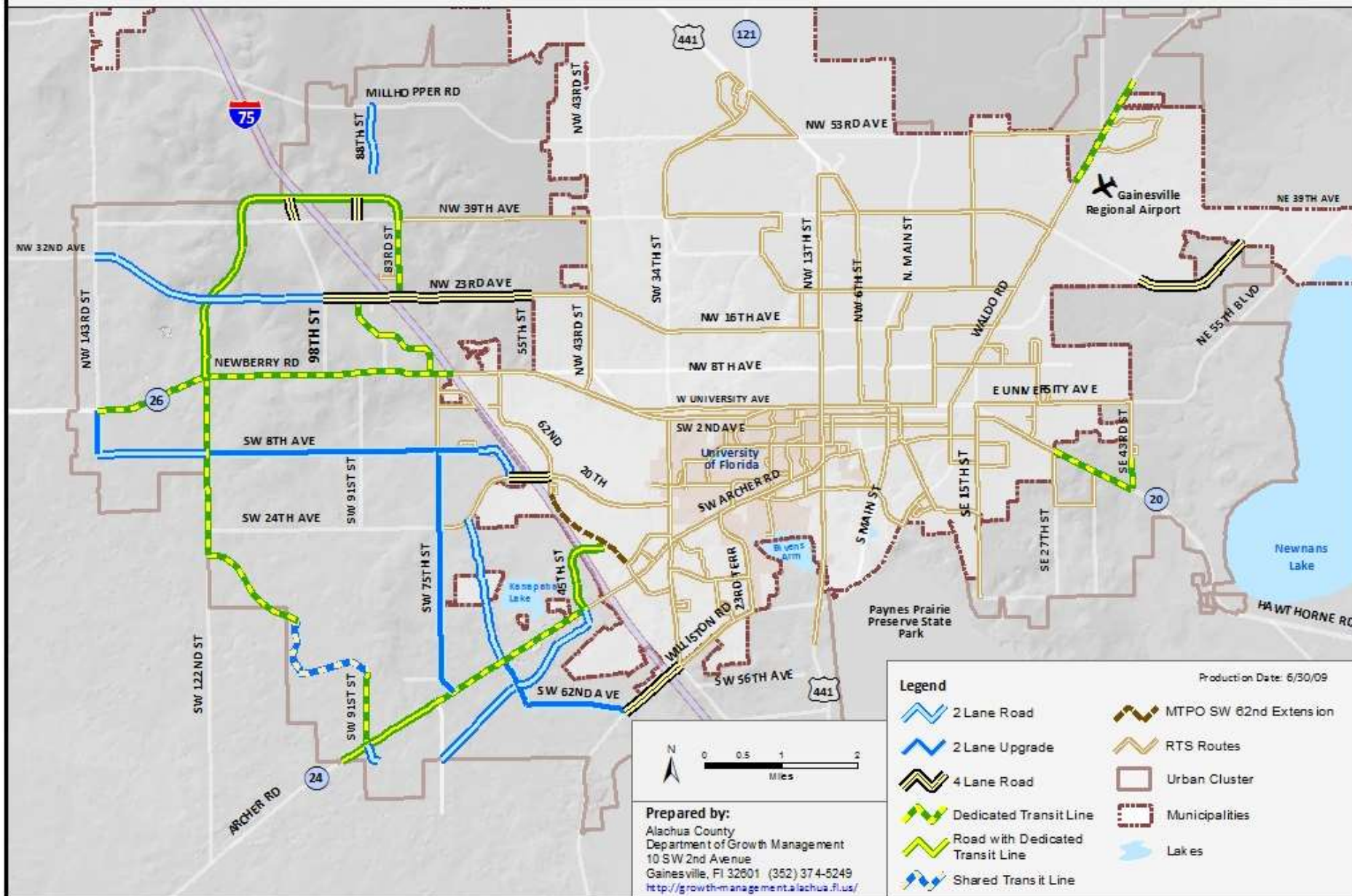


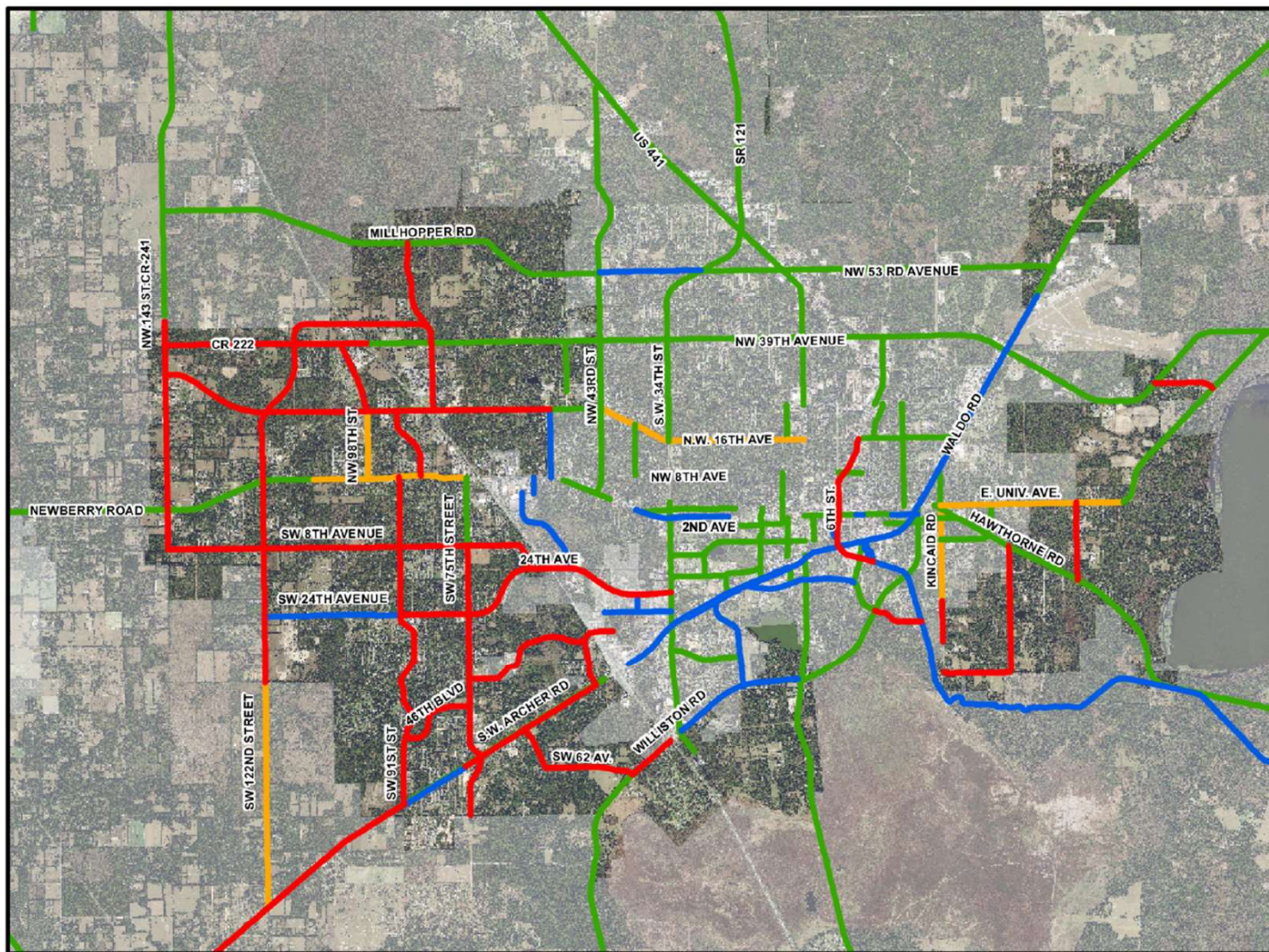
- Multi-Modal Transportation Mitigation
- Tax Increment Financing
- Local Match for Federal and State Grants

Alachua County Mobility Plan








TRANSPORTATION MOBILITY AREAS





Existing & Future Bicycle & Pedestrian Network

Legend

-  Existing multi-use path
-  Existing bike lane/shoulder
-  Future multi-use path
-  Future bike lane/shoulder
-  Area Outside of Urban Cluster



Notes:

Adopted: January 26, 2010
Effective Date: April 13, 2010
Map Production Date: 3/30/10

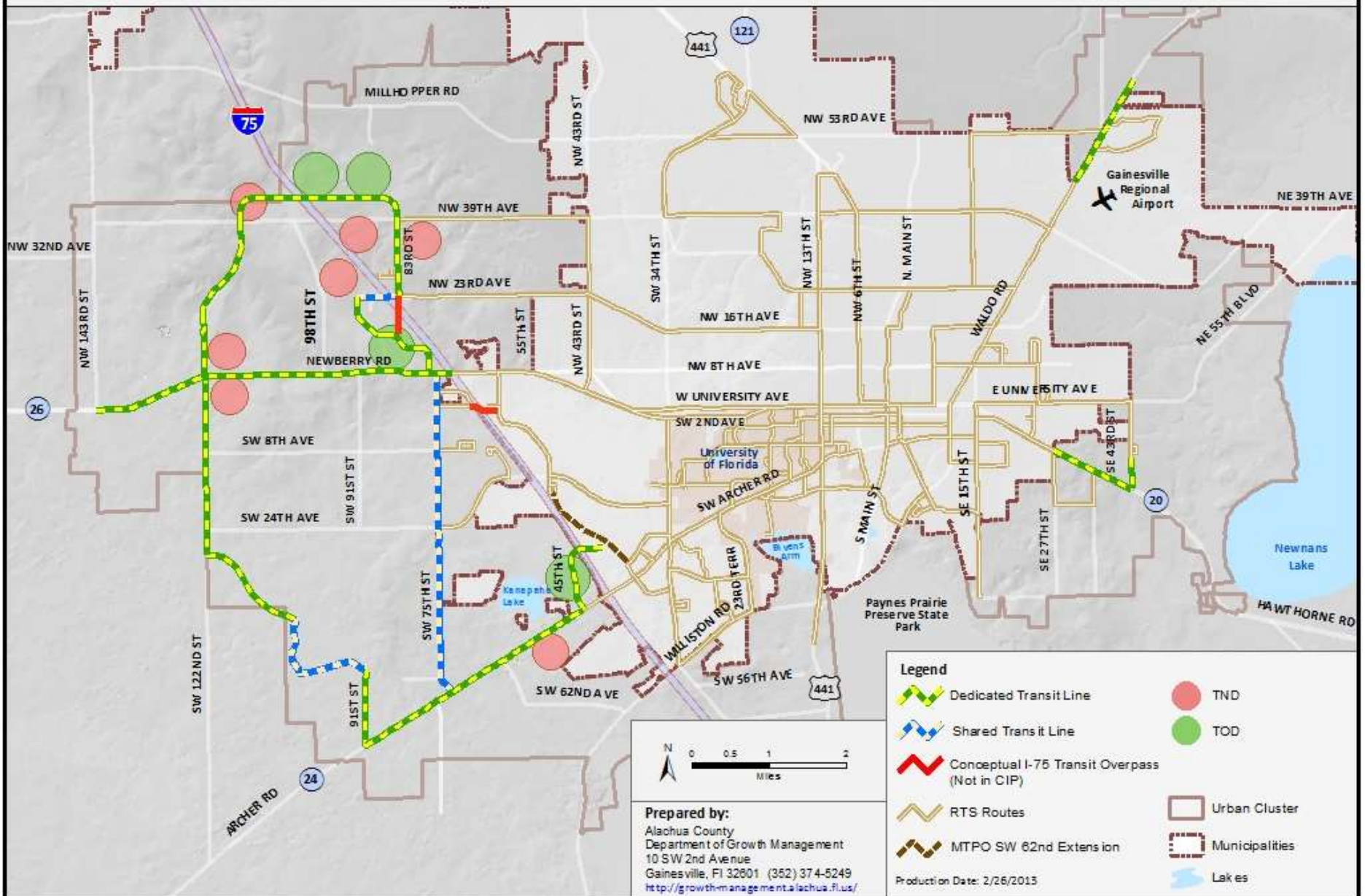


Prepared by:

Board of County Commissioners
Department of Growth Management
10 SW 2nd Avenue
Gainesville, FL 32601
(352) 374-5249

<http://growth-management.alachua.fl.us/>

Transit Oriented Development and Traditional Neighborhood Developments



LAND USE AND FISCAL EFFICIENCY

Assessed Value per Acre

\$0 \$2,000,000 \$4,000,000 \$6,000,000 \$8,000,000 \$10,000,000

Low Density Residential

Strawberry Fields

\$374,184



Community Retail

Jonesville Shopping Center

\$486,427



Regional Retail

Butler Plaza

\$616,636

Low Rise Mixed Use

Tioga Town Center

\$662,613



Mid-Intensity Mixed Use

Downtown Gainesville

\$2,435,860

Higher Intensity Mixed Use

Union Street Station

\$9,115,559

County TOD

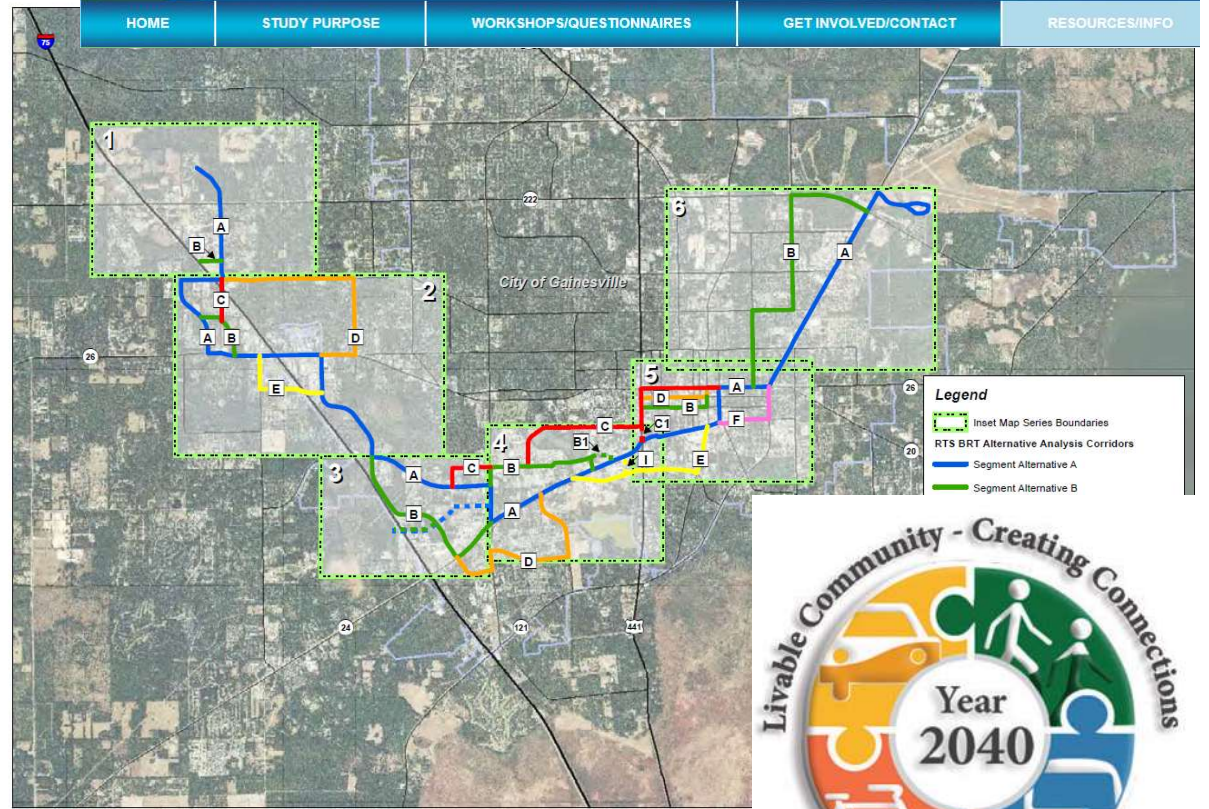
Celebration Pointe
Build-out Projection

\$5,200,000



PLAN REGIONALLY

COMMUNITY PARTNERS





Evaluation and Appraisal State Requirements

- Each local government is required to evaluate its comprehensive plan at least every 7 years
- Florida's "Community Planning Act" amendments adopted in 2011 simplified the Evaluation and Appraisal process and requirements (s. 163.3191, F.S.)
 - Local governments shall evaluate plans to determine if amendments are necessary to reflect **changes in state statutes** since the last update, and notify the state land planning agency.
 - Local governments are "encouraged to comprehensively evaluate and, as necessary, update comprehensive plans to reflect **changes in local conditions**" as part of the process.

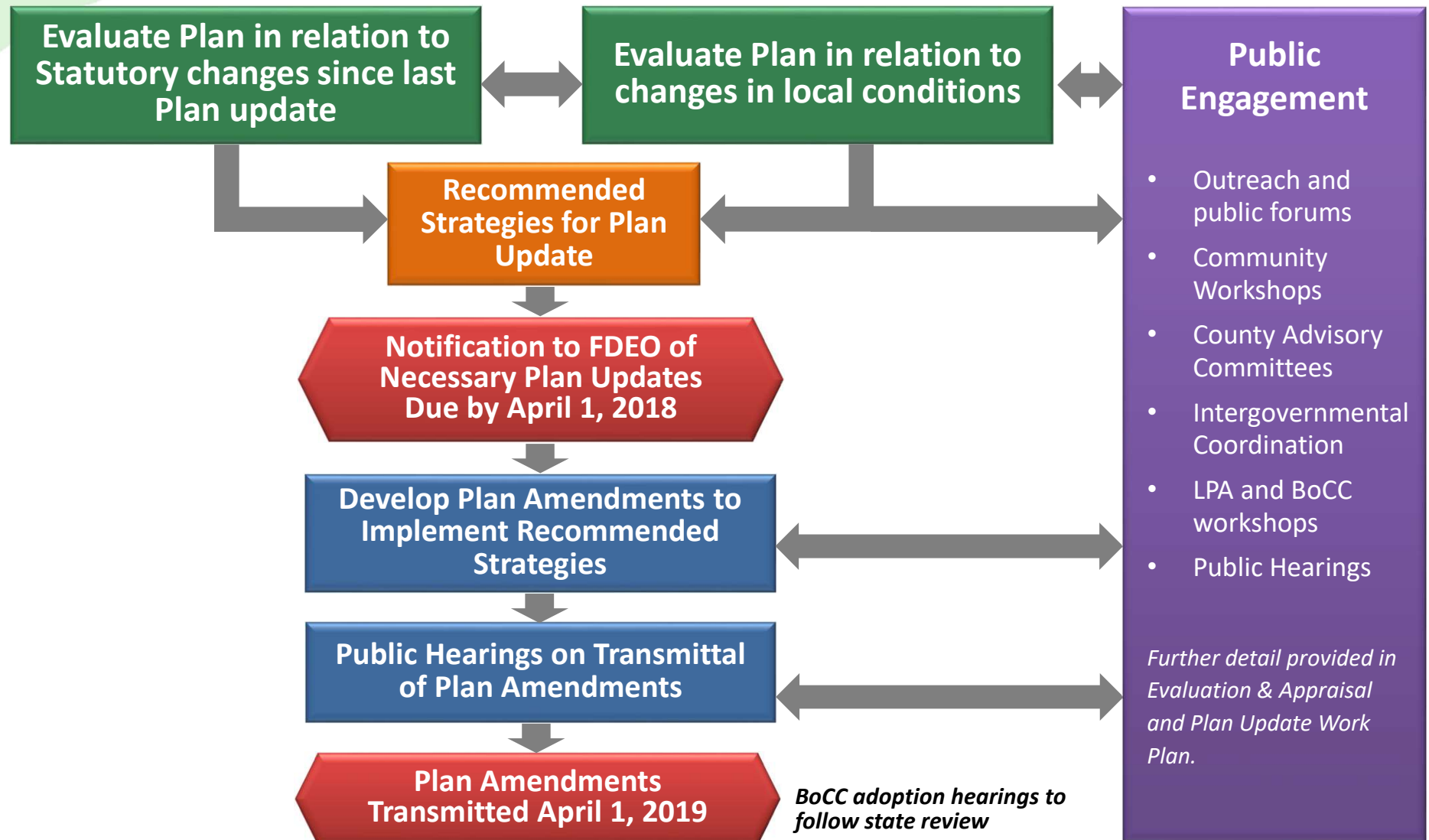


Evaluation and Appraisal Schedule for Alachua County

- Alachua County must submit a letter notifying the Florida Department of Economic Opportunity (DEO) whether amendments to the Comprehensive Plan are necessary to reflect changes in state requirements no later than **April 1, 2018.**
- The County must transmit needed amendments for review by state agencies within 1 year of submittal of its notification letter (not later than April 1, 2019)



Evaluation & Appraisal and Plan Update Process





Public Engagement

- **Outreach**

- Website
- Email List
- Public Comment Email Address
- Press Releases
- Channel 12 Content
- County Social Media
- Community Update Newsletter
- Brochures
- General & Community Newspapers
- Community Surveys

- **Direct Engagement with Public**

- Community Workshops
- Stakeholder Groups

- **Local Government Meetings and Public Hearings**

- Advisory Committees, including Alachua County Planning Commission/Local Planning Agency
- Board of County Commissioners



Evaluation & Appraisal and Plan Update Timeline

04/17 | 06/17 | 08/17 | 10/17 | 12/17 | 02/18 | 04/18 | 06/18 | 08/18 | 10/18 | 12/18 | 02/19 | 04/19

Statutory Changes

Local Issues and Needs

Notification
Letter to
State
April 1, 2018

Develop Data and Analysis

Develop Draft
Plan Amendments

Public Hearings on
Plan Amendment
Transmittal

Develop Strategies for Plan Update

Plan
Amendments
Transmitted by
April 1, 2019

*BoCC adoption hearing
to follow state review*

Public Participation

Outreach

Public Engagement

Meetings & Workshops with
Advisory Committees, LPA, BoCC



Next Steps

Update Data and Analysis

- Transportation Data
- Coordinate with MTPo plan
- Other?

• Changes in Florida Statutes

• Identify Local Issues to Consider

Community Discussions

- Advisory Committees
- Local Stakeholders



For information contact Growth Management 352-374-5249

Ken Zeichner, AICP, Principal Planner ksz@alachuacounty.us

Jeff Hays, AICP, Transportation Planning Manager jhays@alachuacounty.us



In Conclusion

What issues does the Committee recommend be addressed as part of the Evaluation and Appraisal of the Comprehensive Plan?