

**Alachua County Comprehensive Plan Update:
Draft Revisions to Goals, Objectives, Policies, and Maps
For Board of County Commissioners Meeting
December 6, 2018**

**Draft Revisions to Comprehensive Plan
Table of Contents**

<u>Conservation and Open Space Element</u>	2
<u>Recreation Element</u>	7
<u>Solid Waste Element</u>	8
<u>Capital Improvements Element</u>	10
<u>Energy Element</u>	14
<u>Intergovernmental Coordination Element</u>	18
<u>Economic Element</u>	22
<u>Public School Facilities Element</u>	31
<u>Community Health Element</u>	32
<u>Future Land Use Element</u>	42

Text key for proposed changes:

Proposed additions are underlined

Proposed deletions are ~~struck through~~

Existing language in normal font

**Alachua County Comprehensive Plan Update:
Draft Revisions to Goals, Objectives, Policies, and Maps
For Board of County Commissioners Meeting
December 6, 2018**

CONSERVATION AND OPEN SPACE ELEMENT

COSE Objective 5.2 - Open Space

Preserve open space within developments to ensure public health, safety, and welfare; protect and enhance natural resources; provide public gathering spaces; promote pedestrian and bicycle connectivity; and enhance recreational opportunities.

Policy 5.2.1 Natural features such as steep slopes, ridges, sinkhole areas, floodplains, and other unsuitable areas for urban development shall be retained as open space areas. If appropriate, these areas shall be developed for use as trails, and where possible, used to connect other recreation and open space areas and other developments.

Policy 5.2.2 Pervious open space shall be provided on at least 20% of the development site, except as authorized in Policy 5.2.8. When land development involves a parcel that contains conservation areas, the County's open space requirements shall be fulfilled first with conservation areas, then with other allowable types of open space as described below: ~~through a variety of features such as:~~

- (a) Open Space requirements shall be fulfilled first with any of the conservation areas listed in Policy 3.1.1 and be recognized as Primary Open space,
- (b) Secondary open space shall consist of areas that form linked open space networks with existing or potential open space areas on adjacent properties, other developments or greenways, and be consistent, when applicable, with the Greenways Master Plan; or are areas identified as significant habitat.
- (c) Tertiary open space shall consist of community gardens, community fields, greens, plazas, non-irrigated sustainable landscape areas or existing natural areas, or stormwater management areas as specified in the Land Development Code.
- ~~(a) Open spaces dedicated primarily to public, recreation, or pedestrian use, such as community gardens, community fields, greens, plazas, and squares;~~
- ~~(b) Natural areas of non-invasive trees and plants.~~
- ~~(c) Landscaped areas, including street trees, utilizing a variety and balanced mix of canopy and understory trees, shrubs, and groundcovers, consistent with xeriscape principles and emphasizing native species.~~
- ~~(d) linkages to larger open space corridors.~~
- ~~(e) Portions of stormwater management areas that meet conservation, recreation, or open space design criteria as specified in the Land Development Code.~~
- ~~(f) Portions of green roofs that meet open space design criteria to be specified in the Land Development Code.~~

**Alachua County Comprehensive Plan Update:
Draft Revisions to Goals, Objectives, Policies, and Maps
For Board of County Commissioners Meeting
December 6, 2018**

Policy 5.2.3 ~~When land development involves a parcel that contains conservation areas, the County's open space requirements shall be fulfilled first with conservation areas, then with other allowable types of open space.~~ Open space requirements are not intended to diminish other conservation requirements in this element and shall be protected as described below:-

(a) Permanent protection.

(1) All Conservation Area open space shall be maintained and remain undeveloped in perpetuity using a legal instrument that runs with the land to set forth conditions and restrictions on use. The Unified Land Development Code shall provide The Unified Land Development Code shall provide alternative options for protection of conservation resources based on quality, size, connectivity, and other criteria outlined in the code.

(2) The boundaries of designated open space areas shall be clearly delineated on plans, including record plats, and marked in the field to distinguish these areas from developed areas.

Reason: Most of this language already exists in the Future Land Use Element within the Rural Ag section, moving it here prevents a need to cross reference and additional language in 5.2.3(a)(1) allows more options for the permanent protection of conservation areas within the urban area as requested by the BOCC.

Policy 5.2.4 Development shall provide for shading of paved areas, as outlined in the land development regulations.

Policy 5.2.5 Open space in the rural area shall be preserved in accordance with policies under Objective 6.2 of the Future Land Use Element.

Policy 5.2.6 Nonresidential and mixed use developments, including TOD or TND, may reduce the amount of open space maintained onsite by participating in the County's Transfer of Development Rights Program and purchasing development rights in accordance with Section 9.0 of the Future Land Use Element. The purchase of development rights shall be recorded on the Final Development Plan in the manner provided in the Land Development Regulations.

Policy 5.2.7 Within Transit Oriented Developments, Traditional Neighborhood Developments, and mixed use development within Activity Centers, a portion of public plazas or squares which combine natural areas with permeable paved surfaces may be counted toward the required amount of open space to be maintained onsite, provided that the open space requirements of this section are fulfilled first with conservation areas in accordance with Policy 5.2.3. Design standards for plazas and squares which may qualify as open space shall be provided in the Land Development Code, and shall include: (1) minimum and maximum size thresholds and dimensions; (2) maximum area which may be applied toward the open space requirement based on development size; (3) allowance for the use of permeable paved surfaces; and (4) standards for general public accessibility and functional integration with surrounding development.

**Alachua County Comprehensive Plan Update:
Draft Revisions to Goals, Objectives, Policies, and Maps
For Board of County Commissioners Meeting
December 6, 2018**

Policy 5.2.8 Excluding the necessity to meet primary open space as identified in Policy 5.2.3, the following project types are not required to set aside additional pervious open space:

- a. Family Homestead Subdivisions
- b. Rural Ag Unpaved Subdivisions
- c. Towers, outdoor recreation, and major utilities.

Reason: Certain types of development activities do not fit well into the concept of open space set aside. Some of these either do not have a pedestrian component to them, like towers, or are lot splits for existing family members (Family Homestead) and are small scale rural ag lot splits (Rural Ag unpaved subdivisions) and do not conform well to the concept of open space under common ownership. Many redevelopment sites are already fully developed and may not have existing open space within the project; hence, the requirement to meet 20% open space may deter redevelopment of the site. Staff is suggesting that the ULDC provide specifics for determining the open space standards for redevelopment projects.

Policy 5.2.9 Excluding the necessity to meet any primary and secondary open space requirements, certain development projects, as outlined in the code, may provide alternatives to the 20% open space through one of the following options:

- a. Provide fee payment in lieu of set aside at a rate for the appraised value of remaining percentage of land required to meet the 20% as determined in the Unified Land Development Code.
- b. Meet the PD-TDR requirements in the Unified Land Development Code.
- c. Meet TDR requirements of Future Land Use Element Objective 9.1 and associated policies.

OBJECTIVE 6.3 - LINKED OPEN SPACE NETWORK

Develop a linked open space network, or Ggreenways Master Plan system, that can be managed to support the protection, enhancement and restoration of functional and connected natural systems while providing unique opportunities for recreation, multi-modal transportation, and economic development.

Policy 6.3.1 The County shall develop planning strategies for a gGreenways Master Plan system that includes but is not limited to consideration of the following components:

- (a) Conservation and preservation areas
- (b) Environmentally sensitive lands
- (c) Open space areas
- (d) Parks and recreational facilities
- (e) Commercial recreation areas
- (f) Surface water systems
- (g) Bikeways and trails

**Alachua County Comprehensive Plan Update:
Draft Revisions to Goals, Objectives, Policies, and Maps
For Board of County Commissioners Meeting
December 6, 2018**

- (h) Utility corridors
- (i) Stormwater management systems
- (j) Habitat corridors
- (k) Historic resources
- (l) Scenic corridors

Policy 6.3.2 The County shall prioritize maintenance of ecologically functional linkages between ecological corridor core areas as shown on the Critical Ecological Corridors Map through various programs and activities, including: (a) implementation of development review, special area planning for Strategic Ecosystems, open space, land acquisition programs and associated management plans, and the Transfer of Development Rights program (see Future Land Use Element Section 9.0); (b) various intergovernmental coordination efforts with municipalities, adjacent counties, regional entities, state and federal agencies to promote maintenance of linkages of ecological core areas; and (c) outreach programs to promote the value of conserving linked ecosystems/corridors and support tax incentives that promote the preservation of mapped ecological core areas.

Policy 6.3.3 Where necessary to connect publicly owned recreation and conservation lands to develop the ~~g~~Greenways Master Plan system, the County shall encourage public acquisition of land and other means of voluntary landowner participation.

Policy 6.3.4 The County shall develop a strategy for identifying and providing for publicly accessible open spaces of native flora and fauna in or near neighborhood settings. Resource-based recreation such as picnicking and hiking shall be encouraged.

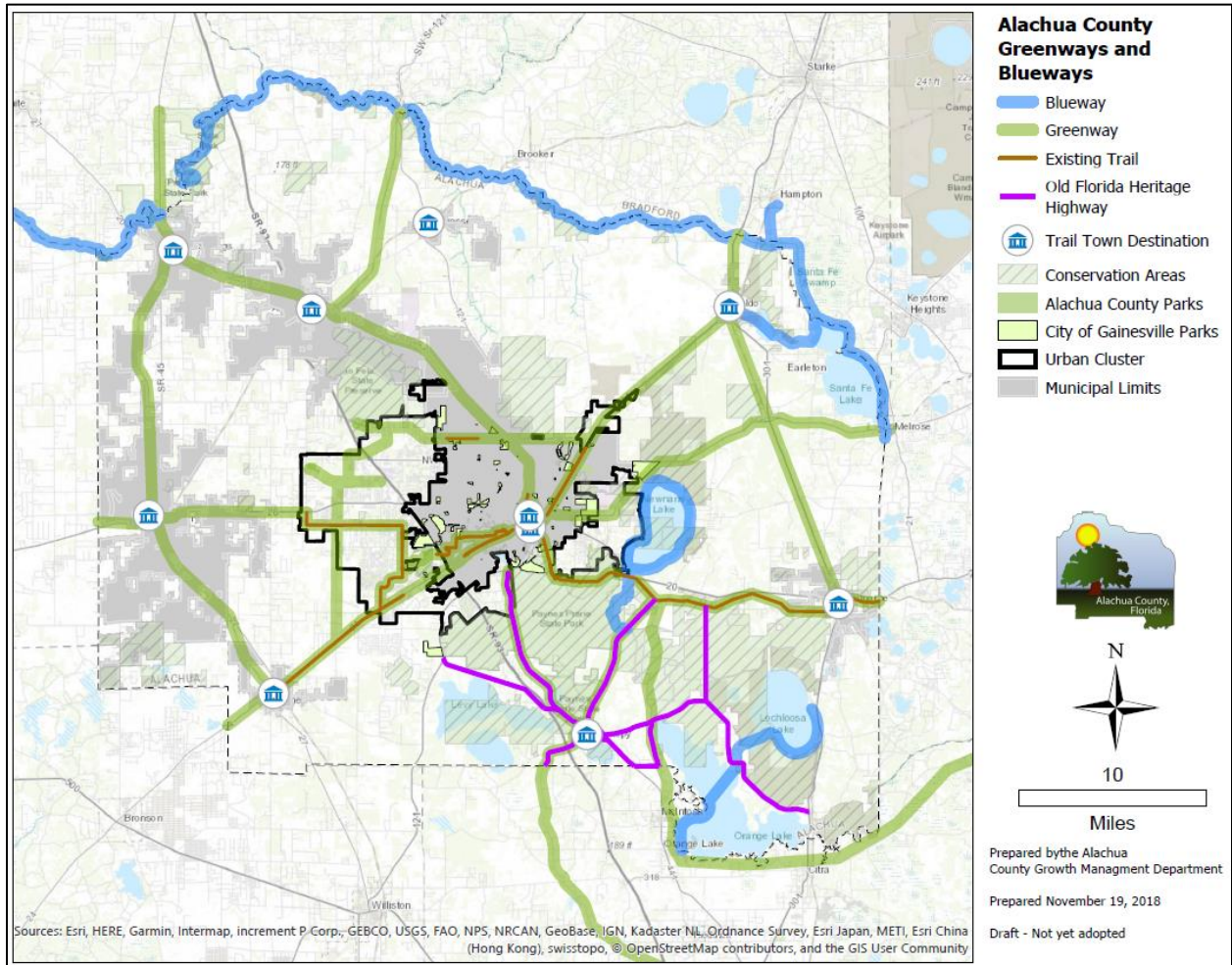
Policy 6.3.5 To protect sensitive ecosystems and habitat corridors, the County shall locate and design greenway facilities in an environmentally sensitive manner, including limiting or prohibiting public access where necessary to protect such resources.

Policy 6.3.6 The County shall approve a master management plan for the ~~G~~greenways Master Plan system, and specific plans for lands acquired, preserved, or otherwise included in the greenways plan system. The management plans shall address natural resources protection, public access, recreation, education, and opportunities for economic development that is complementary to maintaining the system. The management plans shall identify anticipated costs and departments responsible for implementation of the plans.

Policy 6.3.7 The County shall coordinate with local municipalities in order to include appropriate incorporated properties as part of the greenways system.

**Alachua County Comprehensive Plan Update:
Draft Revisions to Goals, Objectives, Policies, and Maps
For Board of County Commissioners Meeting
December 6, 2018**

Proposed Greenways Master Plan Map (draft)



Proposed additions are underlined
 Proposed deletions are ~~struck through~~

**Alachua County Comprehensive Plan Update:
Draft Revisions to Goals, Objectives, Policies, and Maps
For Board of County Commissioners Meeting
December 6, 2018**

RECREATION ELEMENT

GOAL 1

TO PROVIDE AN INTEGRATED RECREATION AND OPEN SPACE SYSTEM FOR ALACHUA COUNTY.

OBJECTIVE 1.1

Develop and maintain an enhanced system of activity-based and resource-based recreational facilities that consist of a broad range of developed and protected sites and programmed recreation that is integrated by service area throughout the County from the neighborhood to the regional scale and accessible to all residents of Alachua County.

...

Policy 1.1.9 The Countywide Recreation Master Plan shall be updated by the year 2020 and every ten (10) years thereafter. The parks and recreation component of the Recreation Master Plan shall be updated every five years. The Recreation Master Plan will accomplish the following objectives:

- (a) update the County's inventory of public parks, trails and greenways, and conservation lands;
- (b) determine residents' needs and priorities;
- (c) develop a new long-range parks and recreation vision in response to the community's needs, trends and best practices;
- (d) develop a phasing, funding and implementation strategy.

Policy 1.1.10 The Recreation Master Plan shall be used to update comprehensive plan policies and level of service standards, the Capital Improvements Plan, land development regulations and park/recreation impact fees.

Policy 1.1.11 The Recreation Master Plan shall be developed in collaboration with the City of Gainesville and other municipalities, state agencies and other parks and recreation providers in Alachua County.

Policy 1.3.2 The County shall coordinate efforts with the State and the municipalities to establish a Greenways Master Plan network of recreational trails and public access that would connect natural and cultural features of the County and provide educational and recreational value to Alachua County citizens. Such a network should be developed in a sustainable manner and include:

- (a) Appropriate access to geological, archaeological, historical, environmental and recreational features.
- (b) Trail linkages such as creekside boardwalks, nature trails through hammocks and along prairies, canals and canoe trails, and connections to nature centers, parks and exhibits.

**Alachua County Comprehensive Plan Update:
Draft Revisions to Goals, Objectives, Policies, and Maps
For Board of County Commissioners Meeting
December 6, 2018**

- (c) Rail to trails for connective access between recreational sites and activity centers.
- (d) A plan to link existing and new development, conservation areas and other areas of public interest with the greenways as shown on the Greenways Master Plan Map.

Reason: Adding language to support an interconnected open space plan (a.k.a. Greenways Master Plan)

OBJECTIVE 1.7

Alachua County shall design, develop and manage its resource-based parks and recreational facilities for the purposes of natural systems restoration, conservation and education.

Policy 1.7.3 Alachua County shall landscape park areas with an emphasis on native vegetation and consistent with the principles of xeriscaping and sustainable landscaping.

New Recreation Element Definitions:

Greenways Master Plan: An interconnected network of trails, natural areas, and other open space that conserve natural ecosystem values and functions, sustain clean air and water, provide recreational opportunities to the community and provide a wide array of benefits to people and wildlife.

Sustainable Landscaping: Landscaping practices that do not include the application of fertilizer and permanent irrigation.

SOLID WASTE ELEMENT

GOAL 1

TO PROVIDE CLEAN, EFFICIENT, ECONOMICAL, AND ENVIRONMENTALLY SOUND MANAGEMENT OF SOLID WASTE RESOURCES IN ALACHUA COUNTY.

OBJECTIVE 1.1

Establish level of service standards for solid waste management in order to coordinate capital improvement planning with land use decisions to meet the requirement that adequate solid waste management facilities be available when needed for development concurrent with the impacts of development by implementing Policies 1.1.1 through 1.1.4.

Policy 1.1.1 The level of service (LOS) standard for solid waste disposal, used as the basis for determining availability of disposal capacity to accommodate the demand generated by existing and new development in Alachua County, is hereby established, at a minimum,

**Alachua County Comprehensive Plan Update:
Draft Revisions to Goals, Objectives, Policies, and Maps
For Board of County Commissioners Meeting
December 6, 2018**

at ~~0.73~~ 0.8 inbound tons per person per year at the Leveda Brown Environmental Park in ~~1997~~ 2018 and thereafter.

...

OBJECTIVE 1.2

Provide for safe operation and maintenance of publicly owned solid waste management facilities, in compliance with all stipulations and conditions of Florida Department of Environmental Protection (FDEP) permits; and other applicable local, state or federal regulations; provide for protection of water, soil and air resources, in compliance with local, state, and federal permit requirements including monitoring of groundwater at all public landfill sites.

...

Policy 1.2.5 ~~Due to the toxic nature of incinerator and mass burn facilities, no such facility will not~~ be included in the County solid waste system. This policy does not prohibit the combustion or thermal decomposition of vegetative yard trash, vegetative biomass and vegetative storm debris. This policy does not prohibit the combustion or thermal decomposition of hazardous waste or other materials for which there is no alternative method of disposal as mandated by Federal law. .

...

OBJECTIVE 1.5

The County shall develop and implement a waste reduction strategy that includes waste prevention, source reduction, reuse, recycling and biological disposition, resulting in a reduction of solid waste disposed per capita.

...

Policy 1.5.2 Achieve a diversion rate from disposal of 40% by December 31, 2012; 50% by December 31, 2014; 60% by December 31, 2016, 70% by December 31, 2018; and 75% by December 31, 2020. Special waste being recycled such as tires, appliances, yard trash and construction and demolition debris will be included. ~~The calculation will be made annually by dividing the tons recycled by the sum of tons disposed plus tons recycled~~ The calculation will be made in accordance with the accepted methodology of the State of Florida Department of Environmental Protection. In addition to changes in total waste diversion, the County shall track and report on indicators of improvements in waste diversion such as percentage of businesses in compliance with the mandatory commercial recycling program, percentage of residential users voluntarily recycling, rates of recycled vs. disposed waste collected at rural collection centers, or similar measures.

...

**Alachua County Comprehensive Plan Update:
Draft Revisions to Goals, Objectives, Policies, and Maps
For Board of County Commissioners Meeting
December 6, 2018**

Policy 1.5.4 The County shall increase enforcement of the mandatory commercial recycling program that includes apartments, multi-family complexes, businesses, institutions ~~and manufacturers for full compliance by the year 2020~~ for a compliance rate of 95% by the year 2030.

...

Policy 1.5.6 The County shall provide coordination and assistance to all local municipalities, ~~the University of Florida and Santa Fe College and the local United States Postal Service~~ and institutions to maintain effective and efficient recycling programs.

Solid Waste Element Definitions

County Solid Waste System The collection, processing, and disposal of garbage, recycling, yard waste, and white goods at County operated or contracted facilities, or by County employees or contracted services.

CAPITAL IMPROVEMENTS ELEMENT

GOAL

PROVIDE AND MAINTAIN, IN A TIMELY AND EFFICIENT MANNER, ADEQUATE PUBLIC FACILITIES FOR BOTH EXISTING AND FUTURE POPULATIONS, CONSISTENT WITH AVAILABLE FINANCIAL RESOURCES.

OBJECTIVE 1.2

Alachua County shall define types of public facilities and establish the standards or guidelines for level of service (LOS) by facility type to be used in developing and updating the five year capital improvement program and the 2030 Multi-Modal Transportation Capital Improvement Program to implement this element.

Policy 1.2.1 Public facilities are classified in the following manner:

- (a) Category "A" public facilities are arterial and collector roads, bicycle facilities, pedestrian facilities, transit facilities, storm water management systems, solid waste, and recreation facilities owned and operated by the County, and are addressed in other elements of this Comprehensive Plan;

...

Policy 1.2.4 LOS standards for Category "A" and "B" public facilities shall be as follows:

...

**Alachua County Comprehensive Plan Update:
Draft Revisions to Goals, Objectives, Policies, and Maps
For Board of County Commissioners Meeting
December 6, 2018**

- (c) The level of service (LOS) standard for solid waste disposal, used as the basis for determining availability of disposal capacity to accommodate the demand generated by existing and new development in Alachua County, is at a minimum, at ~~0.73~~ 0.8 inbound tons per person per year at the Leveda Brown Environmental Park in 1997 2018 and thereafter.

Policy 1.2.5 Alachua County shall adopt LOS guidelines for Category "C" public facilities, and include those facilities in the CIP. These LOS guidelines are to be used for analysis and identification of Capital Improvement Project needs for these facilities to be included in the Capital Improvement Program. ~~These level of service guidelines shall be for advisory purposes only.~~ The LOS guidelines for Category "C" public facilities are the following:

- (a) Fire LOS guidelines are as follows:

~~(1) In the Urban Service Area, initial unit response LOS guideline is within 4 minutes for 80% of all emergency responses within a 12 month period. Fire suppression/ protection service level for all properties in the Urban Service Area shall be at the ISO (Insurance Service Office) Class Protection 4 or better. Land development regulations shall require that 100% of development shall provide water supply served by hydrants.~~

(2) In the Urban Cluster, initial unit response LOS guideline is within 6 minutes for 80% of all emergency responses within a 12 month period. Fire suppression /protection service level for all properties in the Urban Cluster shall be at the ISO (Insurance Service Office) Class Protection 6 or better. Land development regulations shall require that 100% of development shall provide water supply served by hydrants.

(3) In the rural area, initial unit response LOS guideline is within 12 minutes for 80% of all emergency responses within a 12 month period. Fire suppression/protection service level for all properties in the Rural Area shall be at the ISO (Insurance Service Office) Class Protection of <10. Development will provide adequate water supply for fire suppression and protection, and fire service compliant fire connections, required through land development regulations.

(4) The County shall periodically update the Alachua County Fire and Emergency Medical Services Service Master Plan and evaluate, including an evaluation of capital and related operational needs to meet these Fire LOS guidelines identified in this policy and consideration of service delivery benchmarks for Emergency Medical Services (EMS). ~~This~~ Updates of the Master Plan shall include identification of funding sources that could be established as part of a financially feasible plan to meet these LOS guidelines. ~~This update and adoption of a financially feasible plan~~ The Fire

**Alachua County Comprehensive Plan Update:
Draft Revisions to Goals, Objectives, Policies, and Maps
For Board of County Commissioners Meeting
December 6, 2018**

and Emergency Medical Services Master Plan shall serve as a basis for consideration of an amendment to the Comprehensive Plan to establish level of service standards for Fire Rescue services and Emergency Medical Services as part of the County’s concurrency management requirements.

...

Objective 1.6

Programming and funding of capital projects consistent with the Goals, Objectives, and Policies of the Comprehensive Plan and Future Land Use Map, to maintain adopted LOS standards, and/or meet other public facility needs, including equity objectives, not dictated by LOS standards.

Policy 1.6.14 Address disparities as identified in “Understanding Racial Inequity In Alachua County” (BEBR, 2018) as a factor in decisions on capital improvement projects.

Table 2. Public School Facilities Schedule of Capacity Projects

Reserved for future updates of the Public School Facilities Schedule of Capacity Projects as provided in the Alachua County School District 5-Year District Facilities Work Program; there are no funded capacity projects listed in the ~~2012-2013~~ 2018-2019 Work Program for Fiscal Years ~~2012-2016~~ 2018-2022.

Table 3. Recreation Facilities Schedule of Capital Improvements, FY 2011~~9~~ – FY 2015~~23~~

[Replace existing tables which cover the period FY 2011 to FY 2015 with the following tables for the period FY 2019 to FY 2023.]

Activity Based Recreation

Project Name and Description	FY 18/19	FY 19/20	FY 20/21	FY 21/22	FY 22/23	Total Project Cost FY 19-23
	Fiscal Year Funding					
Squirrel Ridge Park <i>Restroom</i>	\$194,043 (GF)					\$194,043
Squirrel Ridge Park <i>Shade Shelter</i>	\$102,463 (PIF)					\$102,463
Jonesville Park <i>Storage Building</i>	\$110,293 (PIF)					\$110,293
Jonesville Park	\$197,646					\$197,646

**Alachua County Comprehensive Plan Update:
Draft Revisions to Goals, Objectives, Policies, and Maps
For Board of County Commissioners Meeting
December 6, 2018**

<i>Restroom</i>	(PIF)					
Veterans Park	\$75,000	\$100,000	\$100,000			\$275,000
<i>Splash Pad</i>	(PIF)	(PIF)	(PIF)			

PIF = Park Impact Fees GF = General Fund

Table 3 (continued). Recreation Facilities Schedule of Capital Improvements, FY 2014-9 - FY 2015-23

Resource Based Recreation

Project Name & Description	FY 18/19	FY 19/20	FY 20/21	FY 21/22	FY 22/23	Total Project Cost FY19-23
Mill Creek Preserve <i>Educational signs</i>	\$3000 (GF/ACF/T)					\$3000
Sweetwater Preserve <i>Trailhead/parking area & stormwater pond</i>	\$129,000 (ACF/GF/G)					\$129,000
Barr Hammock Preserve <i>Trails, amenities, landing overlook, interpretive signs, boardwalk over Levy canal, Levy overlook.</i>		\$20,000 (ACF/GF/G)	\$70,000 (G/ACF)	\$51,000 (G/ACF)		\$141,000
Lake Alto Preserve <i>Tree Frog Trail boardwalk</i>					\$40,000 (GF)	\$40,000
Phifer Flatwoods Preserve <i>Turpentine Trail boardwalk, Phifer Additions trailhead</i>		\$40,000 (T/G)			\$5200 (T/G/GF)	\$45,200
Watermelon Pond <i>Trail head and viewing areas</i>	\$5,000 (ACF/GF)					\$5000
Turkey Creek Hammock <i>Develop parking area/trailhead, entrance, marsh overlook, fitness trail, Wildlife observation platform, boardwalk</i>	\$110,800 (ACF/GF/T)	\$5,000 (ACF/G/T)			\$200,000 (ACF/G/DON)	\$315,800
Four Creeks <i>Trailhead, parking, kiosk, signage</i>	\$30,000 (WSPP)					\$30,000
Buck Bay Flatwoods (Cox & Moore Tract)		\$13,900 (T,GF, ACF)				\$13,900

GF = General Fund ACF = Alachua County Forever G=Grant DON = Private Donation
WSPP = Wild Spaces Public Places Sales Tax T=Timber Revenue

Proposed additions are underlined
Proposed deletions are ~~struck through~~

**Alachua County Comprehensive Plan Update:
Draft Revisions to Goals, Objectives, Policies, and Maps
For Board of County Commissioners Meeting
December 6, 2018**

Note: In addition to the planned projects listed above, additional recreation projects will be identified and funded out of the Alachua County Wild Spaces Public Places (WSPP) voter-approved sales tax revenues.

ENERGY ELEMENT

GOAL

REDUCE GREENHOUSE GAS EMISSIONS AND FOSSIL FUEL CONSUMPTION; MITIGATE THE EFFECTS OF RISING ENERGY COSTS; AND PROMOTE THE LONG-TERM ECONOMIC SECURITY OF ALACHUA COUNTY THROUGH ENERGY CONSERVATION, ENERGY EFFICIENCY AND RENEWABLE ENERGY PRODUCTION.

STRATEGY

Priority 1

Practice energy conservation.

Priority 2

Maximize energy efficiency.

Priority 3

Promote and invest in renewable energy production.

5.0 COUNTY GOVERNMENT INITIATIVES

OBJECTIVE 5.1

Adopt and implement practices within Alachua County Government that contribute to the energy conservation goals of the Comprehensive Plan.

...

Policy 5.1.3 Alachua County shall develop a ~~Utility Savings Reinvestment account~~ Energy Conservation Investment Program (ECIP) using savings from conservation and efficiency enhancements to County facilities. These funds shall be reinvested in conservation enhancements through each year's capital improvements program.

**Alachua County Comprehensive Plan Update:
Draft Revisions to Goals, Objectives, Policies, and Maps
For Board of County Commissioners Meeting
December 6, 2018**

Policy 5.1.4 The County shall consider developing and implementing a plan to significantly reduce fossil fuel use in the County fleet by 20% from 2010 levels by the year 2020 for the transportation of waste to the landfill by creating a zero waste initiative in coordination with the municipalities and University of Florida.

OBJECTIVE 5.2

Increase the use of renewable energy in County government.

Policy 5.2.1 Alachua County shall purchase or produce renewable energy for at least ~~10%~~ 50% of total County government (cumulative) consumption by ~~2015, and 20%~~ by 2020 2045.

Policy 5.2.2 The County shall incorporate renewable energy production into County facilities where appropriate.

Policy 5.2.3 Pursue funding to develop alternative energy facilities that would be capable of producing energy from ~~anaerobic digestion,~~ solar energy, biodiesel or other forms of sustainable energy resources.

6.0 LOCAL FOOD PRODUCTION AND PROCESSING

OBJECTIVE 6.1

Maximize local resource & energy-efficient food production and processing within the County's local foodshed. A robust local food system provides the following potential benefits to the community:

- maintaining agricultural land and supporting rural land stewardship,
- protecting incomes for family farms and providing local employment,
- stimulating local food industries and enhancing agritourism,
- protecting public health by improving food safety issues at harvesting, washing, shipping and distribution, and increasing the nutritional value of food,
- increasing food security and resiliency through providing affordable local food, protecting agricultural knowledge and traditions, and supporting biodiversity in our food crops, and
- reducing local energy consumption and carbon footprint.

Policy 6.1.1 Partner with community groups and other local governments in the region to delineate and promote a local foodshed for the development of a sustainable local food system.
Alachua County will participate in a study to establish baseline measures and measurable targets towards the increase of local food use by Alachua County institutions, including:

**Alachua County Comprehensive Plan Update:
Draft Revisions to Goals, Objectives, Policies, and Maps
For Board of County Commissioners Meeting
December 6, 2018**

- (a) Identify and partner with relevant agencies and organizations, such as the City of Gainesville, area retailers, UF IFAS Extension, Florida Farm Bureau, Florida Organic Growers, UF Field to Fork, Working Food, Alachua County School Board, UF, UF Health, and SFC.
- (b) Identify components of the local food economy, such as appropriate food shed, distribution system, and local food segment of retail purchases. Set target goals and develop methodology to identify and track local food use by Alachua County institutions.

Policy 6.1.2 Work with local governments, institutions and community groups within the defined foodshed area to determine processing facilities and other food-related infrastructure needed to process locally grown foods.

Policy 6.1.3 The land development regulations shall permit and encourage dispersed, small scale agricultural production and sale direct to the public.

Policy 6.1.4 Increase support for farmers' markets through partnerships with local governments, institutions and community groups.

OBJECTIVE 6.2

Increase the use of locally grown and/or processed foods in County facilities where food is provided and encourage other local government facilities to do the same.

Policy 6.2.1 Work with the Alachua County Jail to develop a plan for an agricultural program to grow food onsite and teach sustainable farming methods.

Policy 6.2.2 Alachua County shall work to facilitate partnerships between local farmers and local government organizations such as the Alachua County School Board to implement the 2009 Alachua County Hunger Abatement Plan and future updates and provide healthy, fresh foods in local schools and other institutions.

8.0 SOLID WASTE

Objective 8.1

Reduce the solid waste stream generated by Alachua County.

...

Policy 8.1.2 Achieve a diversion rate from disposal of 40% by December 31, 2012; 50% by December 31, 2014; 60% by December 31, 2016, 70% by December 31, 2018; and 75% by December 31, 2020. Special waste being recycled such as tires, appliances, yard trash and construction and demolition debris will be included. ~~The calculation will be made annually by dividing the tons recycled by the sum of tons disposed plus tons recycled~~ The calculation will be made in accordance with the accepted methodology of the State of

**Alachua County Comprehensive Plan Update:
Draft Revisions to Goals, Objectives, Policies, and Maps
For Board of County Commissioners Meeting
December 6, 2018**

Florida Department of Environmental Protection. In addition to changes in total waste diversion, the County shall track and report on indicators of improvements in waste diversion such as percentage of businesses in compliance with the mandatory commercial recycling program, percentage of residential users voluntarily recycling, rates of recycled vs. disposed waste collected at rural collection centers, or similar measures.

9.0 EDUCATION AND PUBLIC INFORMATION

OBJECTIVE 9.1

Provide educational information to the public to promote and encourage energy conservation, energy-efficiency and renewable energy use.

...

Policy 9.1.3 Partner with IFAS, local farmers, and community groups to develop and implement educational strategies on the benefits of purchasing locally grown and/or processed foods.

(a) County Extension, in partnership with Florida Department of Agriculture, shall provide GAP [Good Agricultural Practices] and BMP training for county farmers to facilitate crop production in partnership with Florida Department of Agriculture.

(b) Focus efforts of IFAS/County Extension Ag education and Master Gardener program to increase participation of at-risk youth

(c) Alachua County Extension will work with government agencies, businesses, County departments, schools, farmers, organizations actively working with pollinators, and the public to increase both food resources and suitable nesting habitat for pollinator species. Approaches may include:

- (1) Adopting and implementing policies that promote pollinator health and habitat;
- (2) Exploring alterations to current County land management practices that improve habitat of pollinators on County-owned land;
- (3) Educating the general public and County departments on the issue of pollinator decline and strategies that can be implemented to improve pollinator health and habitat; and
- (4) Creating and fostering partnerships that assist in the advancement of pollinator health at the local, regional, and federal levels.

**Alachua County Comprehensive Plan Update:
Draft Revisions to Goals, Objectives, Policies, and Maps
For Board of County Commissioners Meeting
December 6, 2018**

**Alachua County Comprehensive Plan Update:
Draft Revisions to Goals, Objectives, Policies, and Maps
For Board of County Commissioners Meeting
December 6, 2018**

INTERGOVERNMENTAL COORDINATION ELEMENT

OBJECTIVE 1.1

Coordinate the Comprehensive Plan, the plans of the school board, other units of local government providing services, but not having regulatory authority over the use of land, and with the comprehensive plans of municipalities within the County, and adjacent counties.

Policy 1.1.1 ~~In accordance with the Alachua County Boundary Adjustment Act, Alachua County shall adopt a statement for each proposed reserve area for each municipality within the County stating which comprehensive plan and set of land use regulations shall apply within the reserve area until that area is annexed. The Boundary Adjustment Act shall be used with participating municipalities as a mechanism for addressing joint planning issues, particularly for the purpose of annexation, municipal incorporation, and joint infrastructure areas.~~ Pursuant to Section 1.5 of the Alachua County Charter, the County and any municipality may enter into an interlocal agreement to provide for joint planning in portions of the unincorporated area not located within any area designated pursuant to general or special law as a reserve for annexation by another municipality or in portions of the area within ~~the~~ such municipality.

Policy 1.1.2 ~~Mechanisms to supplement the Boundary Adjustment Act, such as additional~~ Alachua County shall consider the use of joint planning agreements and joint processes with municipalities for review of annexations and development proposals shall be considered for inclusion as part of the inter-local agreements to implement this element.

Policy 1.1.3 ~~Alachua County shall use the informal mediation process of the North Central Florida Regional Planning Council to resolve comprehensive planning issues with governmental units in the same regional planning council jurisdiction.~~

OBJECTIVE 4.1

Coordinate with all municipalities on annexations and related service delivery and planning issues. ~~in the implementation of the Boundary Adjustment Act to set forth reserve areas and resolve annexation issues.~~

Policy 4.1.1 Annexation in Alachua County shall be in accordance with Chapter 171 of Florida Statutes.

Policy 4.1.2 Alachua County shall coordinate with all municipalities to ensure that proposed annexations meet the requirements of Chapter 171, Part I, Florida Statutes, and to ensure the efficient provision of public services to County residents.

Policy 4.1.3 Alachua County shall consider the use of Interlocal Service Boundary Agreements pursuant to Chapter 171, Part II, Florida Statutes to jointly address annexation and service delivery issues in coordination with the municipalities in the County.

**Alachua County Comprehensive Plan Update:
Draft Revisions to Goals, Objectives, Policies, and Maps
For Board of County Commissioners Meeting
December 6, 2018**

~~**Policy 4.1.1** The updated reserve areas and extra territorial areas established with each of the municipalities under the Boundary Adjustment Act are hereby adopted and incorporated into this element as Map 1. The reserve area designations are accompanied by statements reflecting agreement between the County and each municipality addressing:~~

~~(a) Whether the comprehensive plan and land use regulations of the County or the municipality for which the reserve area is designated shall apply prior to its being annexed.~~

~~(b) Whether the municipality or the County shall enforce and administer the comprehensive plan and how proceeds from fines and fees charged pursuant to such enforcement will be distributed.~~

~~(c) Which services the County shall provide and which services the municipality shall provide in the reserve area, both before and after annexation, and how these services will be financed.~~

~~(d) Any other matters related to the reserve area designation on which there is agreement. The designations and documentation shall be adopted as comprehensive plan amendments to this Element and other portions of the Comprehensive Plan to be consistent with the reserve area descriptions.~~

~~(e) Annexation may be implemented within the designated reserve areas in accordance with the Statements of Services for each reserve area and the Alachua County Boundary Adjustment Act.~~

~~**Policy 4.1.2** Every five (5) years from adoption of a reserve area, Alachua County shall review each reserve area map and statements and participate in an amendment process, should either party desire adjustment of the reserve area boundaries.~~

OBJECTIVE 5.1

Coordinate the provision of services and information.

Policy 5.1.7 Alachua County shall continue to pursue developing and implementing inter-local agreements with municipalities on the following issues:

(a) fire suppression services

(b) law enforcement

(c) emergency medical services

(d) animal control

(e) building inspection services

(f) coordination of capital plans for centralized potable water and wastewater systems-

(g) multi-modal approaches to transportation planning consistent with the Transportation Mobility Element-

**Alachua County Comprehensive Plan Update:
Draft Revisions to Goals, Objectives, Policies, and Maps
For Board of County Commissioners Meeting
December 6, 2018**

- (h) solid waste collection services
- (i) planning, zoning, and code enforcement services
- (j) social services.

Policy 5.1.8 The County shall coordinate with municipalities and other providers of local public services and facilities in assessing opportunities for consolidation in the delivery of services where determined to be efficient and cost effective. *[Existing Policies 5.1.8 through 5.1.11 to be renumbered.]*

OBJECTIVE 8.1

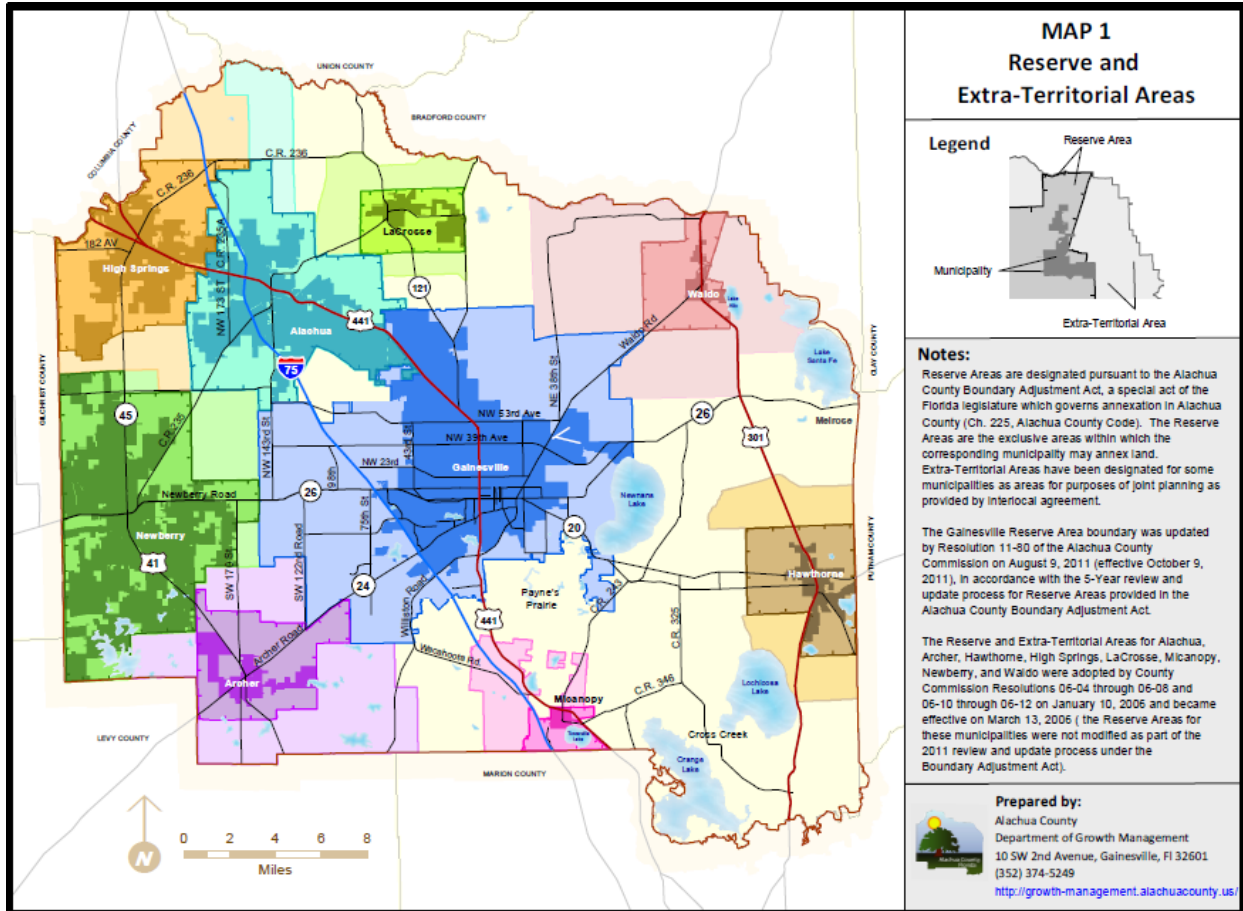
Coordinate the protection of the environment.

Policy 8.1.1 Alachua County shall coordinate the environmental protection of land, air, and water with the appropriate agencies and jurisdictions for the benefit of people, wildlife, and plants.

- (a) The County shall coordinate with ~~the Countywide Visioning and Planning Committee or similar entity, Non-governmental organizations, State, and federal government agencies,~~ municipalities and adjacent counties to extend ecologically functional linkages between ecological core areas on the Critical Ecological Corridors Map in accordance with Policy 6.3.2 of the Conservation and Open Space Element.
- ~~(b) The County shall pursue development of an interdisciplinary team to address protection of strategic ecosystems and other natural resources within each city's reserve area.~~
- (c) The County shall ~~encourage establishing a subcommittee of the Countywide Visioning and Planning Committee (CVPC) or similar entity to~~ coordinate with municipalities to implement relevant guiding principles and action strategies in the CVPC Conceptual Plan Objectives to protect natural resources countywide. ~~Such a subcommittee shall consider inclusion of environmental analysis and environmental protection standards/requirements in the Boundary Adjustment Act (BAA) or related interlocal agreements.~~

**Alachua County Comprehensive Plan Update:
Draft Revisions to Goals, Objectives, Policies, and Maps
For Board of County Commissioners Meeting
December 6, 2018**

Map 1. Alachua County Reserve Areas and Extra-Territorial Areas *Map to be deleted*



**Alachua County Comprehensive Plan Update:
Draft Revisions to Goals, Objectives, Policies, and Maps
For Board of County Commissioners Meeting
December 6, 2018**

ECONOMIC ELEMENT

GOAL 1

PROMOTE ~~ENHANCE~~ THE ECONOMIC PROSPERITY OF ALL CITIZENS OF ALACHUA COUNTY, ADDRESS ECONOMIC EQUITY, AND EXPAND AND DIVERSIFY THE COUNTY'S TAX BASE.

OBJECTIVE 1.1 - ECONOMIC DIVERSITY AND SUSTAINABILITY

Diversify the County's economy. Achieve a diversified and sustainable economic base in Alachua County to minimize the vulnerability of the local economy and to provide economic opportunity for all segments of the population that shall include strategies to achieve the elimination of disparities identified in the "Understanding Racial Inequity In Alachua County" Report (2018) and attract and retain high-quality employers and employees within the workforce.

- Policy 1.1.1** Alachua County shall promote the recruitment and expansion of targeted industries that are either growing, high-skill, high wage areas of desired growth, or contribute to regional economic diversification. These targeted industries include, but are not limited to: logistics, and distribution; building component design and manufacturing; aviation services and products, bio-fuels and energy; healthcare services and projects business services; communication services; medical and pharmaceuticals, including biotech; technology driven manufacturing; electronics and other electrical equipment; regional or corporate headquarters; information technology; research and development; eco-tourism; multimedia productions.
- Policy 1.1.2** Alachua County shall promote economic development efforts that build on and complement existing commercial, industrial and agricultural assets in the local economic system.
- Policy 1.1.3** Alachua County shall implement the goals of the Alachua County Visitors and Convention Bureau to promote North Central Florida as a tourism destination through events, advertising and accessible recreation sites. The County shall promote tourism, including eco-tourism, agritourism, heritage tourism and tourism-related businesses which complement the County's environmental, social and economic quality.
- Policy 1.1.4** Alachua County shall promote partnerships with local arts/cultural organizations and sports organizations, and promote unique recreational tourism opportunities including agritourism, paddling trails, the African American Heritage Trail and the Old Florida Heritage Highway master plan.
- Policy 1.1.5** Alachua County shall expand its economic base by creating an environment which encourages job skills training, education and entrepreneurship through strong

**Alachua County Comprehensive Plan Update:
Draft Revisions to Goals, Objectives, Policies, and Maps
For Board of County Commissioners Meeting
December 6, 2018**

partnerships with CareerSource North Central Florida ~~FloridaWorks~~, the University of Florida, Santa Fe College, the School Board of Alachua County, YouthBuild/Institute for Workforce Innovation, and related organizations that provide education and training to the community.

Policy 1.1.6 Consistent with Energy Element Objective 2.2 and Future Land Use Element Objectives 6.1 and 6.2, Alachua County shall encourage the location and development of energy conservation, alternative energy, reuse/recycling based industry and sustainable food production and processing businesses and industry clusters in order to achieve a higher level of sustainable economic development.

- (a) Alachua County shall promote a Recycling Market Development Zone (RMDZ)/Resource Recovery industrial park focused on sustainable production of goods or materials that may include recycled content or resources collected by the County curbside recycling program or otherwise removed from the County's waste stream.
- (b) Consistent with Future Land Use Element Policy 6.1.4, industries and business sectors that create a market for local agricultural products shall be encouraged to locate or expand existing local business in Alachua County.
- (c) Highlight local specialty foods and farmers markets as part of the County's tourism marketing efforts.

Policy 1.1.7 Alachua County shall establish and maintain land uses and zoning regulations that will facilitate telecommuting, home based occupations, mixed-use centers and other components that are helpful to job creation and retention, including the targeted industries listed in Policy 1.1.1.

Policy 1.1.8 Alachua County shall encourage and allow flexibility in the development of "home-based businesses" consistent with public health and safety concerns. Home-based businesses are defined as a business or commercial activity conducted on a residential property which is accessory to the residential use of that property. The land development regulations shall include thresholds to allow for approval of small-scale rural home-based businesses through administrative review and other mechanisms appropriate to the size, intensity, and impacts of such businesses.

Policy 1.1.9 Consistent with Energy Element Policy 3.1.4, Alachua County shall promote redevelopment and infill within the Urban Cluster. Recognizing that such redevelopment and infill is an efficient use of land, infrastructure, energy resources, and existing public services, redevelopment of existing sites and buildings shall be encouraged. The County will encourage redevelopment by establishing strategies, such as mixed-use and increased densities, in the goals, objectives, and policies of the Future Land Use Element.

**Alachua County Comprehensive Plan Update:
Draft Revisions to Goals, Objectives, Policies, and Maps
For Board of County Commissioners Meeting
December 6, 2018**

Policy 1.1.10 Recognizing constraints such as location, site access, existing utility infrastructure, or other conditions that may constrain redevelopment in compliance with generally applicable standards, the County shall establish criteria for sites where it would be appropriate to facilitate redevelopment of existing properties based on alternative standards.

OBJECTIVE 1.2 - ECONOMIC DEVELOPMENT STRATEGY

Provide a comprehensive economic development strategy for Alachua County.

Policy 1.2.1 Alachua County shall encourage the allocation of resources for the retention, expansion and development of local business and the recruitment of businesses and industries. Priority shall be given to the retention, expansion and development of local businesses. This strategy shall include support for efforts to provide expanded opportunities for education, including jobs-related skills training, to increase workforce participation and better employment opportunities for populations that are experiencing economic disparities identified in the “Understanding Racial Inequity In Alachua County” Report (2018).

Policy 1.2.2 Alachua County shall coordinate its economic development activities with its municipalities and the appropriate federal, state, regional and local agencies including Florida Works, the University of Florida, Santa Fe College, the School Board of Alachua County and economic development organizations.

Policy 1.2.3 Alachua County shall pursue an integrated approach to economic development that includes citizen input and addresses the needs of the County. The County shall support and coordinate the activities of the County’s Economic Development Advisory Committee in the development and implementation and periodic update of the strategic plan for county-wide economic development. This integrated approach shall include components that address the disparities identified in the “Understanding Racial Inequity In Alachua County” Report (2018).

Policy 1.2.4 Alachua County may elect to implement all or part of this element through a contractual agreement with another agency or agencies engaged in the business of economic development. Specific responsibilities shall be set forth in such an agreement to ensure compliance with this plan.

Policy 1.2.5 ~~The Alachua County department or the agency contracted to implement this plan shall~~ collaborate with local economic development organizations to develop an annual a program to retain, expand and develop local businesses. This program shall also explore opportunities for attracting appropriate businesses and industries. This program shall encourage the availability of economic opportunities for all segments of the community, monitor and reduce the extent of underemployment in the community and address

**Alachua County Comprehensive Plan Update:
Draft Revisions to Goals, Objectives, Policies, and Maps
For Board of County Commissioners Meeting
December 6, 2018**

economic disparities, recruit businesses and industries that will utilize and train the local labor force as their employees, and retain existing talented workforce.

This program shall:

- (a) Provide current informational material to prospective businesses and industries that includes but is not limited to:
 - (1) An inventory of available commercial and industrial land and vacant buildings.
 - (2) Analysis of labor force characteristics and needs.
 - (3) Availability and cost of electricity, water, sewer, natural gas, broadband communications and essential infrastructure, and any programs or incentives to reduce these costs.
 - (4) Analysis of community characteristics (e.g., quality of public schools and cultural amenities).
 - (5) Provide site location and development review assistance.
- (b) Advise the Local Planning Agency and the Board of County Commissioners on economic development issues that affect comprehensive planning and land development regulation activities.
- (c) Participate in the review of grant proposals relating to economic development.
- (d) Provide a review of barriers to employment and economic prosperity (e.g., transportation, child-care, education, employability and health-care) and identify specific ways to overcome those barriers.

Policy 1.2.6 Alachua County shall pursue incentive programs such as Tax Increment Financing (TIF), Community Development Block Grant (CDBG), Qualified Target Industry Tax Refund program, an impact fee financing fund, a revolving capital loan fund, and land acquisition that will allow businesses and employers to invest in retaining and creating high wage job opportunities and value-added businesses. Alachua County shall study economic incentives utilized by various communities and seek to implement those incentives that are appropriate for Alachua County.

- (a) In order to determine whether incentives are provided to a project, the County shall conduct a cost/benefit assessment of any financial incentives proposed to be provided by the County to support the retention, expansion or development of local business or to attract new business. Such an assessment shall factor in the financial costs as well as the social equity, contributions toward the elimination of racial or economic disparities, and environmental impacts of proposed incentives.

**Alachua County Comprehensive Plan Update:
Draft Revisions to Goals, Objectives, Policies, and Maps
For Board of County Commissioners Meeting
December 6, 2018**

- Policy 1.2.7** Alachua County, ~~or the agency contracted to implement its economic development strategy,~~ shall establish criteria for ranking future economic development proposals/initiatives and requests for funding from economic development organizations based on their contributions to sustainable economic development and to the extent consistent with legally mandated program criteria, contributions towards the elimination of disparities.
- Policy 1.2.8** Priority should be given to businesses and industries that would contribute to the flow of income into the local economy through the sale of goods and services outside of the County, or that would produce goods and services that would otherwise be imported into the County and such firms should be encouraged to locate or expand existing local business in Alachua County.
- Policy 1.2.9** Alachua County recognizes Research and Technology Parks as valuable economic assets to the community that are particularly appropriate in transit oriented developments and mixed-use activity centers. Development of such parks and other similar ventures through expansion, development and recruitment of appropriate businesses and industries shall be given high priority.
- Policy 1.2.10** Alachua County recognizes the business incubators such as the Gainesville Technology Enterprise Center (GTEC) as valuable economic assets to the community and shall encourage the development of additional incubators and similar ventures through expansion, development and recruitment of appropriate businesses and industries, where consistent with the Future Land Use Element. The County shall strive to retain in the community the businesses that are established and grow from the incubators by assuring that an adequate amount of land properly designated for manufacturing and commerce activities related to the incubated enterprises is available.
- Policy 1.2.11** Alachua County recognizes the value of industries related to the development of energy conservation, alternative energy, reuse/recycling based products and sustainable food production and processing and encourages the location of these businesses and industry clusters consistent with Energy Element Objective 2.1. These industries shall be given high priority.
- Policy 1.2.12** Alachua County shall promote industries and businesses that support cultural, nature-based and/or eco-tourism activities.
- Policy 1.2.13** Alachua County shall support the development and expansion of small and minority-owned businesses as a means to address economic prosperity and racial and economic disparities.

**Alachua County Comprehensive Plan Update:
Draft Revisions to Goals, Objectives, Policies, and Maps
For Board of County Commissioners Meeting
December 6, 2018**

Policy 1.2.14 To further support local, ~~and~~ minority-owned, and women-owned business efforts, Alachua County's purchasing policies shall provide the maximum opportunity for increased participation by local, small, ~~and~~ minority-owned, and women-owned businesses. Criteria for local businesses should include employment of the local workforce by the business within Alachua County.

Policy 1.2.15 ~~Alachua County shall maintain a system for registering all businesses operating in the County.~~

Policy 1.2.16 Alachua County shall promote methods of financing infrastructure and public services that will minimize costs to current and future taxpayers, such as bond issues when the market is favorable.

Policy 1.2.17 Alachua County shall initiate efforts and support the efforts of other agencies to obtain grant funding (e.g., Community Development Block Grants) and other sources of funds designed to assist local economic development projects.

Policy 1.2.18 A comprehensive ~~annual~~ "State of Alachua County's Economy" report shall be presented to the Board of County Commissioners. This document shall review the economic indicators of the local economy and the impact of economic development efforts on the goals and objectives outlined in this plan. This report shall be developed by the County in coordination with local economic development entities ~~such as the Chamber of Commerce/CEO,~~ with input from the appropriate County advisory committees such as the Economic Development Advisory Committee. This report shall include items such as:
at a minimum:

A review of the ~~annual~~ economic development program for Alachua County as it relates to the objectives and policies set forth in this Economic Element, including activities established to address economic opportunity and elimination of disparities as identified in the "Understanding Racial Inequity In Alachua County" Report (2018).

The County shall also monitor:

- (a) Recommendations concerning identified infrastructure needs to support economic development efforts; this information shall be considered as part of the annual update of the Capital Improvement Program.
- (b) A report of existing business expansions and new business starts within the County.
- (c) A report on businesses attracted to the County through the recruitment efforts of Alachua County.
- (d) A report on vocational training opportunities, including identification of needed job skills reported by businesses during the recruitment or expansion process.

**Alachua County Comprehensive Plan Update:
Draft Revisions to Goals, Objectives, Policies, and Maps
For Board of County Commissioners Meeting
December 6, 2018**

- (e) The number of new jobs created.
- (f) A report on the costs and benefits to the County, as well as the effectiveness, of any incentives provided by the County to support the retention or expansion of existing businesses or to develop or attract new business.
- (g) A report on the effectiveness of the economic development program in improving the economic well-being of the unemployed poor, including those not covered by general unemployment statistics such as those measures established to address economic opportunity and elimination of disparities identified in the “Understanding Racial Inequity In Alachua County” Report (2018).

OBJECTIVE 1.3 - ENVIRONMENTAL QUALITY AND RESOURCE CONSERVATION

The County shall evaluate and ensure that the types of new or the expansion of existing businesses and industries developing and locating in Alachua County contribute to maintaining a clean environment (air, water, soil) including measures to increase energy conservation, reduce greenhouse gas production, consistent with Energy Element Objectives 2.1 and 2.2 and Conservation and Open Space Policy 4.1.2, and are located in areas with suitable infrastructure and compatible land uses. Each employer shall be a good neighbor by preventing adverse impacts on the environment with emphasis given to the Conservation and Open Space Element of the Comprehensive Plan.

Policy 1.3.1 Alachua County shall adopt objective standards for timely decisions on applications for development approval for business and industrial uses that correspond to Alachua County’s Comprehensive Plan and Zoning Ordinances. Such standards and procedures shall be reviewed on an annual basis to determine their effectiveness in facilitating the permitting process and protecting the environment. The County shall develop and maintain, as a mechanism for expediting the development review process, an inventory of suitable potential business locations which would include information on the infrastructure available and the environmental conditions of the site. This inventory may be contained within or accessed from the County’s Geographic Information Systems database and public applications and viewers. The County may coordinate with the municipalities to include their suitable location information within this inventory.

Policy 1.3.2 Alachua County shall encourage the development and expansion of business and industry in appropriate locations that make efficient use of existing public services and infrastructure.

Policy 1.3.3 Industries or businesses generating hazardous wastes shall follow procedures and guidelines for the use, storage, and disposal of such materials as set forth by ordinance and in accordance with the Solid Waste Element and Objective 5.7 of the Conservation and Open Space Element of this plan.

**Alachua County Comprehensive Plan Update:
Draft Revisions to Goals, Objectives, Policies, and Maps
For Board of County Commissioners Meeting
December 6, 2018**

OBJECTIVE 1.4 - EDUCATION AND EMPLOYMENT

Coordinate educational, vocational, and technical training opportunities with the needs of new and existing employers. In collaboration with other institutions, create an environment in which all residents may become as self-sufficient as possible, through educational and employment opportunities with a goal to address economic opportunity and eliminate disparities identified in the “Understanding Racial Inequity In Alachua County” Report (2018).

Policy 1.4.1 Alachua County shall assist in the coordination of educational, professional, technical, and vocational training of the labor force with the needs of businesses and industries. This assistance shall include, but not be limited to, disseminating information about the vocational and other programs available through Florida Works, Santa Fe College, the School Board of Alachua County, the Chamber of Commerce/CEO and the University of Florida to prospective businesses and industries and disseminating statistical data on population and employment relating to labor markets for use by potential employers and vocational programs.

Policy 1.4.2 Alachua County shall foster collaboration among the workforce development organizations and the educational institutions, the employees and employers to ensure that the skills of the County’s labor force closely ~~match~~ align with the demand for labor force needs of employers and also to enhance the skills needed to improve the economic well-being and opportunity for all population segments within Alachua County.

Policy 1.4.3 Alachua County shall, as referenced in the County’s Strategic Plan for Sustainable Economic Development, collaborate with local workforce development organizations and educational institutions to expand vocational skills training and provide entrepreneurial opportunities for students. This collaboration shall include goals to prepare students for post-secondary employment in such areas as special skills training, targeted industries training and vocational skills training and internships, in collaboration with Florida Works, Santa Fe College, the School Board, the University of Florida, the business community and other agencies. Priority should be given to those locations and populations that have the highest indicators of disparities with respect to economic well-being identified in reports such as the “Understanding Racial Inequity In Alachua County” Report (2018).

Policy 1.4.4 Assist startup companies and encourage business retention through support of incubators consistent with Policy 1.2.10 and workforce education/training initiatives.

OBJECTIVE 1.5 - EXPAND ECONOMIC OPPORTUNITIES AND REDUCE POVERTY

Provide sustainable economic opportunities for all segments of Alachua County with a goal to eliminate disparities identified in the “Understanding Racial Inequity In Alachua County” Report (2018). Particular emphasis shall be given to activities which increase economic opportunities for persons at or near the poverty level and to activities which redevelop economically distressed and under-utilized areas. Alachua County shall utilize the following indicators:

**Alachua County Comprehensive Plan Update:
Draft Revisions to Goals, Objectives, Policies, and Maps
For Board of County Commissioners Meeting
December 6, 2018**

- a. per capita incomes for Alachua County.
- b. percentage of persons living at or below the poverty level.
- c. unemployment rates.

- Policy 1.5.1** Alachua County shall support existing businesses and encourage new business development in economically distressed areas of the County by coordinating with other economic development initiatives at the local, state, or regional level. In particular CareerSource NCF should be engaged as a partner in coordinating job expansion initiatives.
- Policy 1.5.2** The County shall make information available to the community on potential incentives such as reduced impact and/or mobility fees, streamlined permitting requirements for redevelopment within the Urban Cluster, and financial incentives available at the state and federal level for redevelopment of brownfield sites.
- Policy 1.5.3** The County shall pursue funding opportunities, including grants and other funding sources, for the extension of essential infrastructure to encourage development or redevelopment in specific economically distressed areas identified in the “Understanding Racial Inequity In Alachua County” Report (2018).
- Policy 1.5.4** Businesses and industries that meet the demands of the existing labor force by providing employment opportunities and equitable salaries shall be given a high priority in recruitment efforts and in provision of support for expansion of existing local business.
- Policy 1.5.5** Businesses and industries that are willing to participate in the training of skilled and unskilled workers through the ~~local Workforce Investment Act (WIA)~~ Workforce Innovation and Opportunity Act (WIOA) and/or other similar programs, shall be given a high priority in recruitment efforts and strongly encouraged to locate in Alachua County, and in provision of support for expansion of existing business.
- Policy 1.5.6** Alachua County shall support and encourage the development of public/private partnerships which assist small and minority-owned businesses that may otherwise not have access to adequate start-up capital.
- Policy 1.5.7** Alachua County shall support Welfare Transition Program employment/training projects in the County.
- Policy 1.5.8** Alachua County shall collaborate with local businesses and organizations, including builders, developers, contractors and labor unions, to create or support programs that enhance apprenticeship opportunities for vocational trades as part of the efforts to achieve economic equity. Recognizing the importance of apprenticeship programs in workforce development, Alachua County shall explore adding consideration of employer apprenticeship programs as a factor to be included in its purchasing policies.

**Alachua County Comprehensive Plan Update:
Draft Revisions to Goals, Objectives, Policies, and Maps
For Board of County Commissioners Meeting
December 6, 2018**

Policy 1.5.9 Alachua County shall support the development of micro-enterprises and small businesses by coordinating with other economic development initiatives.

Policy 1.5.10 Alachua County shall strive to compensate its employees with a combination of wages and benefits needed to cover the costs of life's basics, including shelter, food, clothing, utilities, transportation, child care and health care and is based on economic conditions of North Central Florida.

Policy 1.5.11 Alachua County shall promote affordable, diverse housing choices throughout the community to ~~enhance the viability of the workforce~~ to meet the needs of the workforce.

OBJECTIVE 1.6 - LIVABLE COMMUNITIES

Create livable communities that are attractive to diverse populations and new economic development opportunities.

Policy 1.6.1 The County shall encourage expanded and new businesses to locate in well-designed, compact mixed-use communities as encouraged in the Future Land Use Element.

Policy 1.6.2 The County shall promote reduced work to home commuting distances through encouragement of Traditional Neighborhood and Transit Oriented Developments and compact, mixed-use Activity Centers.

Policy 1.6.3 The Land Development Regulations shall include standards to ensure that new and expanded businesses provide for the health of the community by providing access to bicycle and pedestrian transportation facilities as well as roadways.

PUBLIC SCHOOL FACILITIES ELEMENT

Policy 2.3.2 Criteria for School Concurrency Service Areas

SCSAs shall be established to maximize available school capacity and make efficient use of new and existing public schools in accordance with the LOS standards, taking into account minimization of transportation costs, limitations on maximum student travel times, the effect of court approved desegregation plans, and recognition of the capacity commitments resulting from the development approvals by the local governments within Alachua County.

SCSA boundaries shall consider the relationship of school facilities to the communities they serve ~~including reserve area designations and extra-territorial areas established under the "Alachua County Boundary Adjustment Act"~~ and the effect of changing development trends.

~~**Alachua County Boundary Adjustment Act** — The special act of the Florida Legislature addressing annexations and intergovernmental coordination on planning for annexations in Alachua County. [Codified at Chapter 225 of the Alachua County Code of Ordinances]~~

**Alachua County Comprehensive Plan Update:
Draft Revisions to Goals, Objectives, Policies, and Maps
For Board of County Commissioners Meeting
December 6, 2018**

OBJECTIVE 3.7 - COORDINATE SUPPORTING INFRASTRUCTURE

The County shall coordinate with the SBAC plans for supporting infrastructure.

Policy 3.7.1 Coordination of Planned Improvements

As part of the annual review and update of the Capital Improvements Element, the County shall consider infrastructure required to support new school facilities.

Policy 3.7.2 Address Disparities in Public School Facilities

The County shall review the School Board’s annual Five Year Work Program and Educational Plant Survey to ensure that adequate school building conditions and design are provided districtwide, recognizing that the conditions of the physical learning environment are related to the equitable treatment of students.

OBJECTIVE 4.4 - SCHOOL SITE SELECTION, EXPANSIONS AND CLOSURES

The County, in conjunction with the SBAC, shall implement an effective and equitable process for identification and selection of school sites and for the review of significant expansions and closures.

COMMUNITY HEALTH ELEMENT

GOAL

PRESERVE THE HEALTH OF ALACHUA COUNTY RESIDENTS AND PROMOTE HEALTH IN ALL POLICIES AND SERVICE INITIATIVES AFFECTING ALL ASPECTS OF THE BUILT ENVIRONMENT, BY FACILITATING HEALTH CARE DELIVERY, IMPROVING THE EQUITY AND LIVABILITY OF THE COMMUNITY, AND PROVIDING ALL ALACHUA COUNTY RESIDENTS OPPORTUNITIES FOR ACTIVE LIVING.

OBJECTIVE 1.1

Promote coordination among local health systems and entities.

Policy 1.1.1 Alachua County will promote and support community health and wellness through policy coordination with national, state and local health programs and the local provision of health services, including coordination with municipalities, with the County Health Department, Alachua County Fire Rescue, higher education institutions, ~~UF~~, School Board of Alachua County (SBAC), and other community based health care providers including but not limited to safety net providers. Develop ongoing channels for cross-department collaboration, including interdepartmental task forces, cross-sector trainings, and formal and ad-hoc working groups; coordinate Plan implementation with all relevant departments.

**Alachua County Comprehensive Plan Update:
Draft Revisions to Goals, Objectives, Policies, and Maps
For Board of County Commissioners Meeting
December 6, 2018**

- Policy 1.1.2** Promote co-location of health programs and services, particularly in underserved areas and in Transit Oriented Development areas, thru county facilities project plans and including incentives in community funding programs. Alachua County will support and promote equitable access to health care services and the safety net system for the County's underserved population with transportation systems and transportation-assistance programs that enable low-income residents to access comprehensive health care including mental health, dental health and primary care.
- Policy 1.1.3** Utilize the Health Needs Assessment [HNA] and other data to identify areas in need of facilities to meet such needs as a community federally qualified health centers to provide outpatient medical, dental, and mental health services for low-income populations and other special populations in need; based on this analysis assist with grant efforts to obtain adequate funding.
- Policy 1.1.4** Planning for public health clinics should include provision of complementary services, such as mental health, dental health, maternal health, OB/Gyn services providing Well Child medical care and related social services.
- Policy 1.1.5** Promote coordination among providers of transitional housing and transportation assistance with health care service providers to address special health needs of the homeless and the transportation disadvantaged upon release from hospital.
- Policy 1.1.6** The Future Land Use Element shall include provisions in land use categories for mixed uses to allow co-location for senior housing, transitional housing, nursing homes, assisted living facilities and group homes for special needs population in proximity to health services.
- Policy 1.1.7** Alachua County and community based health care providers shall pursue grant funding to ensure evidence-based health promotion, reproductive health, community paramedicine, and chronic disease self-management programs are carried out at the community level through schools, public library branches, senior centers, nutrition programs, senior housing projects, private residences, faith-based groups, and other community based health care providers.
- Policy 1.1.8** Alachua County shall promote Public Safety for a healthy community through coordinating with the Community Traffic Safety Team and the Bicycle Pedestrian Advisory Board to pursue funding for a Pedestrian Safety Action Plan to address safety issues and disabled access, and to minimize traffic hazards and reduce crashes, injuries and fatalities through design of complete streets. To the maximum extent feasible, Alachua County will assist community and private efforts in applying GIS-enabled pedestrian walkability audit tools to collect and quickly analyze pedestrian infrastructure characteristics so that planners, health organization partners and practitioners, policy makers, and community

**Alachua County Comprehensive Plan Update:
Draft Revisions to Goals, Objectives, Policies, and Maps
For Board of County Commissioners Meeting
December 6, 2018**

members can make more effective decisions to improve safe environments for walkability.

OBJECTIVE 1.2

Develop and maintain ongoing County programs and infrastructure designed to support sustainable community health.

Policy 1.2.1 Promote a healthy community by encouraging and supporting access to recreation and physical activity through a network of activity based parks and access to resource based recreation facilities.

Policy 1.2.2 Promote a healthy community by planning for and implementing a connected system of walkways and bikeways which will provide alternative modes of transportation while also encouraging recreation, fitness, physical activity and exposure to the natural environment.

Policy 1.2.3 Develop and encourage civic engagement and volunteer opportunities in community projects that promote community health. Examples of such programs include health care provider volunteerism, creek and lake clean-ups, walk-to-school groups, Habitat for Humanity, and helpers for the elderly or disabled.

Policy 1.2.4 Increase access to health-promoting foods and beverages in the community. Form partnerships with organizations or worksites, such as employers, health care facilities and schools, to encourage healthy foods and beverages. Connect with UF/IFAS Extension Office for support in nutrition, horticulture, seasonal produce information and healthy lifestyle programming.

Policy 1.2.5 Promote a healthy community by providing for Aging in Place in residential development designs by allowing a mix of housing types and housing units that take into account visitability criteria and encourage Universal Design.

Policy 1.2.6 Incorporate CPTED (Crime Prevention Through Environmental Design) principles in designing new parks or renovating existing ones, and in County facilities exterior spaces.

OBJECTIVE 1.3

Promote a healthy community by providing for healthy weight management ~~obesity prevention~~ and prevention of obesity and other chronic conditions ~~illnesses~~ by addressing nutrition and the built environment.

Policy 1.3.1 Alachua County shall promote access to healthful, affordable and nutritious food.

Policy 1.3.1.1 Promote food security and public health by encouraging locally-based food production, distribution, and choice in accordance with the Future Land Use Element.

Policy 1.3.1.2 Alachua County shall consider programs to encourage property owners to make use of vacant properties as community gardens.

**Alachua County Comprehensive Plan Update:
Draft Revisions to Goals, Objectives, Policies, and Maps
For Board of County Commissioners Meeting
December 6, 2018**

- Policy 1.3.1.3** Continue to offer support for home and community gardening through programs offered by USDA Farm to School Programs and the Alachua County Extension Office and target low-income and populations at high-risk for health disparity for programs promoting gardening, healthy food access and nutrition improvement.
- Policy 1.3.1.4** Alachua County shall discourage the sale of less healthy foods and beverages as defined by Institute of Medicine within local government facilities including recreational areas.
- Policy 1.3.1.5** The County shall consider regulations limiting new fast food establishments in close proximity to schools.
- Policy 1.3.1.6** Support food banks, pantries, and other sources that help provide food assistance to low income residents so that all families, seniors, schools, and community-based organizations are able to access, purchase, and increase intake of seasonal and fresh fruits, vegetables, and other nutritious foods.
- Policy 1.3.2.** Alachua County shall partner with local organizations and develop standards to promote community food systems.
- Policy 1.3.2.1.** Standards and regulations for community agriculture shall be developed in coordination with the UF IFAS and Extension agents and local and regional agricultural organizations according to regulations of the Florida Department of Agriculture and the USDA. Existing standards will be utilized to the greatest extent possible.
- Policy 1.3.2.2.** As provided in the Future Land Use and Energy Elements, Alachua County shall promote and develop standards for uses, including produce stands, farmers markets and food cooperatives, to facilitate location of fresh produce providers within or in close proximity to residential areas.
- Policy 1.3.2.3.** Alachua County shall utilize economic development tools including public/private partnerships, and site facilitation, to promote location of grocery stores and Farmers Markets in proximity to underserved areas.
- (a) Coordinate with Regional Transit System [RTS] and other public transit providers to facilitate access to food shopping for ~~low income~~ transportation disadvantaged residents through incentives.
- (b) Encourage farmers' markets and other healthy food retailers to accept federal nutrition programs such as WIC and SNAP (food stamps) and encourage information distribution via county offices and website. Continue to work with local organizations to offer incentives for utilizing the nutrition programs.
- (c) Alachua County shall consider a program for partnerships for healthy corner stores, and incentives to attract grocers to food deserts.

**Alachua County Comprehensive Plan Update:
Draft Revisions to Goals, Objectives, Policies, and Maps
For Board of County Commissioners Meeting
December 6, 2018**

- Policy 1.3.2.4.** Alachua County shall work to implement the 2009 Hunger Abatement Plan and future updates, and shall provide technical assistance for community food access studies. Seek to eliminate food insecurity in Alachua County by 2050, and in the next 5 years increase community partnerships to meet food security goals. Encourage public and private efforts that support culturally appropriate food opportunities, including grocery stores, farmers markets, food banks and nutrition programs, especially to meet the nutritional needs of infants, children, elders, and other vulnerable populations in their neighborhoods. [Preliminary measures subject to refinement in study required by Energy Element (ENE) Policy 6.1.1.1.]
- Policy 1.3.2.5.** Alachua County should encourage edible landscaping (i.e., fruit trees and scrubs) for landscaping requirements through appropriate policy and standards of the ULDC.
- Policy 1.3.2.6.** Alachua County community planning efforts and ~~the CHOICES~~ community support programs will encourage participation by health coalitions and networks to create environments that support enjoyable, healthy eating, physical activity and a positive self-image.
- Policy 1.3.3** Alachua County shall implement a Health in All Policies approach in order to use the built environment to promote the health and wellbeing of its citizens and reduce chronic disease
- Policy 1.3.3.1** As a part of implementing a Health in All Policies approach, Alachua County shall involve health experts in all county planning and development projects.
- Policy 1.3.3.2** Alachua County will promote children's health by encouraging and supporting land uses in the environment surrounding schools and parks and on travel routes to schools and parks that complement and strengthen other formal programs, such as Safe Routes to Schools and Safe Routes to Parks.
- Policy 1.3.3.3** Alachua County will promote a healthy community by developing convenient, safe, and attractive opportunities for physical activity for residents of all ages and income, as part of their daily activities.

OBJECTIVE 1.4

Promote a healthy community by enhancement of school-based health promotion and activities, including for persons with special needs.

- Policy 1.4.1** The County should partner with education and governmental organizations to encourage community access to health information and education. Examples include the School Board of Alachua County, ~~UF, Santa Fe College,~~ higher education institutions, Alachua County Library District, the State of Florida, and the various private and public educational and health programs available to the Alachua County

**Alachua County Comprehensive Plan Update:
Draft Revisions to Goals, Objectives, Policies, and Maps
For Board of County Commissioners Meeting
December 6, 2018**

community. Alachua County should help promote participation in the Teen Safe Driving Coalition.

Policy 1.4.2 Alachua County will assist efforts to promote Safe Routes To Schools consistent with the Transportation Mobility and Public Schools Facilities Elements.

Policy 1.4.3 Co-location of Schools and parks shall be encouraged consistent with the Recreation Element.

Policy 1.4.4 Community partnerships for children’s advocacy will be a focus of County programs. Promote the use of schools as food distribution sites to increase food security for students and families. Examples include back-pack programs and school-based food pantries.

OBJECTIVE 1.5

Develop a reporting and monitoring system of indicators designed to assess Alachua County’ progress toward sustainable community health, including patient centered primary and hospital care, dental, mental, substance abuse and vision care.

Policy 1.5.1 To assist in planning and coordinating the delivery of countywide healthcare services, Alachua County Health Care Advisory Board, County departments and community partners shall utilize the Health Needs Assessments [HNA], the Alachua County Health and Human Services Master Plan ~~2005–2015~~ and Alachua County Health Department DOH Strategic Plan, to provide policy-makers with findings and recommendations that help strengthen local partnerships and ~~reduce~~ achieve health equity ~~inequalities~~, and apply this information in decision making processes.

Policy 1.5.1.1 Develop geographically indexed community health indicators designed to measure the County’s progress toward a sustainable, efficient and effective community partnership system for community health. These indicators should also include data to help ensure appropriate services in convenient locations to address the health needs of different segments of the County population in a culturally responsive manner.

Policy 1.5.1.2 Use these community health indicators to inform long-term, mid-term (strategic), and budgetary decision-making. Recognize the importance of County services to local community character and sustainability by planning for and integrating public safety and health services into both short- and long-term planning and the budgeting process. Include consideration of health criteria and impacts as part of capital projects planning, to ensure consideration of health equity. [For example, by improving safe and active transportation].

**Alachua County Comprehensive Plan Update:
Draft Revisions to Goals, Objectives, Policies, and Maps
For Board of County Commissioners Meeting
December 6, 2018**

Policy 1.5.1.3 Alachua County will work with County Health Department and other health agencies and non-profit health organizations to determine community design impacts on public health. When feasible proposals and programs will be reviewed with a Health Impact Assessment. Develop criteria in ULDC for conducting health impact assessments as part of review of development plan applications where appropriate in order to understand and address public health implications of significant projects.

OBJECTIVE 1.6

Reduce the prevalence and incidence of substance abuse and strive for a drug-free community.

Policy 1.6.1. The County should partner with agencies and community organizations for education, prevention, harm reduction and treatment programs to reduce substance abuse in all neighborhoods and workplaces.

Policy 1.6.2. Alachua County shall coordinate substance abuse programs and policies with local health organizations including Tobacco Free Alachua, University of Florida Health Street, and the HPW Coalition.

Policy 1.6.3. Alachua County will reduce and maintain low tobacco, alcohol, and drug abuse, and drug related crime rates.

Policy 1.6.4. Support efforts to reduce exposure to second-hand tobacco smoke in indoor and outdoor areas, particularly where vulnerable populations, such as children and seniors are likely to be present.

Policy 1.6.4.1 Encourage and support local jurisdictions in establishing smoke-free parks and recreational areas.

Policy 1.6.4.2 Encourage and support cities, workplaces, and multiunit housing to reduce residents' exposure to secondhand smoke by banning use on government property and public spaces and events, including outdoor dining and service areas, entryways, farmers' markets, plazas, and community street fairs.

Policy 1.6.5. Coordinate with cities and other stakeholders to establish tobacco free housing, and prohibit smoking in multi-family residential housing.

Policy 1.6.5.1 Promote tobacco free multiunit housing which shares common walls, such as apartments, duplexes, townhouses, row houses, and condominiums.

Policy 1.6.6. Create a tobacco retail licensing policy that earmarks a portion of the license fee for compliance checks.

Policy 1.6.7 Consider the potential negative impacts of proposed uses involving selling or serving alcohol, tobacco products, or any other controlled substance of a similar nature when a proposed site's proximity to other such uses and to youth serving facilities would result in negative impacts. Establish standards for mitigation of impact or restriction of sales.

**Alachua County Comprehensive Plan Update:
Draft Revisions to Goals, Objectives, Policies, and Maps
For Board of County Commissioners Meeting
December 6, 2018**

Policy 1.6.7.1 Encourage and support cities to restrict the number of tobacco retailers near schools, other youth-populated areas, and areas with a high density of existing tobacco retailers.

Policy 1.6.8. Encourage and support cities, workplaces, and multiunit housing to include limitations or restrictions on electronic smoking devices in all (existing) smoking and tobacco policies, regulations, and educational programs.

Policy 1.6.8.1 Support the elimination of the sale and distribution of mentholated cigarettes and/or other flavored tobacco including electronic nicotine delivery products.

Policy 1.6.9 Support and increase the number of programs, clinics, and social service agencies that implement evidenced-based tobacco cessation treatment services.

OBJECTIVE 1.7 Increase equitable access to affordable mental health services.

Policy 1.7.1. Alachua County shall coordinate with service providers and community organizations to promote Mental Health First Aid and other support programs for children, youth, seniors and at-risk populations.

Policy 1.7.2. Alachua County will support community efforts to provide mentoring of youth in partnership with SBAC, after school non-profit organizations, and the Institute for Workforce Innovation.

Policy 1.7.3. Alachua County will support efforts of health professionals to identify populations at-risk to target mental health services.

OBJECTIVE 1.8 Increase equitable access to affordable dental health services.

Policy 1.8.1. Alachua County shall coordinate with service providers and community organizations to promote and support dental health programs for children, youth, working-age adults, and older adults.

Policy 1.8.2. Alachua County will support efforts of health professionals to identify populations at high risk for dental diseases and conditions to target dental health services.

Policy 1.8.3. Alachua County shall support school-based dental screening, prevention, education and treatment programs in high-risk schools in collaboration with service providers and community organizations.

Policy 1.8.4. Alachua County shall support dental screening, prevention, education, and treatment programs for older adults in nursing homes, assisted living facilities, and other community centers.

Policy 1.8.5. Alachua County shall encourage County-wide community water fluoridation.

**Alachua County Comprehensive Plan Update:
Draft Revisions to Goals, Objectives, Policies, and Maps
For Board of County Commissioners Meeting
December 6, 2018**

OBJECTIVE 1.9 Alachua County shall support programs to reduce poverty and its effects.

Policy 1.9.1. Encourage coordinated service delivery for food, housing, transportation, health and dental care, and other basic necessities for people and families in need, including support of the safety net. Identify and support community based programs and services that address health risks resulting from abuse, poverty, homelessness, and untreated medical conditions. Encourage collaboration between existing partners, prioritize funding initiatives, and organize community resources to intervene for vulnerable individuals to create a comprehensive safety net.

Policy 1.9.2. Contribute to efforts that help people meet their basic needs, maintain their independence as long as possible, and remain in their neighborhoods of choice.

Policy 1.9.3. Allow temporary shelter for those who are homeless and invest in services and programs that provide a pathway to permanent housing.

Policy 1.9.4. Develop an increased level of emergency preparedness among all segments of the population to help coordinate governmental response and recovery efforts that seek to minimize the adversity of a major emergency or disaster.

COMMUNITY HEALTH ELEMENT DEFINITIONS

Complete Streets- Streets with safe travel facilities for all users—pedestrians, bicyclists, motorists and transit riders—of all ages and ability levels. Facilities on a complete street include sidewalks, bike lanes, wide shoulders, crosswalks, refuge medians, bus pullouts or special bus lanes, raised crosswalks, audible pedestrian signals, sidewalk bulb-outs or other physical design details to promote mode choice.

Corner Store- Typically defined as a small-scale store that sells a limited selection of food and other products. These businesses are also referred to as convenience stores or bodegas. ([United States Department of Agriculture, Healthy Corner Stores Guide](#))

Health Equity - Everyone has a fair and just opportunity to be healthier. This requires removing obstacles to health such as poverty, discrimination, and their consequences, including powerlessness and lack of access to good jobs with fair pay, quality education and housing, safe environments, and health care.

Health Impact Assessment- A process that helps evaluate the potential health effects of a plan, project, or policy before it is built or implemented. HIA brings potential positive and negative public health impacts and considerations to the decision-making process for plans, projects, and policies that fall outside traditional public health arenas, such as transportation and land use. An HIA steps provides practical recommendations to increase positive health effects and minimize negative health effects:

Screening (identifying plan, project, or policy decisions for which an HIA would be useful).

Scoping (planning the HIA and identifying what health risks and benefits to consider).

**Alachua County Comprehensive Plan Update:
Draft Revisions to Goals, Objectives, Policies, and Maps
For Board of County Commissioners Meeting
December 6, 2018**

Assessment (identifying affected populations and quantifying health impacts of the decision).

Recommendations (suggesting practical actions to promote positive health effects and minimize negative health effects).

Reporting (presenting results to decision makers, affected communities, and other stakeholders).

Monitoring and evaluation (determining the HIA's impact on the decision and health status)

Health Needs Assessment [HNA]- Health needs assessment (HNA) is a systematic method for reviewing the health issues facing a population, leading to agreed priorities and resource allocation that will improve health and reduce inequalities. [Update for Alachua County and sub-geographies used to determine priority of local health service needs, March 2010]

Universal Design- Building design that is suitable for all ages and abilities, which includes criteria of equitable use (useful and marketable to everyone), flexible (accommodates many preferences and abilities), simple and intuitive (easy to understand), tolerance for error (minimizes hazards and accidents), and low physical effort (design maximizes efficiency and minimizes fatigue).

Visitability- Although less than the ideal of a universally designed home, visitability is actually universal design practiced through community and neighborhood planning. It ensures that a basic level of accessibility will be provided in all housing, and, it opens opportunities for participation in community life. Key features of Visitability are (1) at least one zero-step entrance to homes; (2) all interior doors providing 32" passage space; and (3) at least a half bathroom on the main floor.

Walkability Audits- a community-based exercise intended to highlight opportunities, identify obstacles, and evaluate how easy it is to get around a neighborhood on foot. Specifically, GIS based walkability audit tools could apply unique sets of walkability measures to different types of walking environments [urban/rural]; perhaps focus auditing activities on major streets and intersections only (e.g. do not audit neighborhood streets where possible); include subjective as well as objective measures of the streetscape; verify the accuracy of digital base maps before widespread implementation; and continuously evaluate whether the simpler technology of pen and paper would be preferable alternatives.

**Alachua County Comprehensive Plan Update:
Draft Revisions to Goals, Objectives, Policies, and Maps
For Board of County Commissioners Meeting
December 6, 2018**

FUTURE LAND USE ELEMENT

OBJECTIVE 8.5 - Plan East Gainesville

Alachua County has established a special area plan, Plan East Gainesville, for the East Gainesville area. This plan was established in collaboration with the City of Gainesville and other stakeholders and requires collaboration with the City of Gainesville for part of its implementation. Alachua County is committed to implementing the general vision of the plan – both long and short term, consistent with the implementation strategies outlined in the plan. The key elements of the County’s implementation strategy are captured in the following policies.

Policy 8.5.1 Map 16 (Figure A of Recommended Master Plan for Plan East Gainesville) adopted as part of FLUE Map Series to serve as a guiding vision for East Gainesville. The County shall promote economic opportunity through implementation of Plan East Gainesville, and sustainable development practices and design standards that support natural resources protection and energy efficiency.

Policy 8.5.2 As part of the County’s strategy to expand employment and eliminate disparities identified in BEBR’s 2018 study of Racial Inequity in Alachua County, infrastructure improvements that would facilitate development focused within the vicinity of the Eastside Activity Center shall be identified as part of a special area planning process should be considered as a foundation for establishment of a Community Redevelopment Area. The County shall continue to protect vital natural resources, such as wetlands, watersheds, significant habitat, strategic ecosystems, creeks, tree canopy, and scenic vistas that make East Gainesville unique. *[Revised to add focus on infrastructure to encourage development and eliminate disparities, and delete reference to Community Redevelopment Area.]*

Policy 8.5.3 The County shall seek ways to increase economic opportunities by bringing sustainable and higher paying jobs and providing services. *[Existing policy. Moved from 8.5.8]*

Policy 8.5.4 Coordinate with the City of Gainesville and other stakeholders in the development of a strategy for the Alachua County Fairgrounds for possible conversion to a mixed-use employment center. *[Renumbered from 8.5.3 to 8.5.4]*

~~**Policy 8.5.4** Coordinate with the City of Gainesville to evaluate the site east of Fred Cone Park as a potential cultural or recreational center to be compatible and complementary with the existing uses at Cone Park, and support co-location of a library branch or other related community-type facilities and services. *[This has been completed]*~~

**Alachua County Comprehensive Plan Update:
Draft Revisions to Goals, Objectives, Policies, and Maps
For Board of County Commissioners Meeting
December 6, 2018**

- Policy 8.5.5** TRANSPORTATION: Coordinate with the MTPo and the City of Gainesville to strengthen economic, social and transportation linkages and establish a Bus Rapid Transit system connecting east Gainesville with centers of employment and commerce including the areas of downtown, the University of Florida, and the western urban areas of unincorporated Alachua County. ~~Coordinate with the City of Gainesville and the MTPo to extend East 27th Street from Hawthorne Road to NE 39th Avenue.~~ *[Analysis conducted during the updates to the MTPo's Long Range Transportation Plan Update and the County's Mobility Plan Update found that the extensive wetlands and floodplain within the proposed corridor would make construction of this roadway extension infeasible. Further improvements to SE 43rd St were included within the CIE as an alternative. These improvements were completed in 2017.]*
- Policy 8.5.6** HOUSING: Diversify housing choices in the area by creating incentives for more market rate housing through the County's housing program such as State Housing Initiative Partnership (SHIP). The County shall develop strategies to expand the range of housing choices to attract and retain residents with varied income levels.
- Policy 8.5.7** CAPITAL IMPROVEMENT: Assign priority, in County's economic development budget, to capital improvement projects that enhance the implementation of Plan East Gainesville.
- Policy 8.5.8** The County shall promote and incentivize redevelopment of areas already in development or impacted by prior development.
- Policy 8.5.9** The County shall continue to assist property owners and business interests within the Plan East Gainesville area in achieving a balance of sustainable development and natural resource protection, including: actions to increase outreach and education about the value and benefits of natural resources within the community; clarifying the limitations and uses of available data and maps on the web; and stressing the value of ground-truthing (inspecting) of regulated resources on a development site prior to initiating the development process.