



Evaluation & Appraisal and Update of Alachua County Comprehensive Plan: 2011-2030

Board of County Commissioners
Topic: Water & Natural Resource Protection
Draft Policy Revisions

Environmental Protection Department
& Parks and Land Conservation

October 4, 2018

Schedule for Review of Draft Amendments to Comprehensive Plan

- **BoCC Workshops**
 - Oct. 4th, Nov. 15th, Dec. 6th
- **Local Planning Agency/Planning Commission Workshops**
 - Sept. 19th, Oct. 17th, Nov. 21st (or special meeting date TBD)
- **Public Hearings on Transmittal of Draft Amendments:**
 - January – March 2019

Review of Strategies and Direction to Address Issues Identified by the Evaluation and Appraisal for Update of the Comprehensive Plan

- **Local Planning Agency discussion of Issues and proposed strategies**
 - March 21st, April 18th (Natural Resources), May 30th
- **BoCC Workshops on Issues and proposed strategies**
 - March 20th, April 3rd (Natural Resources), April 17th, May 1st, May 17th, June 5th, August 21st, September 4th

Purpose of Workshops

Receive input regarding draft policy language to update Comprehensive Plan for public hearings



WATER & NATURAL RESOURCE TOPICS

- Water Conservation
- Landscaping
- Surface Waters and Wetland Protection
- Stormwater
- Springs Protection
- Land Conservation
- Air Quality



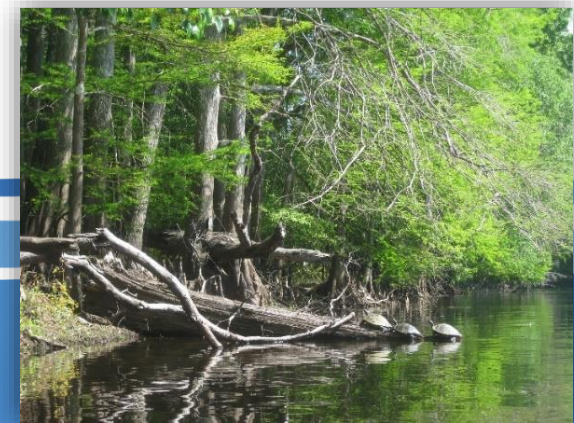
LAND USE ELEMENT

- Requires Low Impact Design (LID) as part of the stormwater management system for new development in Sensitive Karst Areas



CONSERVATION AND OPEN SPACE ELEMENT

- Creates additional flexibility for conservation open space protection in certain limited situations
- Expands the Outstanding Florida Waters (OFWs) buffer to an average of 200 feet
- Updates wetland mitigation language to be consistent with State requirements and current county policies and practices



CONSERVATION AND OPEN SPACE ELEMENT

- Adds strategy of planting trees, shrubs and physical barriers, if necessary, adjacent to streets to reduce particulate air pollution
- Updates Hazardous Material Code language

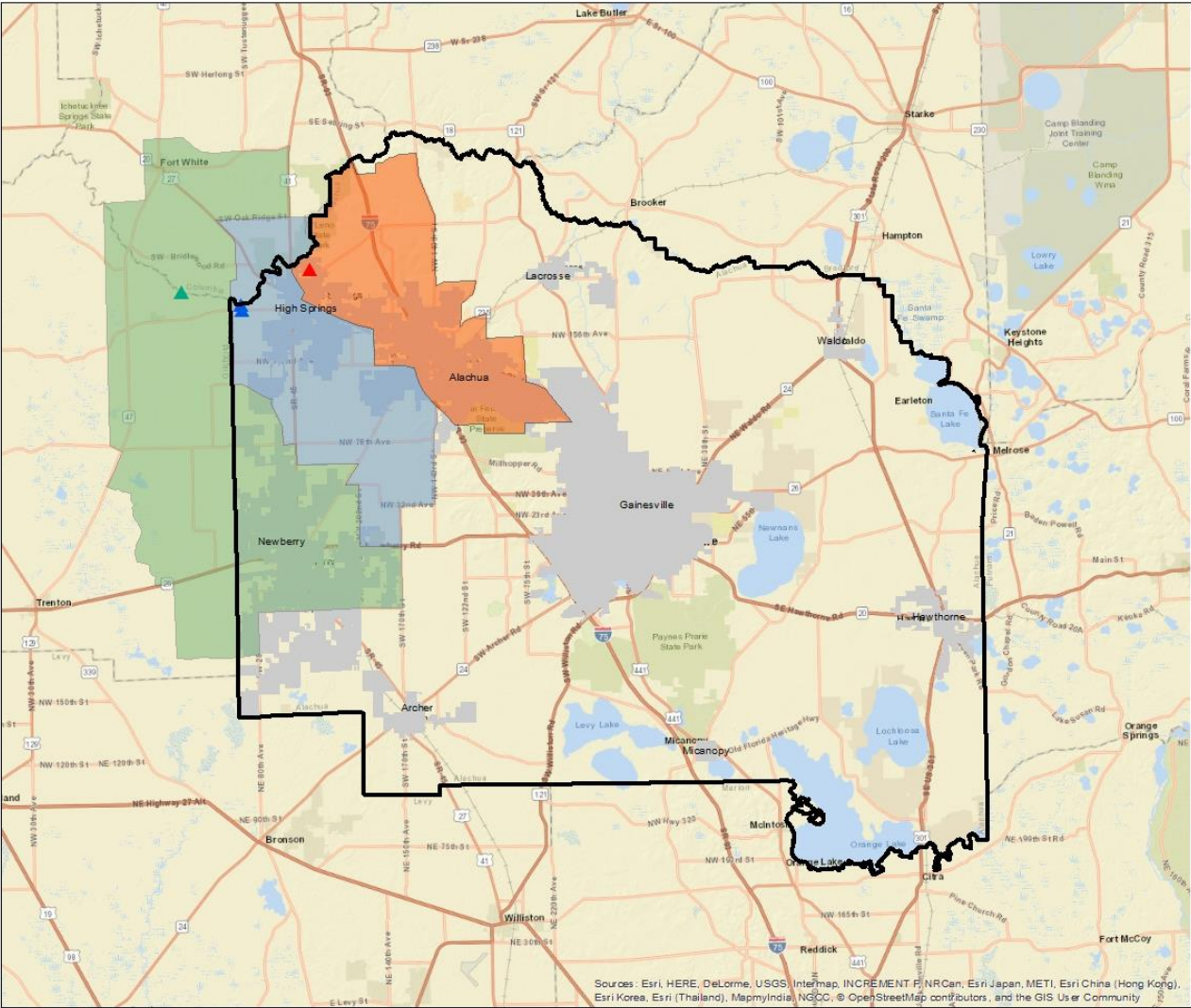


CONSERVATION AND OPEN SPACE ELEMENT

- Updates Springs protection language
- Adopts a map of Outstanding Florida Springs (OFS) Priority Focus Areas.
- Extends prohibited activities and regulations that currently apply in the high aquifer recharge areas to OFS Priority Focus Areas

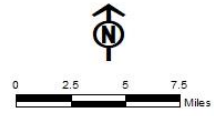


CONSERVATION AND OPEN SPACE ELEMENT



Devil's, Hornsby & Poe Springs Conceptual Priority Focus Area (PFA)

- ▲ Devil's Springs
- ▲ Hornsby Springs
- ▲ Poe Springs
- Devil's Springs System PFA
- Hornsby PFA
- Poe Draft PFA



DISCLAIMER: This map and the spatial data it contains are made available as a public service, to be used for reference purposes only. The Alachua County Environmental Protection Department provides this information AS IS without warranty of any kind, implied or expressed, regarding accuracy, completeness, or fitness of use. The quality of the data is dependent on the various sources from which each data layer is obtained.

Sources: Esri, HERE, DeLorme, USGS, Intermap, INCREMENT P, NRCan, Esri Japan, METI, Esri China (Hong Kong), Esri Korea, Esri (Thailand), MapmyIndia, NGCC, OpenStreetMap contributors, and the GIS User Community

CONSERVATION AND OPEN SPACE ELEMENT

- Requires the code be updated to reduce permanently irrigated areas for new development
- Landscape plants shall be selected based on their water requirements
- Adds new definition of resilient landscaping



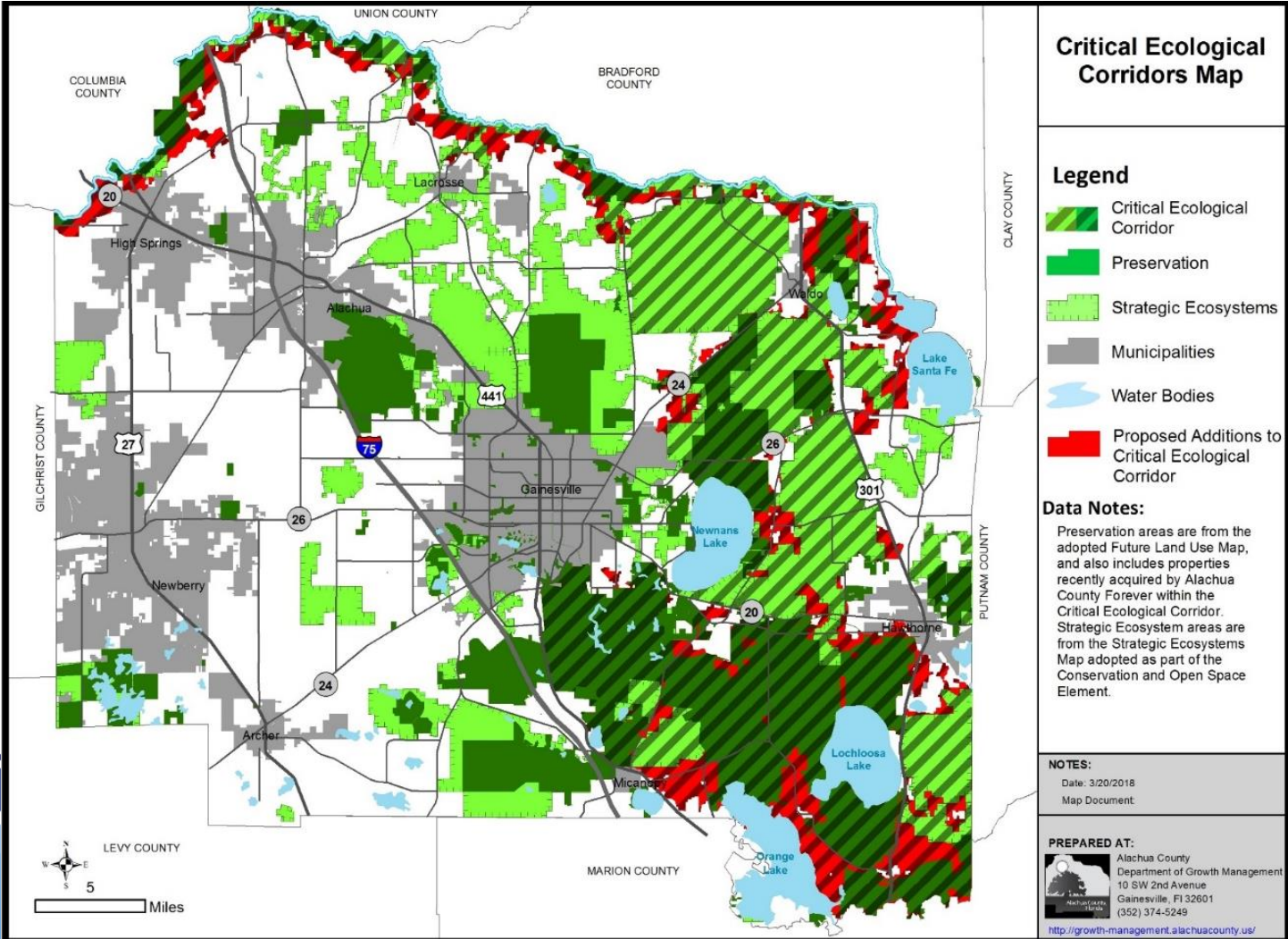
CONSERVATION AND OPEN SPACE ELEMENT

- Updates language to be consistent with State requirements for Basin Management Action Plans (BMAPs) and Total Maximum Daily Loads (TMDLs)
- Adds Santa Fe River and Orange Lake to Impaired Waters
- Requires development of watershed management plans



CONSERVATION AND OPEN SPACE ELEMENT

- Updates the Critical Ecological Corridors Map and associated language



POTABLE WATER & SANITARY SEWER ELEMENT

- Updates reclaimed water best uses
- Discourages permanent landscape irrigation through regulatory and/or voluntary measures.



What starts here, can end up here.



My Yard
Our Water

It's all connected

STORMWATER MANAGEMENT ELEMENT

- Removed outdated policies
- Requires an Advanced Stormwater Treatment Code based on Low Impact Design (LID) principles, including provisions for the Sensitive Karst Area, Outstanding Florida Waters and Impaired Waters.
- Adds definition for LID and Sensitive Karst Areas



ENERGY ELEMENT

- Adds water conservation as a requirement for Capital Improvement Projects
- New County facilities must meet Florida Water Star standards
- Requires coordination with School Board on water efficiency efforts



INTERGOVERNMENTAL COORDINATION ELEMENT

- Removes outdated language on coordination of Critical Ecological Corridors map and strategic ecosystems and countywide visioning associated with Boundary Adjustment Act

Board Discussion & Direction

Provide direction on the draft revisions to the Comprehensive Plan Natural Resources policies for consideration at public hearings.