

Alachua County Eastside Community Redevelopment Area

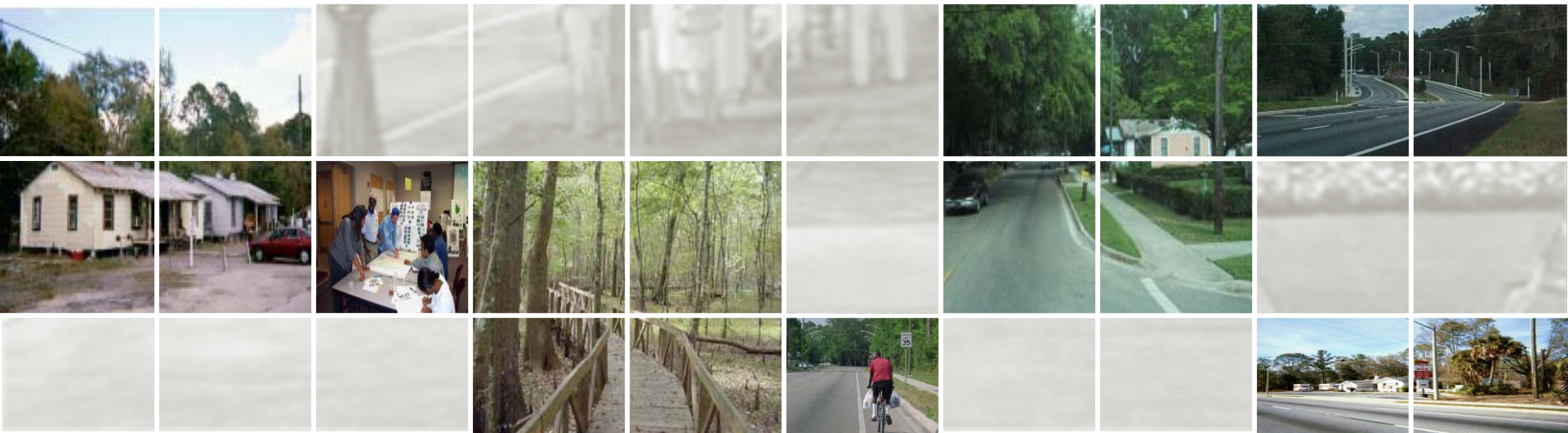
Community Workshop

Eastside High School Media Center

February 3, 2011

Tonight's Meeting

- Planning Background
- CRA Concept
- Timeline
- Conversation: CRA Goals
 - Community Needs
 - Redevelopment Plan



Plan East Gainesville

Year-long collaboration between citizens, Alachua County, the City of Gainesville, FDOT, and MTPO

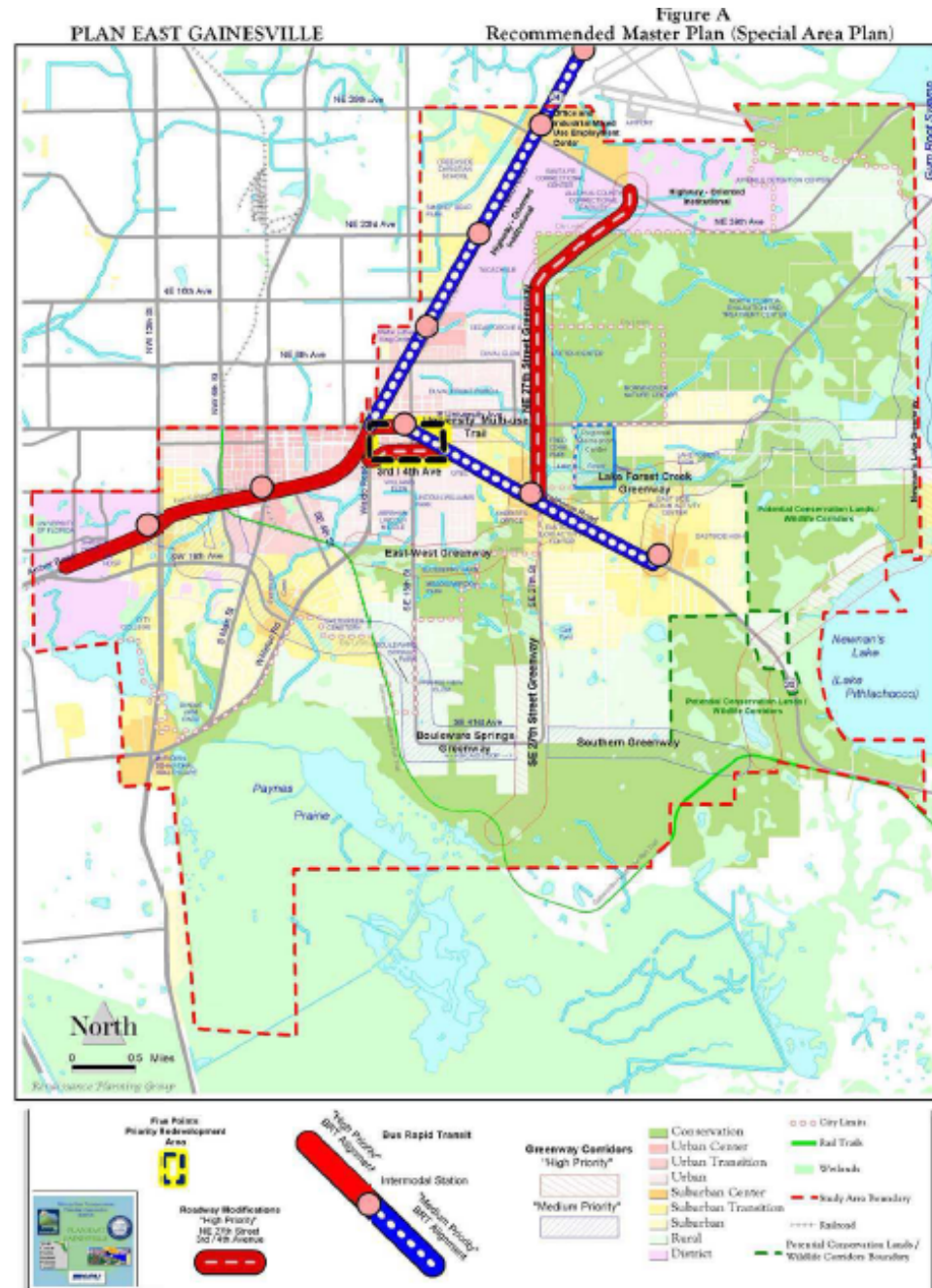
Guiding Vision for community

Goals include increased economic activity through community investment, improvements to transportation access, restoration and preservation of natural areas

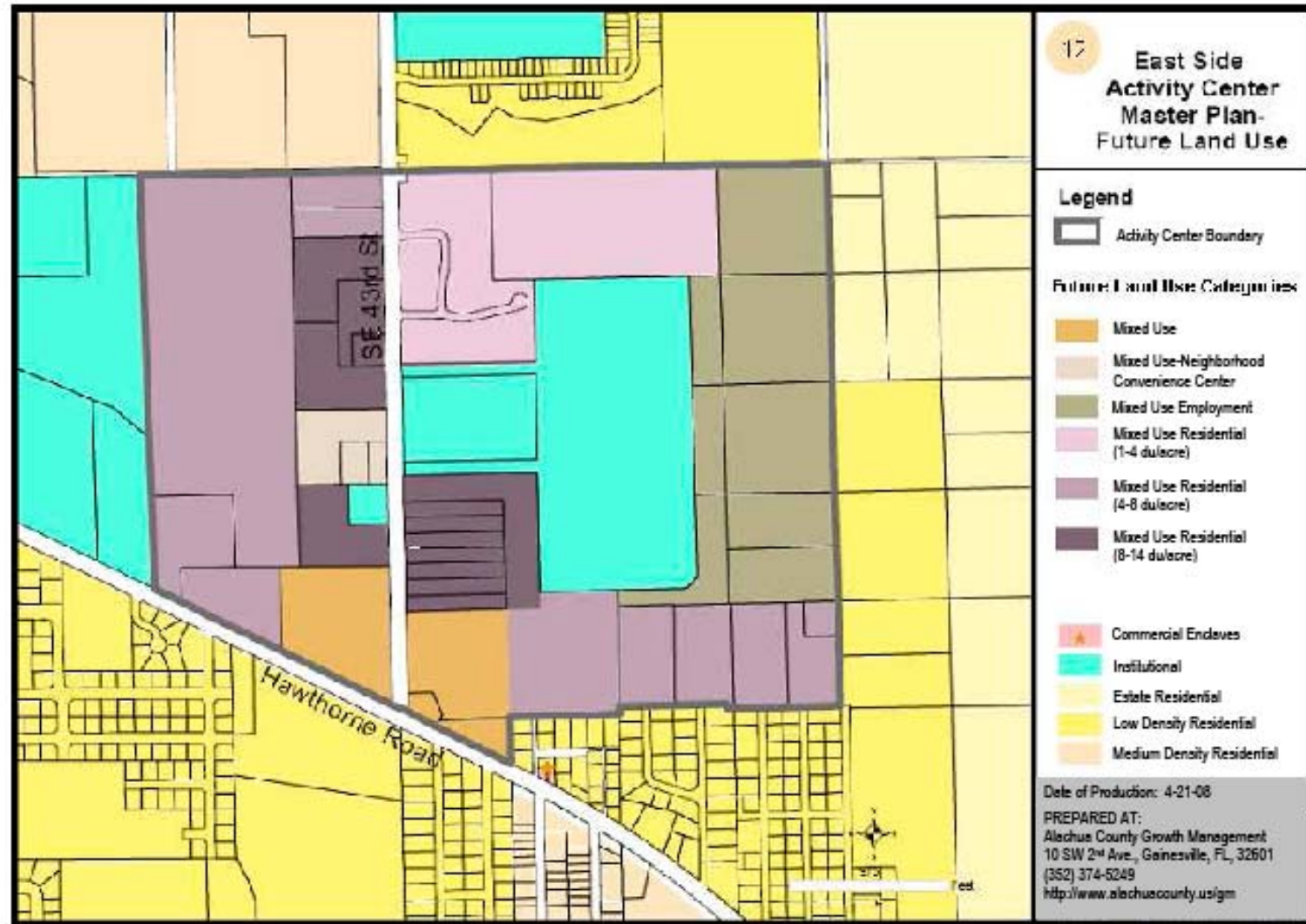
Adopted by City and County Commissions in 2003

Incorporated in County Comprehensive Plan

Foundation for establishing CRA



Eastside Activity Center



Potential Community Redevelopment Area (CRA) Concept

Fostering Business Expansion

Revitalizing Community

**CRA
GOALS**

Attracting Additional Development

Environmental Conservation

Parking lots and garages

Streetscapes and transportation
improvements

Neighborhood parks

Building renovations

Sidewalks and street tree plantings

New building construction

Flood control initiatives

Water and sewer improvements

Estimated Time Line for Eastside CRA

2011												2012	
JAN	FEB	MAR	APR	MAY	JUN	JUL	AUG	SEP	OCT	NOV	DEC	JAN	FEB
Community Meetings to discuss CRA													
		Workshop/ Update to County Commission											
Overview & Analysis of Existing Conditions				Initial Study for Finding Necessity									
						Formal Action of Finding of Necessity & Establish CRA Board							
Strategy Analysis & Evaluation									Draft Redevelopment Plan				
												Adopt Redevelopment Plan	

Typical Goals of a Community Redevelopment Area (CRA) Concept

Improve Local Economy

Provide a more diversified and stable economic base for the redevelopment project area and community.

Improve Transportation

Provide safer, and more efficient movement of persons and goods within the redevelopment project area and community.

Improve Public Facilities

Conserve existing public facilities and to provide new facilities as needed for complete development of the redevelopment project area and community.

Affordable Housing

Provide housing choices for all economic segments of the redevelopment project area and community.

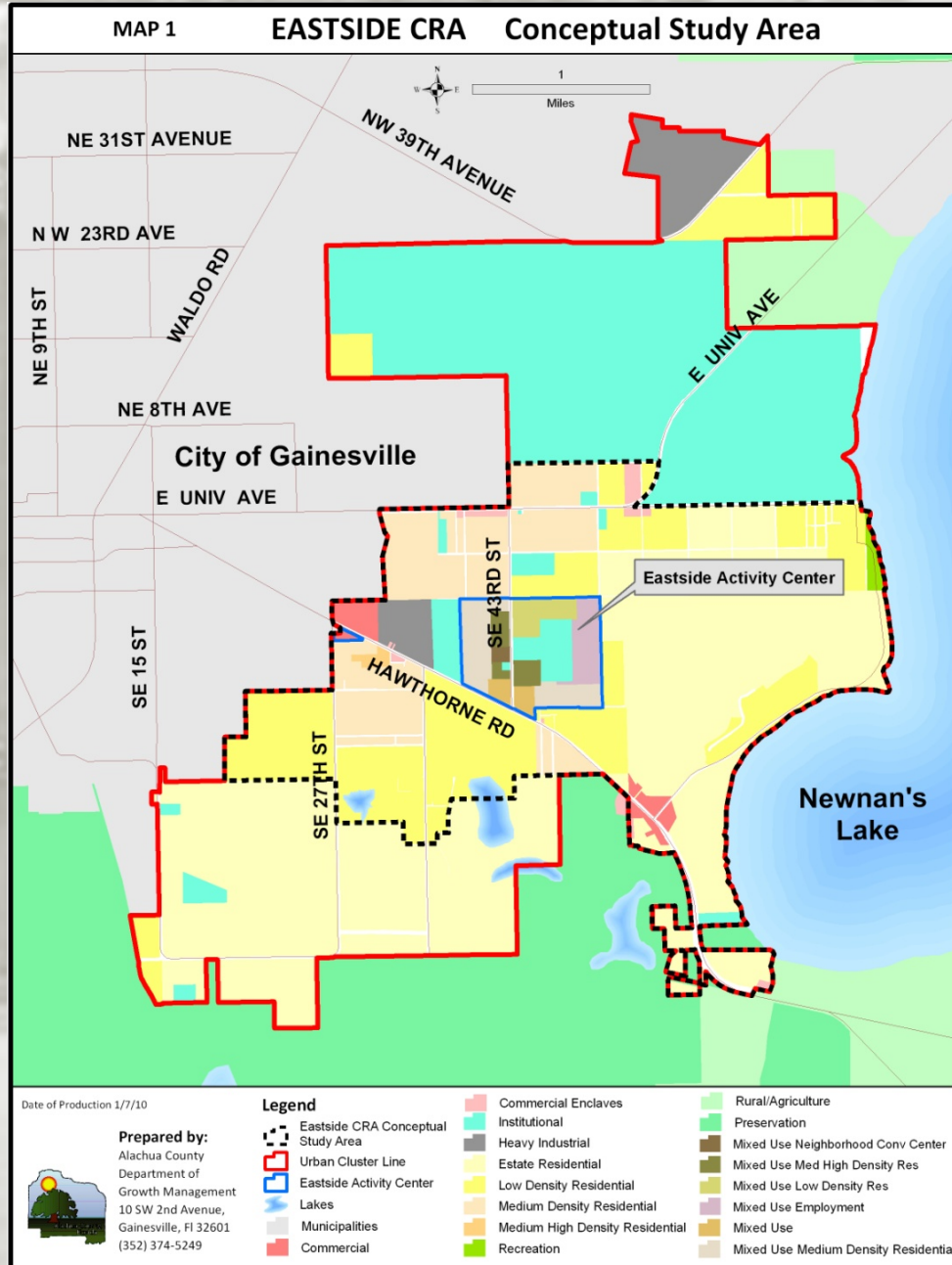
Employment Opportunities

Provide employment opportunities for the residents of the redevelopment project area and community.

Natural Resources

Conserve and protect natural areas and environmental qualities that contribute to the beauty and character of the community.

Conceptual Study Area



CRA Process

Adopt the Finding of Necessity

This will formally identify the conditions within the community , establish the area boundary, and establish the CRA Board

Develop and adopt the Community Redevelopment Plan

The plan addresses the unique needs of the targeted area and includes the overall goals for redevelopment in the area, as well as identifying specific projects.

Create a Redevelopment Trust Fund

Establishment of the Trust Fund enables the Community Redevelopment Agency to direct the increase in real property tax revenues back into the targeted area.

Communication is Key

- Comments and questions
- Goals and project ideas

www.growth-management.alachuacounty.us/comprehensive_planning/CRA

