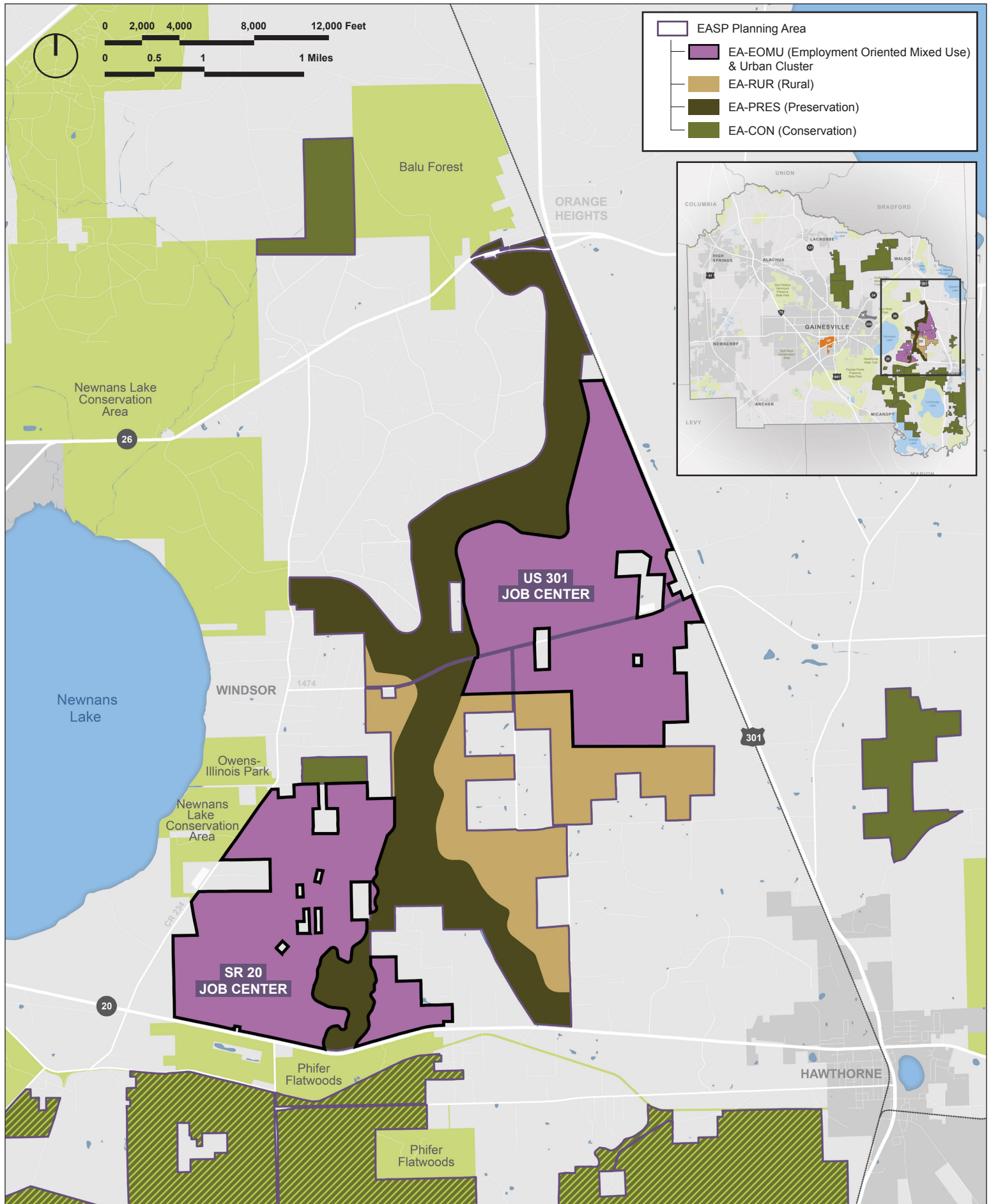


Data Sources: Alachua County GIS, Plum Creek | Updated: 06-2015



A community discussion on the future of East County  
CONVENED BY PLUM CREEK

Proposed Map F.17 of  
the Future Land Use Map Series  
June 2015



Data Sources: Alachua County GIS, Plum Creek | Updated: 06-2015



A community discussion on the future of East County  
CONVENED BY PLUM CREEK

Proposed Map F.17A (inset) of  
the Future Land Use Map Series  
June 2015