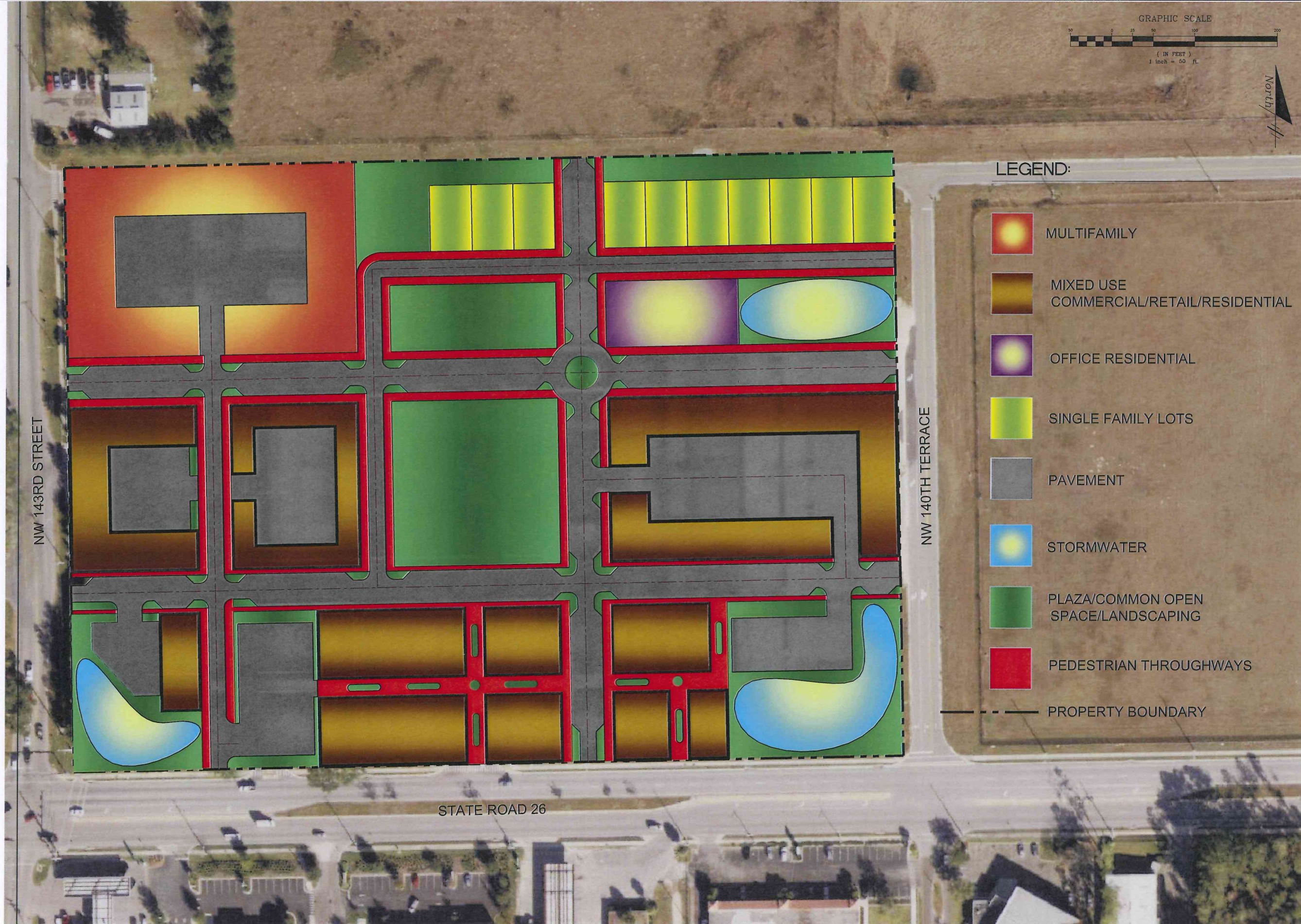


\\Server\Projects\miscellaneous projects\BD\bd\_eng\_base\_03.dwg Plotted: Jul 13, 2009 - 5:39pm by mrfolsom



LEGEND:

-  MULTIFAMILY
-  MIXED USE  
COMMERCIAL/RETAIL/RESIDENTIAL
-  OFFICE RESIDENTIAL
-  SINGLE FAMILY LOTS
-  PAVEMENT
-  STORMWATER
-  PLAZA/COMMON OPEN  
SPACE/LANDSCAPING
-  PEDESTRIAN THROUGHWAYS
-  PROPERTY BOUNDARY

NO.	DATE	DESCRIPTION	BY

DESIGNED BY	WTJ
DRAWN BY	MAF
CHECKED BY	WTJ
APPROVED BY	WTJ

SHEET TITLE:  
**GENERAL TND  
CONCEPTUAL PLAN**

CONCEPTUAL PLAN FOR:  
**ALACHUA COUNTY  
CPA 01-09**

DO NOT SCALE THIS DRAWING

**JEL**  
JARVIS & FOLSOM, INC.  
ENGINEERING & PLANNING  
2579 SW 87th Drive, Suite 100 - Gainesville, FL 32608  
Phone: 352.276.7022 Fax: 352.333.9533  
email: walterjarvis@jef-civil.com

Jarvis & Folsom, Inc.  
Certificate of Authorization  
No. 28456

Walter Jarvis, P.E.  
Florida P.E. No.: 69101  
PROJECT NO.:

SCALE:  
AS SHOWN

DATE:  
JULY 2009

DRAWING:  
**TND-1**