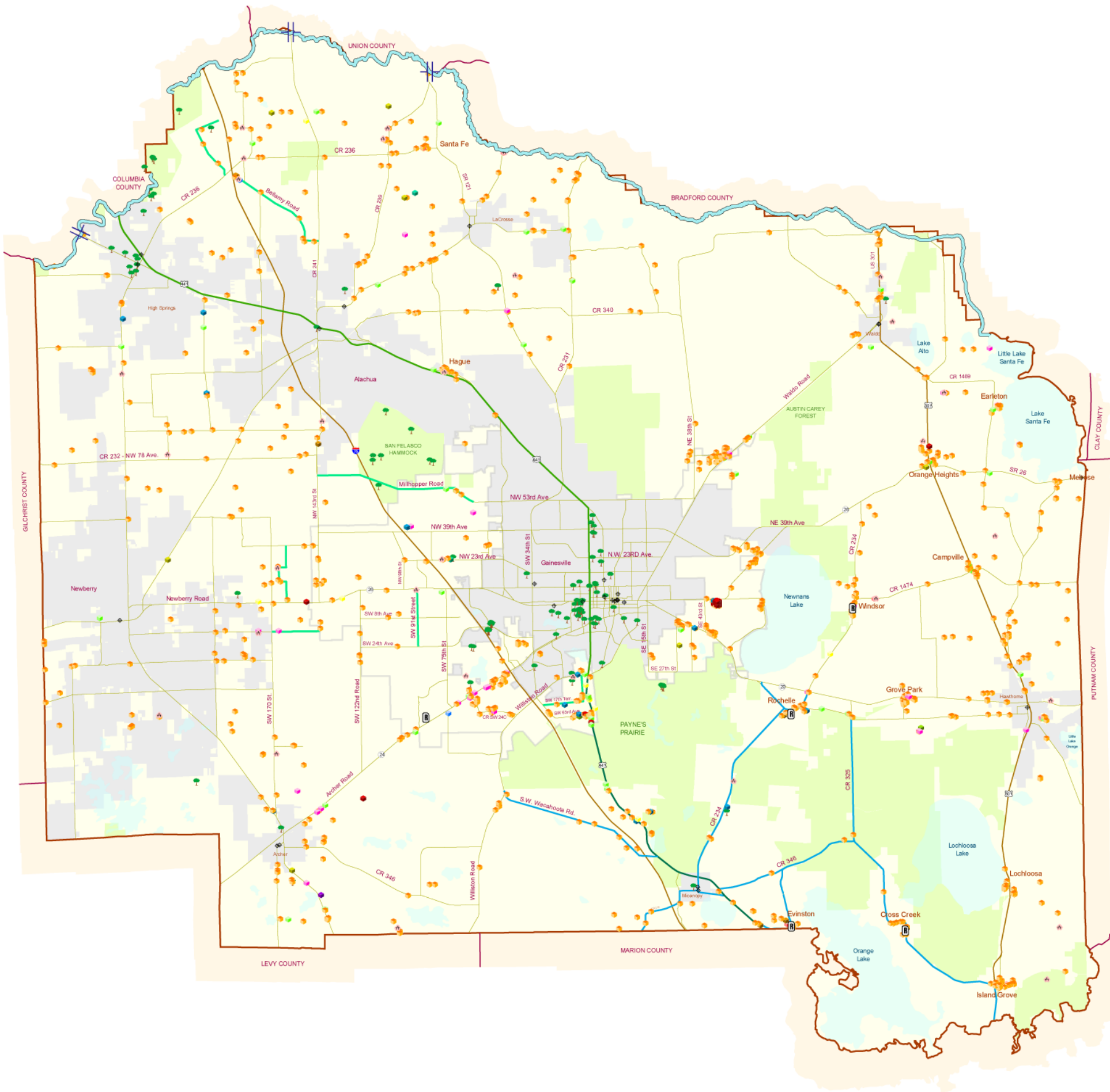


HISTORIC STRUCTURES, MARKERS AND NATURAL LANDMARKS - ALACHUA COUNTY, FLORIDA

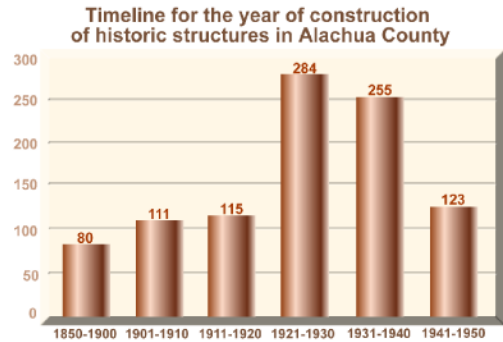


Legend

- | | | |
|--|---|--------------------------------------|
| (6 units) Carpenter Gothic *PE | (1 unit) Mediterranean Colonial Revival *PE | (26 markers) Historic Marker |
| (45 units) Craftsman | (15 units) Minimal Traditional | (2 units) Tudor Revival |
| (10 units) Colonial Revival *PE | (2 units) Mission *PE | Bellamy Road Scenic Road |
| (776 units) Frame Vernacular *PE | (8 units) NeoClassical Revival | Millhopper Road Scenic Road |
| (2 units) Gothic Revival | (8 units) Queen Anne (Revival) *PE | SW 17th Terrace Scenic Road |
| (34 units) Masonry Vernacular | (24 units) Ranch | SW 91st Street Scenic Road |
| | | Highway 441 State Scenic Road |

*PE - Some units may be eligible for inclusion in the National Register of Historic Structures.

- | | |
|----------|--|
| | |
| (1 unit) | |
| | |
| | |
| | |



Poster Size: 36 x 30
Date of Production: 01/28/2008
File on Disk: F:\GIS\Projects\poster_maps\Historic_Structures.mxd



Prepared by:
Alachua County Government
Department of Growth Management
10 SW 2nd Avenue
Gainesville, FL 32601
(352) 374-5249
<http://growth-management.alachua.fl.us/>

Data Sources
Municipalities
Historic Markers
Historic Structures
Scenic Roads
Champion Trees
Major Roads
Lakes
DOCUMENTATION:
<http://growth-management.alachua.fl.us/gis/warehouse.php>

Notes:
The **Scenic Roads** shown on the map were designated as such by the Alachua County Department of Environmental Protection because of their unique aesthetic value. Certain improvements and developments are prohibited on and around these roads.

The **Historic Structures** data is the result of a field survey conducted in 2000 for locating and documenting historic resources within the unincorporated areas of Alachua County. It was funded by Alachua County with assistance from the Florida Department of State, Division of Historical Resources and it is the first of its kind.

The Florida **Historical Marker** Program recognizes historic resources, persons, and events that are significant in the areas of architecture, archaeology, Florida history and traditional culture by promoting the placement of historic markers and plaques at sites of historical and visual interest. Further information can be found on the website of the Florida Division of Historical Resources:
<http://djr.dos.state.fl.us/bhp/markers/markers.cfm?ID=alachua>