

# Mobility

## ALACHUA COUNTY'S PLAN TO EFFECTIVELY LINK LAND USE AND TRANSPORTATION

### Overview

Alachua County is preparing amendments to its Comprehensive Plan which propose to reduce vehicle miles travelled and greenhouse gas emissions per capita by providing for enhanced transportation mobility options in conjunction with land use changes that bring services closer to residents and provide for development densities and intensities that are transit supportive.

### Key features of this plan include:

- 1) An alternative concurrency management system that will enable new development to satisfy its transportation concurrency obligations through the payment of a multimodal transportation fee.
- 2) Provisions and incentives for Transit Oriented Developments and Traditional Neighborhood Developments that will facilitate a reduction in vehicle miles travelled per capita.
- 3) A financially feasible multimodal infrastructure plan to accommodate future growth and transportation demands within the Urban Cluster Boundary in an fiscally efficient and ecologically responsible way.



### For more information...

Alachua County Growth Management Department  
10 SW 2nd Ave  
Gainesville, FL 32601  
352-374-5249

Contact Jonathan Paul at [jbpaul@alachuacounty.us](mailto:jbpaul@alachuacounty.us) or Jeff Hays at [jhays@alachuacounty.us](mailto:jhays@alachuacounty.us)

All documents are drafts and have not been approved or adopted by the Alachua County Board of County Commissioners.  
All proposed Comprehensive Plan amendments, maps and background information can be reviewed at the Growth Management Office or online at: [http://growth-management.alachuacounty.us/TPIC/cm\\_docs.php](http://growth-management.alachuacounty.us/TPIC/cm_docs.php)

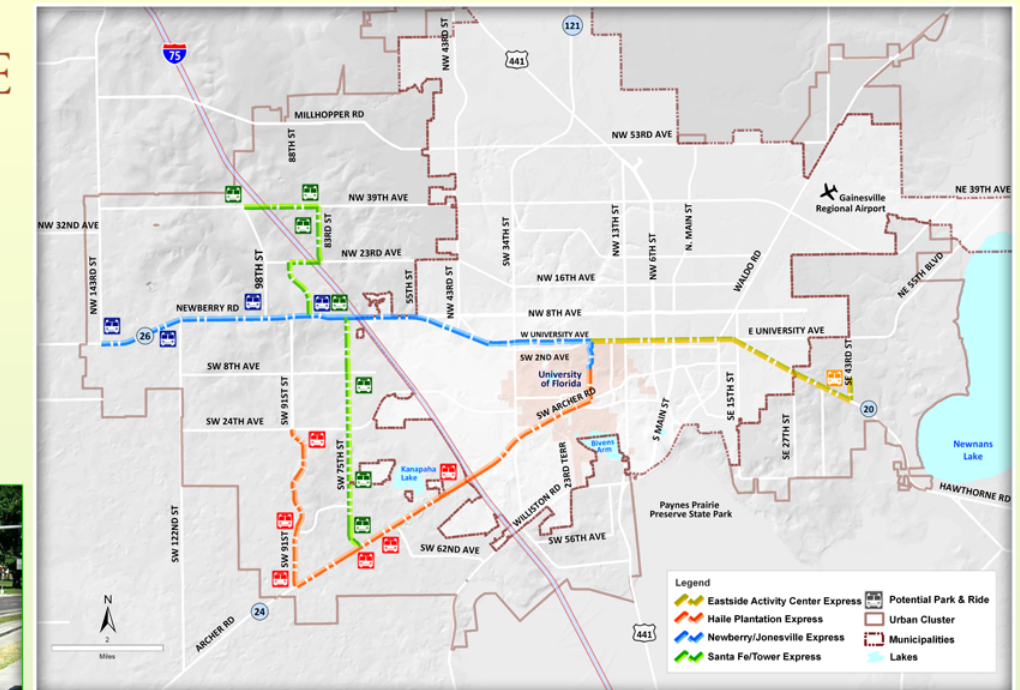
## TRANSPORTATION: GETTING FROM HERE TO THERE

### Express Transit Service

The Mobility Plan proposes Express Transit Service from the edges of the Urban Cluster to UF/Shands and Downtown Gainesville beginning in 2015. Proposed express transit routes serving commuting trips from East Gainesville, Southwest Gainesville, Jonesville & Santa Fe College



### EXPRESS TRANSIT CORRIDORS



### Traditional Neighborhood Development (TND)

The Mobility Plan encourages TNDs which allow residents to walk and bike to a village center containing a mixture of commercial, residential, office and civic uses.



### Transit Oriented Development (TOD)

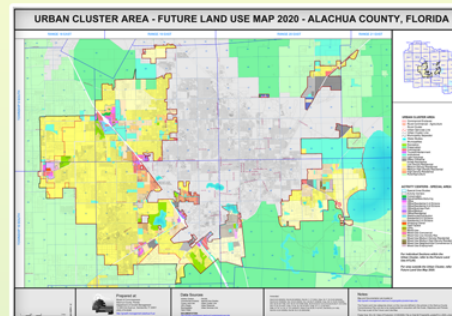
TODs are a key feature of The Mobility Plan. These developments contain a mix of uses and provide a higher density focal point for transit. They also will be the location of park and ride lots to serve residents in outlying areas. Imagine driving a short distance, parking, getting a cup of coffee, checking your email as you take transit into town, taking transit back to your vehicle, picking up groceries in the village center, and heading home for dinner.

## LAND USE:

## THE COMMUNITY OUR CHILDREN WILL INHERIT

### Urban Cluster

Alachua County identified an Urban Cluster Boundary in 1991. Since that time urban densities are only provided for inside the urban cluster boundary and inside municipality boundaries.

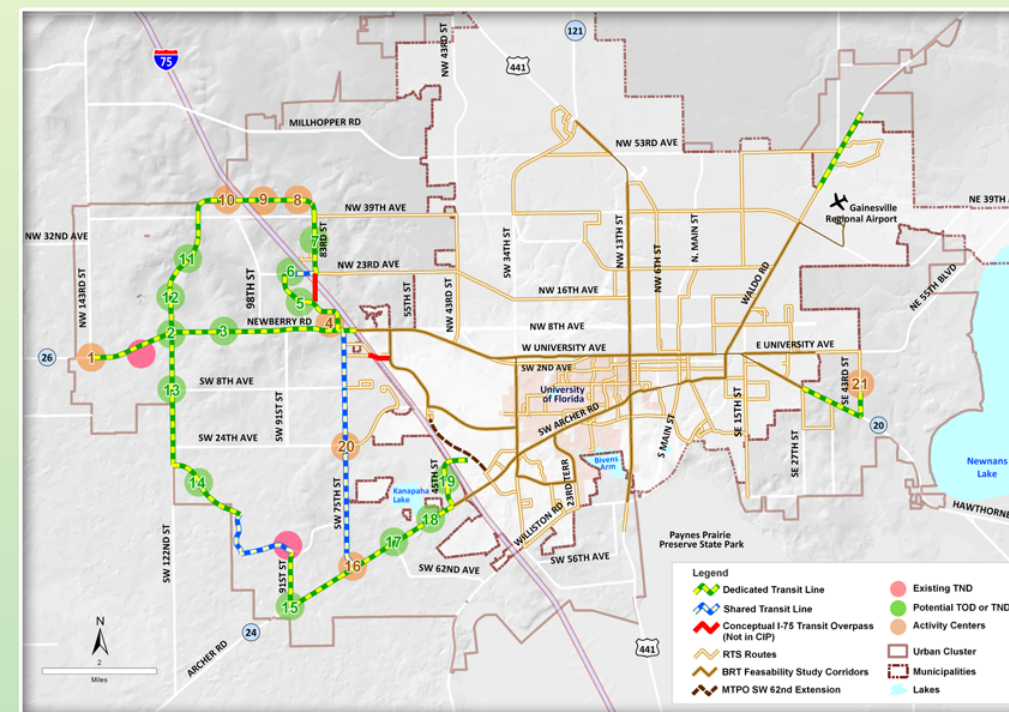


Alachua County's Future Land Use Map

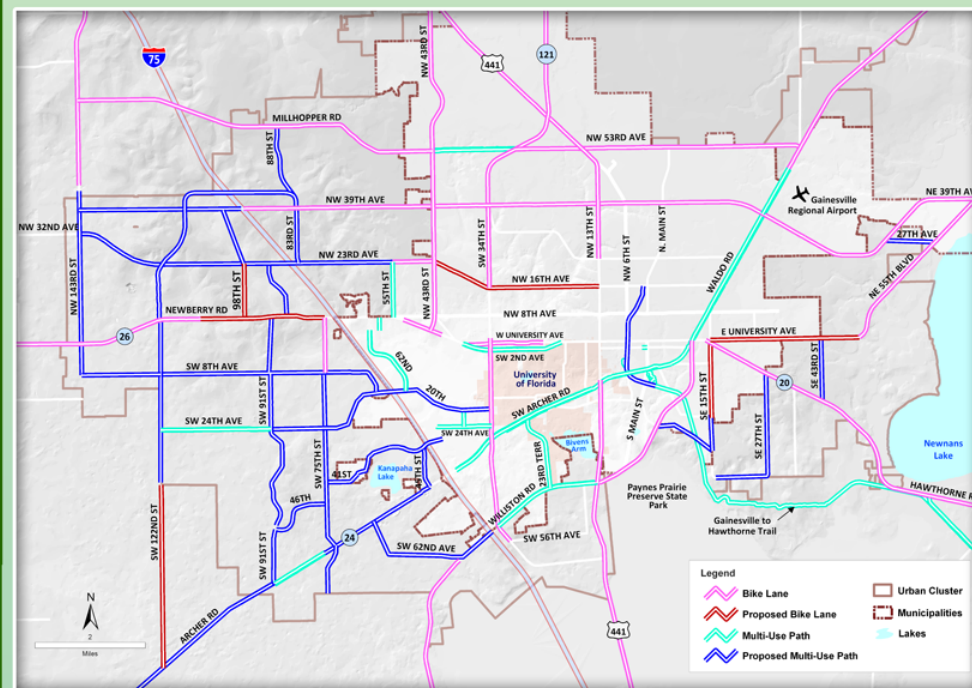


A Mixed-use Village Center

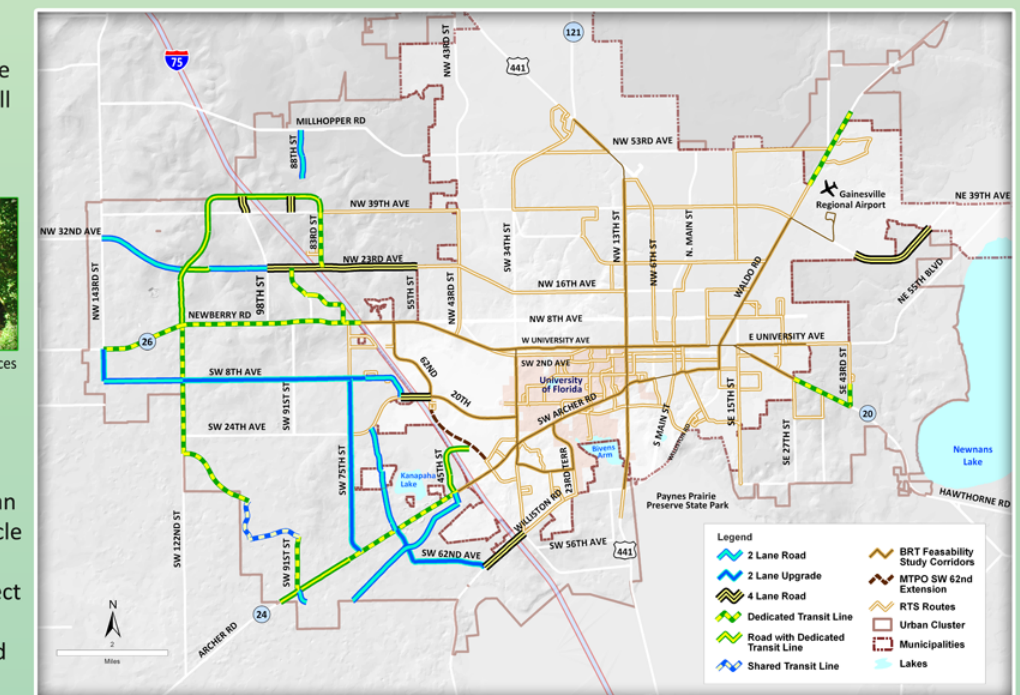
### POTENTIAL TRANSIT ORIENTED DEVELOPMENT



### EXISTING & FUTURE BICYCLE & PEDESTRIAN NETWORK



### TRANSPORTATION MOBILITY AREAS



### Interconnected Roadway Network

#### Roadway Network

The Mobility Plan proposes to continue the development of the gridded roadway network as well as addressing the bottlenecks crossing Interstate-75.



Off-road multi-use path through connected open spaces

### Bicycle and Pedestrian Connectivity

The Mobility Plan proposes a connected bicycle and pedestrian network with new on-road bicycle lanes and off-road multi-use paths. These facilities will connect existing and future residential development to TODs, TNDs and Activity Centers.

## SUSTAINABILITY: THE HOW AND WHY OF MOBILITY CHOICES

### Mobility Choices

The Mobility Plan creates more mobility options for residents, especially for young people, the elderly and people who do not own cars or prefer not to drive. The Mobility Plan provides for express transit and park and ride opportunities from outlying areas into the major regional employment and commercial hubs within the City of Gainesville.

### Mixed Use

The Mobility Plan provides for commercial, office, civic and institutional uses within walking and biking distance to residents by providing incentives for mixed-use development.

### Energy Efficiency

The Mobility Plan is consistent with the County's Energy Conservation Strategies Commissions recommendations regarding land use and transportation. The plan's focus on alternative modes of transportation and compact development patterns is key to reducing energy use, personal transportation costs and dependence on foreign-sourced fossil fuels.

### Greenhouse Gases

Peak hour transit service has the lowest greenhouse gas emissions of any motorized transportation mode. Bicycle and pedestrian modes are virtually greenhouse gas free

### Reduced Fiscal Impacts

The Mobility Plan provides a fiscally responsible bridge to the future by positioning the County to be able to reduce future infrastructure construction and maintenance costs. The Plan focuses on the existing Urban Cluster and transitions the County from chasing congestion with new roadways to funding increased transit service over time.