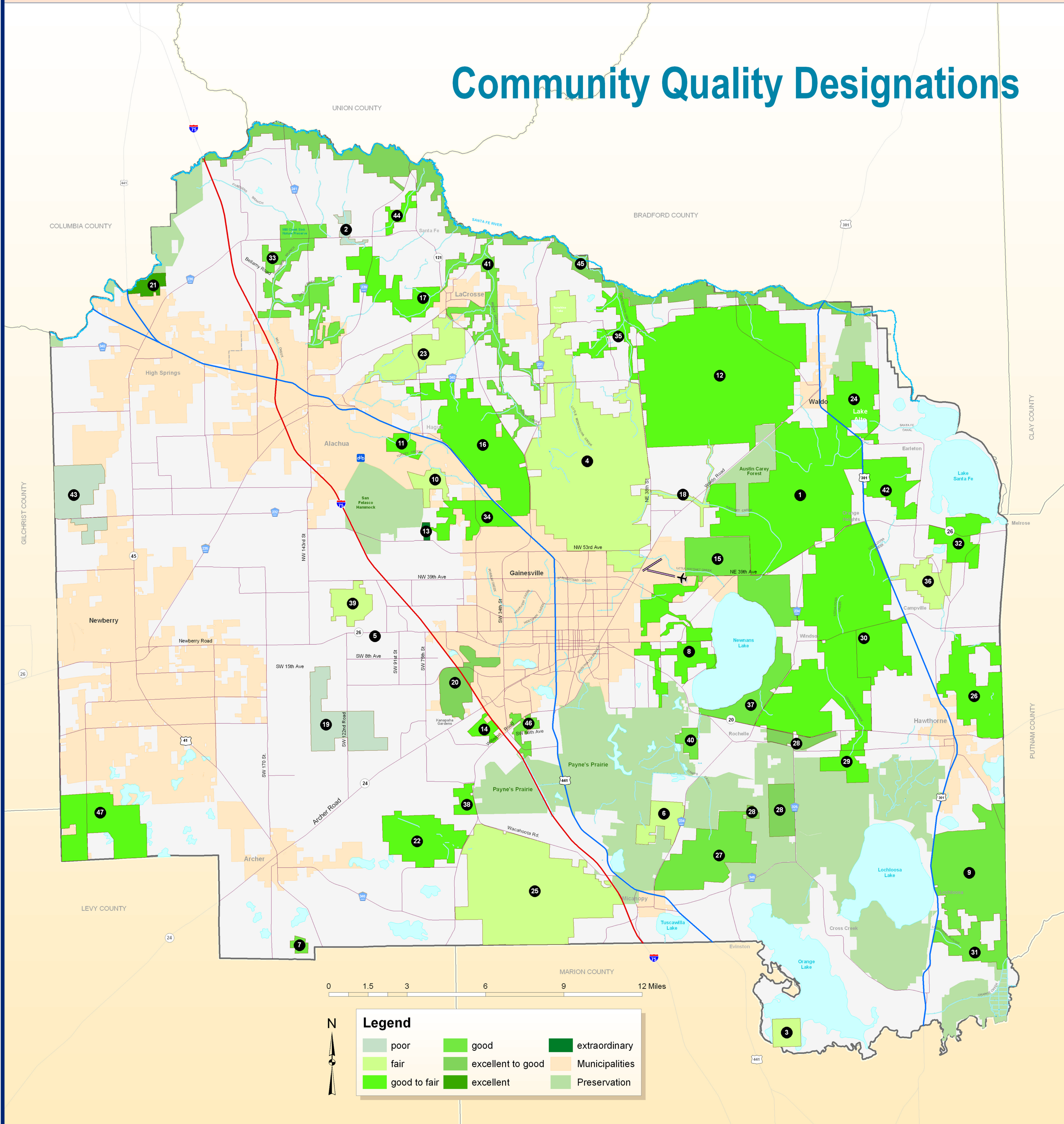


STRATEGIC ECOSYSTEMS - ALACHUA COUNTY, FLORIDA

Community Quality Designations



Introduction

A few years ago Alachua County conducted two studies to create an Ecological Inventory for the County. The first study was conducted in 1987 and the second in 1996. The studies aimed to identify, inventory, map, describe, and evaluate the most significant natural biological communities, both upland and wetland, that were in private ownership in Alachua County and to make recommendations for protecting these natural resources. The studies do not focus on the public water bodies and publicly owned lands in the County. This map captures the GIST of the analysis used.

Community Quality Designations

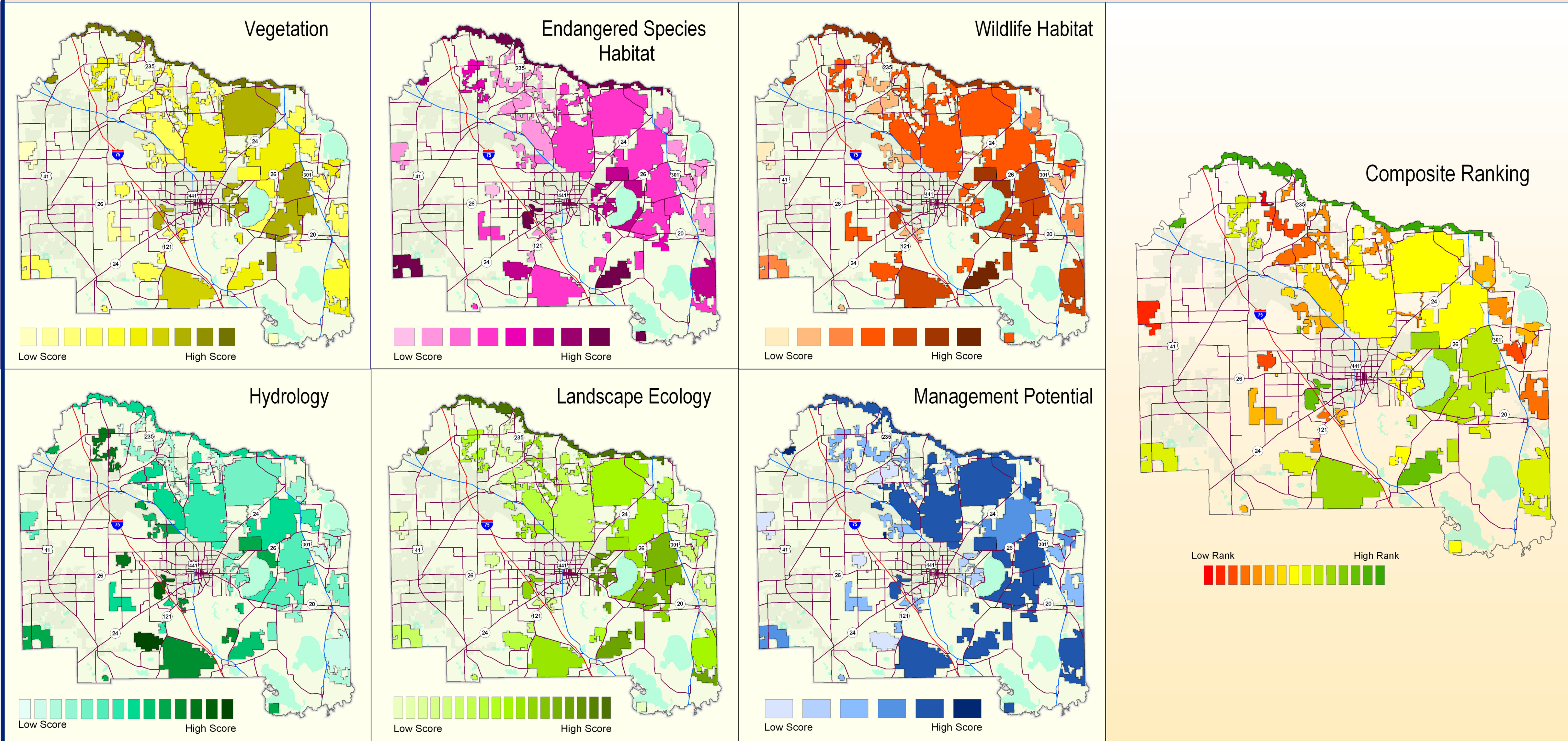
The biological communities on each site were evaluated for overall ecosystem quality. While the scope of the project precluded certain statistical analysis, the approach taken combined limited site visits and judgment based on other sources of information. Some decisions were made on the basis of aerial photography combined with a judgment based on the general condition of such ecosystems throughout Alachua County. Most communities were visited in the field at least once. Evaluations of quality are based primarily on the biodiversity and functional integrity of the community as reported in the field data sheets or by the evaluators.

SITE NUMBER	SITE NAME	PARAMETER RANK	SUB-PARAMETER RANK
1	AUSTIN CARY FLATWOODS	15	15
2	BEECH VALLEY	47	47
3	BIRD ISLAND	18	28
4	BUCK BAY FLATWOODS	18	20
5	BUZZARDS ROOST	24	20
6	CHACALUA POND	18	15
7	DOMINO HAMMOCK	27	26
8	EAST SIDE GREENWAY	18	14
9	EAST LOCHLOOSA FOREST	12	26
10	EAST SAN FELASCO HAMMOCK	33	28
11	NORTH SAN FELASCO HAMMOCK	24	23
12	NORTHEAST FLATWOODS	18	15
13	FOX POND	5	5
14	FRED BEAR HAMMOCK	40	39
15	GUM ROOT SWAMP	6	8
16	HAGUE FLATWOODS	24	23
17	HASAN FLATWOODS	43	44
18	HATCHETT CREEK	33	31
19	HICKORY SINK	27	36
20	HOGTOWN PRAIRIE	3	3
21	HORNBY SPRINGS	2	2
22	KANAPAH PRAIRIE	12	9
23	SOUTH LACROSSE FOREST	40	39
24	LAKE ALTO SWAMP	27	31
25	BARR HAMMOCK - LEVY LAKE	6	6
26	LITTLE ORANGE CREEK	40	39
27	LOCHLOOSA FOREST WEST	3	4
28	LOCHLOOSA FOREST ADDITIONS	8	9
29	LOCHLOOSA CREEK	12	20
30	LOCHLOOSA CREEK FLATWOODS	8	9
31	LOCHLOOSA SLOUGH	12	15
32	SOUTH MELROSE FLATWOODS	27	31
33	MILL CREEK	12	9
34	MILLHOPPER FLATWOODS	27	23
35	MONTECOA CREEK	33	39
36	MORAN'S PRAIRIE	43	45
37	EAST SIDE NEWNANS LAKE	6	13
38	PAYNES PRAIRIE WEST	33	31
39	PINE HILL FOREST	43	36
40	PRAIRIE CREEK	8	6
41	ROCKY CREEK	33	31
42	SALUDA SWAMP	33	36
43	BUDA SANDHILLS	46	46
44	SANTA FE CREEK	33	43
45	SANTA FE RIVER	1	1
46	SERENOLA FOREST	27	28
47	WATERMELON POND	12	15

Site Ranking

A numerical scoring and ranking system was developed to determine the relative importance of the sites based on their ecological, hydrological, and management characteristics. Each site was evaluated and ranked by three project scientists for six ecological, hydrological, and management parameters. In some cases, a parameter was subdivided into subparameters to better define the relationship. Definitions were developed for each parameter and subparameter. Based on these definitions, a score of 1 (low) to 5 (high) was assigned by consensus to each site based on the characteristics it exhibited. These scores were summed to obtain a total site score. Sites were ranked by comparing their total scores.

Site Rankings for each Criteria



Prepared by:
Alachua County
Department of Growth Management
10 SW 2nd Avenue, Gainesville, FL 32601
(352) 374-5249
<http://growth-management.alachuacounty.us/>

Notes:

Poster Size: 36 x 48
Date of Production: 02/03/2011
File on Disk: M:\Projects\Strategic_Ecosystems\Strategic_Ecosystems_Ratings.mxd
Data Sources:
KBR\Golden Associates, 1996. "Ecological Inventory of Alachua County, Florida."
Report prepared for the Alachua County Department of Growth Management by
KBR\Golden Associates.