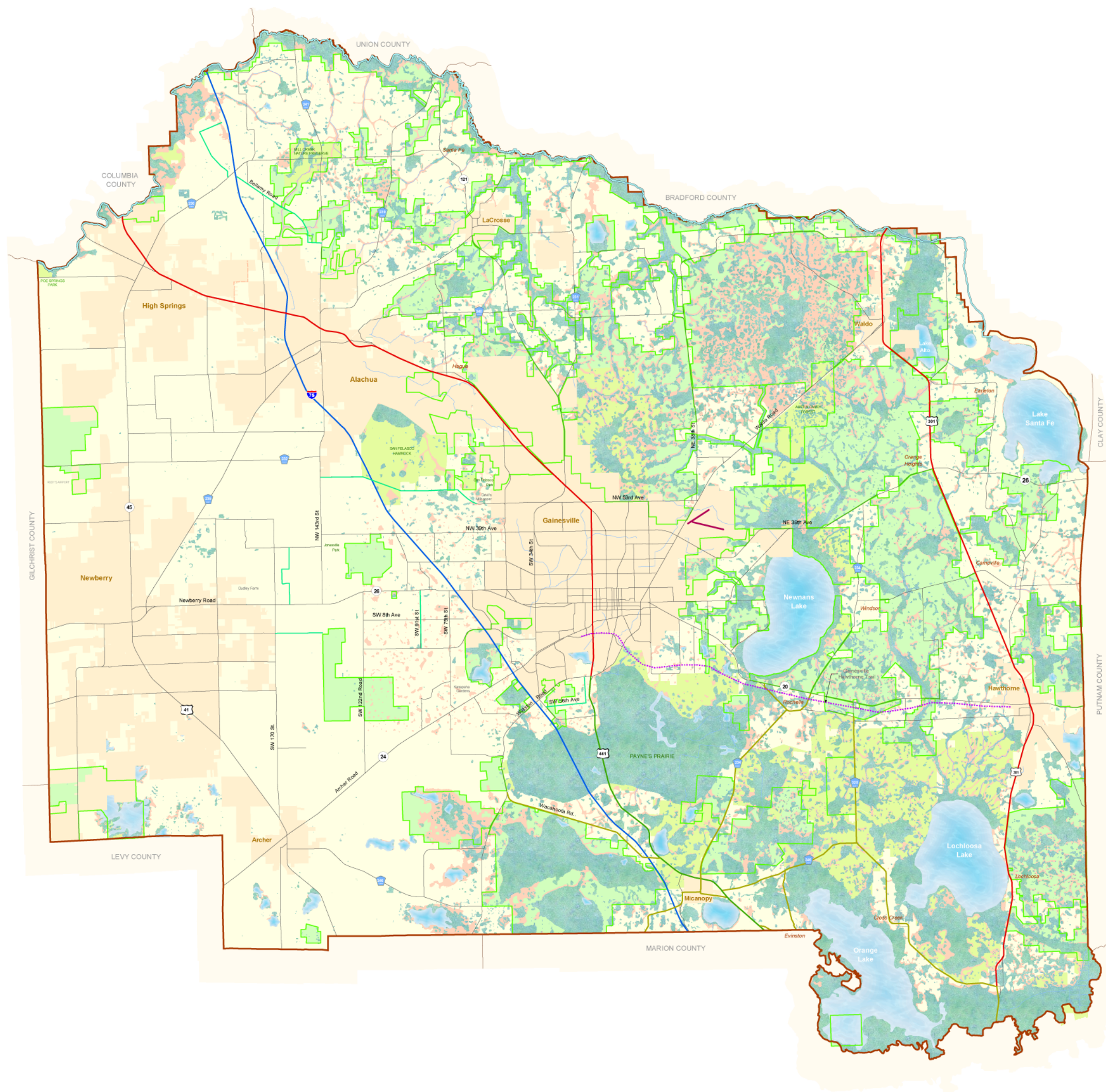


STRATEGIC LANDS - ALACHUA COUNTY, FLORIDA



Legend

- River
- Stream
- Gainesville Regional Airport
- Alachua County Scenic Road
- Scenic Highway 441
- Scenic Highway 441: Spur and Loop Road
- Gainesville/Hawthorne Trail
- Water Bodies
- Wetlands
- FEMA 2006 Floodplains
- Municipalities
- Preservation Areas
- Strategic Ecosystems

Data Sources

- Wetland Portions of the following datasets:
- 1995 St John's River Water Management District Land Use
 - 1995 Suwannee River Water Management District Land Use
 - 1995 Southwest Florida Water Management District Land Use
 - NWI-National Wetlands Inventory
 - Hydric soils subset of the County Soil Survey maps published by the United States Department of Agriculture
 - USDA's Natural Resources Conservation Service (NRCS) as the Soil Service Geographic (SSURGO) data set
 - Hydrological features from USGS 1:24000 scale Digital Line Graphs (7.5' quadrangles)

Preservation Areas:

- Preservation portion of the Alachua County Future Land Use map.

Strategic Ecosystems:

- Study prepared for Alachua County by KBN/Golder Associates.
- Study entitled "Ecological Inventory of Alachua County, Florida."

Flood Plains

- Federal Emergency Management Agency (FEMA) 2006

DEFINITION FOR FLOOD PLAINS:

"Special Flood Hazard Areas" (SFHA) refer to areas prone to flooding according to Flood Insurance Rate Maps (FIRMs) produced by the Federal Emergency Management Agency (FEMA), with an effective date of June 16, 2006. Areas outside of SFHAs include at least one of the following: areas classified as 500-year flooding; an area inundated by 100-year flooding with average depths of less than 1 foot or with drainage areas less than 1 square mile; an area protected by levees from 100-year flooding; or an area that is determined to be outside the 100- and 500-year floodplains

Notes:

Map and Documentation are located at:
<http://growth-management.alachua.fl.us/gis/gallery/postermaps.php>

Poster Size: 30 x 36
Date of Production: 12/8/2006
File on Disk: M:\Projects\Poster_maps\Strategic_Lands.mxd



Prepared by:
Board of Commissioners
Alachua County, Florida
Department of Growth Management
10 SW 2nd Avenue, Gainesville, FL 32601
(352) 374-5249
<http://growth-management.alachua.fl.us/>