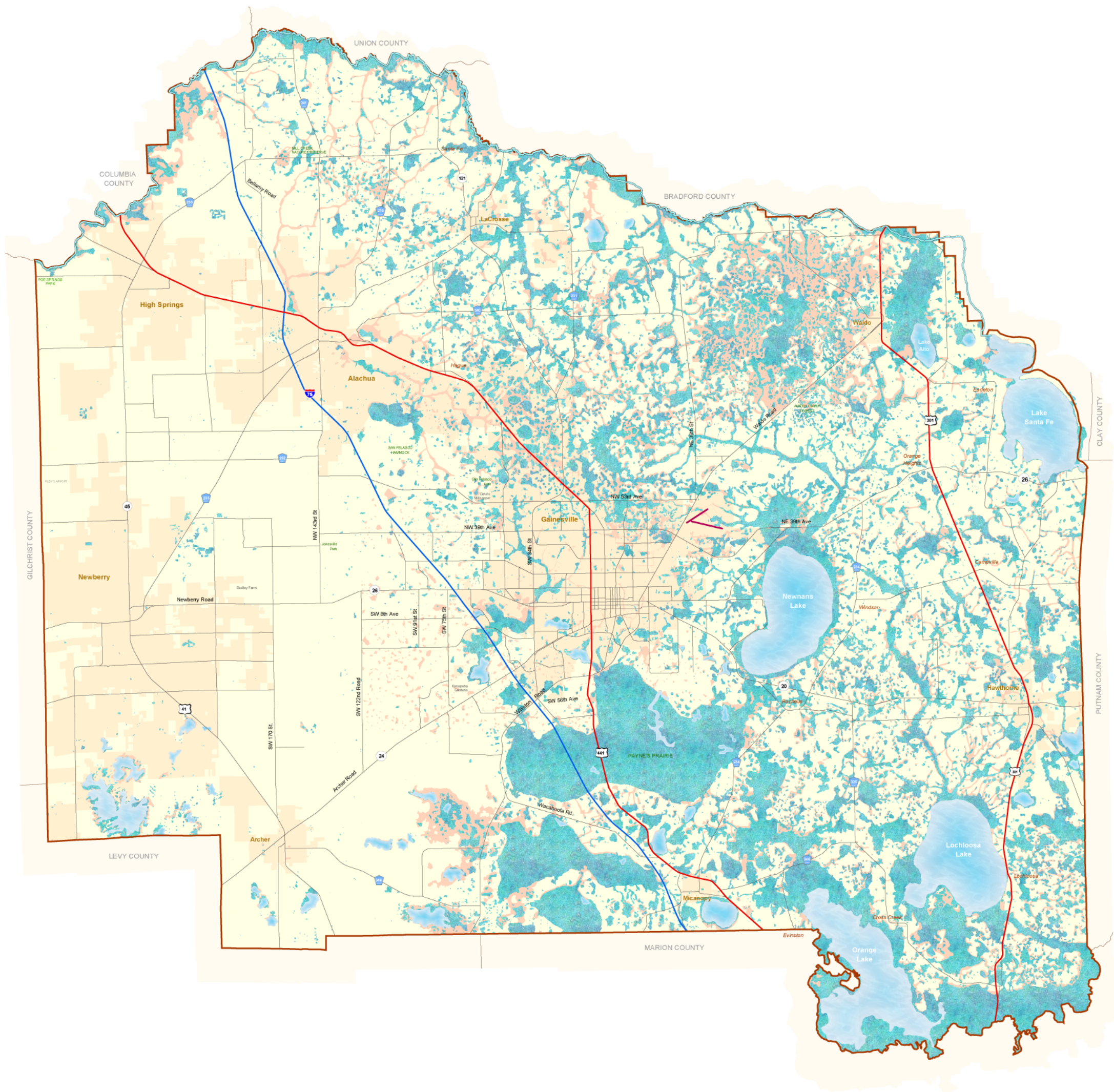
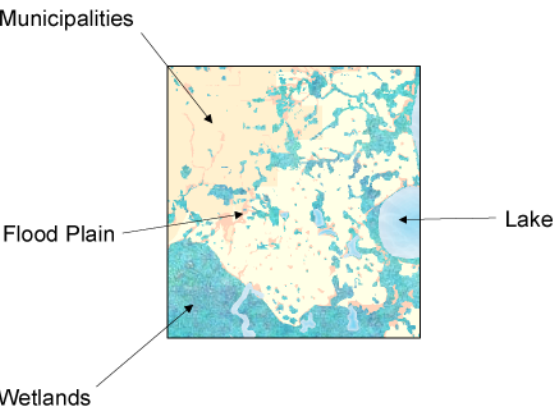


# WETLANDS AND FLOODPLAINS - ALACHUA COUNTY, FLORIDA



## LEGEND



## Countywide Distribution by Acreage and Percentage

TYPE	ACREAGE	PERCENTAGE
Water Bodies	28,620 acres	5.0%
Water Bodies & Wetlands	155,802 acres	26.0%
Water Bodies, Wetlands & Floodplains	198,677 acres	33.5%

## Data Sources

Wetland Portions of the following datasets:

- 1995 St John's River Water Management District Land Use.
- 1995 Suwannee River Water Management District Land Use.
- 1995 Southwest Florida Water Management District Land Use.
- NWI-National Wetlands Inventory.
- Hydric soils subset of the County Soil Survey maps published by the United States Department of Agriculture.
- (USDA) Natural Resources Conservation Service (NRCS) as the Soil Service Geographic (SSURGO) data set.
- Hydrological features from USGS 1:24000 scale Digital Line Graphs (7.5' quadrangles).

Flood Plains  
• Federal Emergency Management Agency (FEMA) 2006

## DEFINITION FOR FLOOD PLAINS:

"Special Flood Hazard Areas" (SFHA) refer to areas prone to flooding according to Flood Insurance Rate Maps (FIRMs) produced by the Federal Emergency Management Agency (FEMA), with an effective date of June 16, 2006. Areas outside of SFHAs include at least one of the following: areas classified as 500-year flooding; an area inundated by 100-year flooding with average depths of less than 1 foot or with drainage areas less than 1 square mile; an area protected by levees from 100-year flooding; or an area that is determined to be outside the 100- and 500-year floodplains

## Notes:

Map and Documentation are located at:  
<http://growth-management.alachua.fl.us/gis/gallery/postermaps.php>  
This map shows generalized indicators of natural resources. Development requires on-site verification of natural resources and corresponding protection measures.  
This map is part of the Future Land Use Map (FLUM) Series. The FLUM Series includes maps such as: the County Wide Map, the Urban Cluster and Surrounding Area Map, the Wetlands and Floodplains Map, the Murphree Well Field Management Zones Map  
Poster Size: 30 x 36  
Date of Production: 02/04/2008  
File on Disk: M:\Projects\Poster\_maps\Wetlands\_and\_Floodplains.mxd



Prepared at:  
Board of Commissioners  
Alachua County, Florida  
Department of Growth Management  
10 SW 2nd Avenue, Gainesville, FL 32601  
(352) 374-5249  
<http://growth-management.alachua.fl.us/>