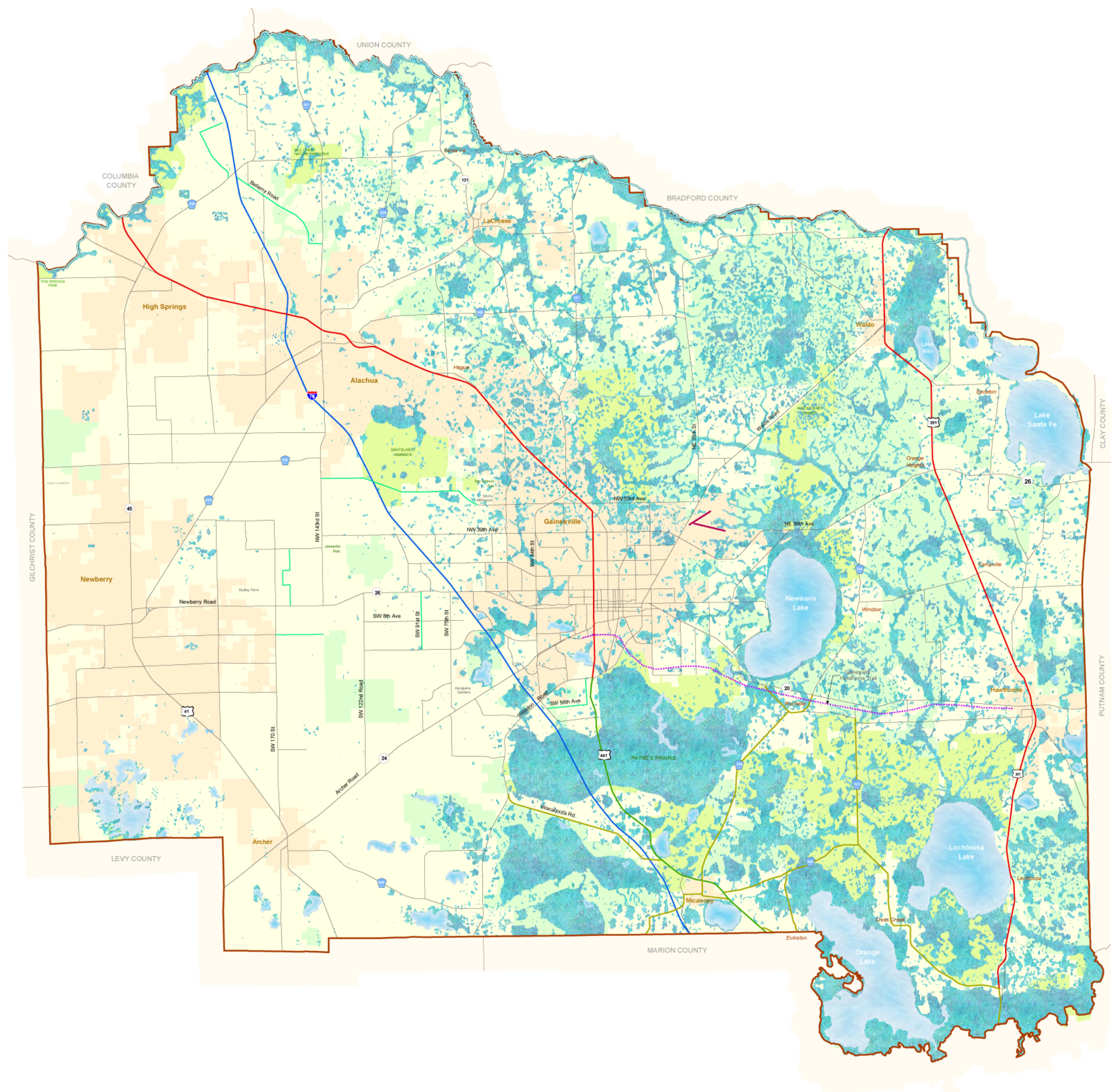


STRATEGIC ECOSYSTEMS AND WETLANDS - ALACHUA COUNTY, FLORIDA



Legend

- River
- Gainesville Regional Airport
- Alachua County Scenic Road
- Scenic Highway 441
- Scenic Highway 441: Spur and Loop Road
- Gainesville/Hawthorne Trail
- Water Bodies
- Wetlands
- Municipalities
- Preservation Areas
- Strategic Ecosystems



Prepared at:
Board of Commissioners
Alachua County, Florida
Department of Growth Management
10 SW 2nd Avenue, Gainesville, FL 32601
(352) 374-5249
<http://growth-management.alachua.fl.us/>

Data Sources

Wetland Portions of the following datasets:
• 1995 St John's River Water Management District Land Use.
• 1995 Suwannee River Water Management District Land Use.
• 1995 Southwest Florida Water Management District Land Use.
• NWI-National Wetlands Inventory.
• Hydric soils subset of the County Soil Survey maps published by the United States Department of Agriculture (USDA) Natural Resources Conservation Service (NRCS) as the Soil Service Geographic (SSURGO) data set.
• Hydrological features from USGS 1:24000 scale Digital Line Graphs (7.5' quadrangles).

Preservation Areas:
• Preservation portion of the Alachua County Future Land Use map.

Strategic Ecosystems:
• Study prepared for Alachua County by KBN/Golder Associates, Study entitled "Ecological Inventory of Alachua County, Florida."

Notes:

Map and Documentation are located at:
<http://growth-management.alachua.fl.us/gis/gallery/postermaps.php>
Poster Size: 30 x 36
Date of Production: 12/8/2006
File on Disk: M:\Projects\Poster_maps\Strategic_Ecosystems_Wetlands.mxd